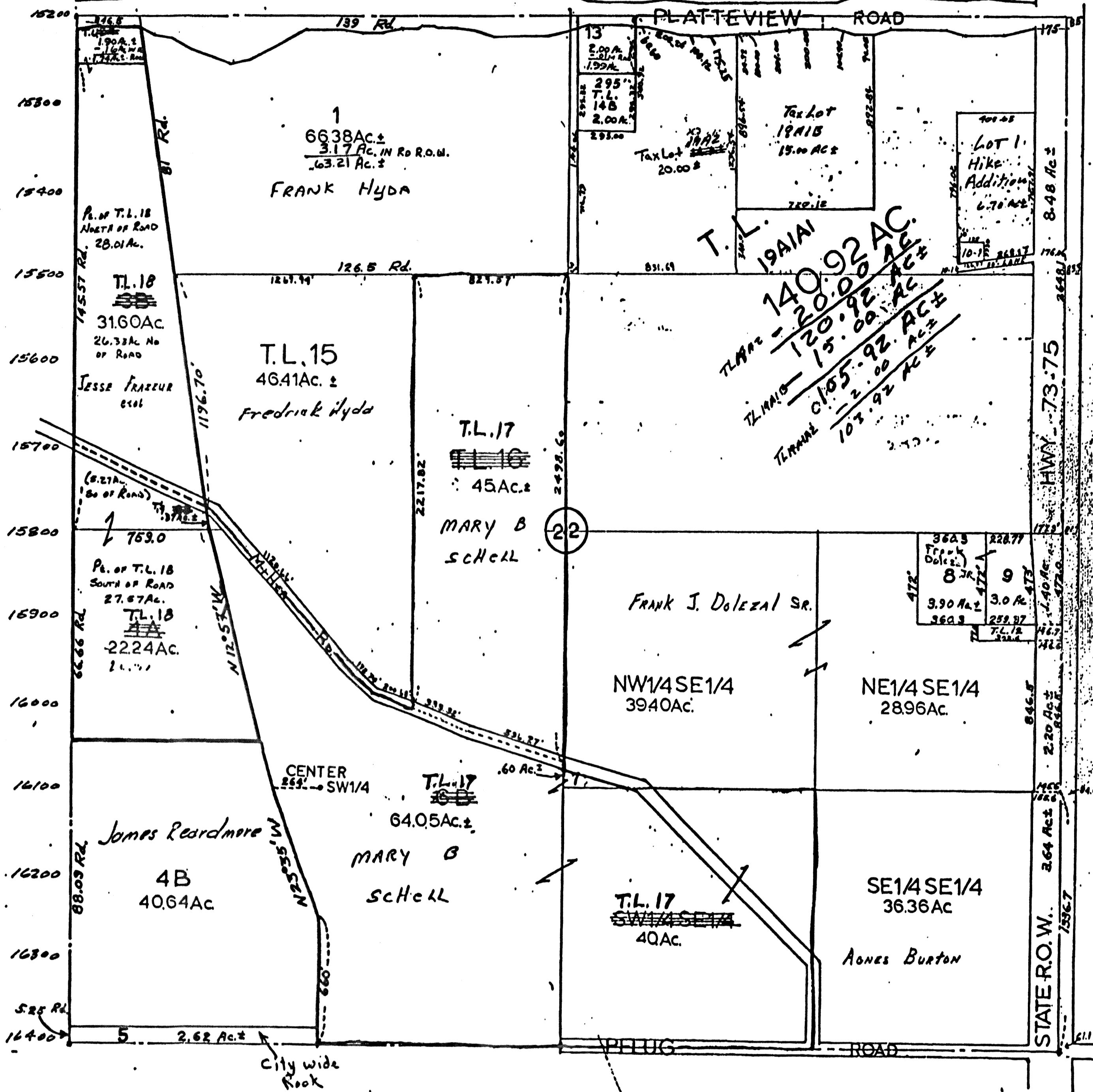


SEC.22-T13N-R13E  
SCALE: 1" = 400'

1839-42



SARPY COUNTY SURVEYOR'S OFFICE  
OCTOBER - 1958

TAX LOT 17: TL'S: 2B, 6B, 7, 16, &  
SW1/4 SE1/4 150.02 AC ±  
TAX LOT 18: TL'S: 3A, 3B, 4A. 55.58 AC ±  
TAX LOT 19: TL'S: 11, 14, S1/2 NE 1/4 142.92 AC ±

REVISED - JANUARY - 1960.

REVISED  
3-14-77  
4-8-80  
2-18-82  
9-11-87  
02-19-00 Tax Lot Revisions