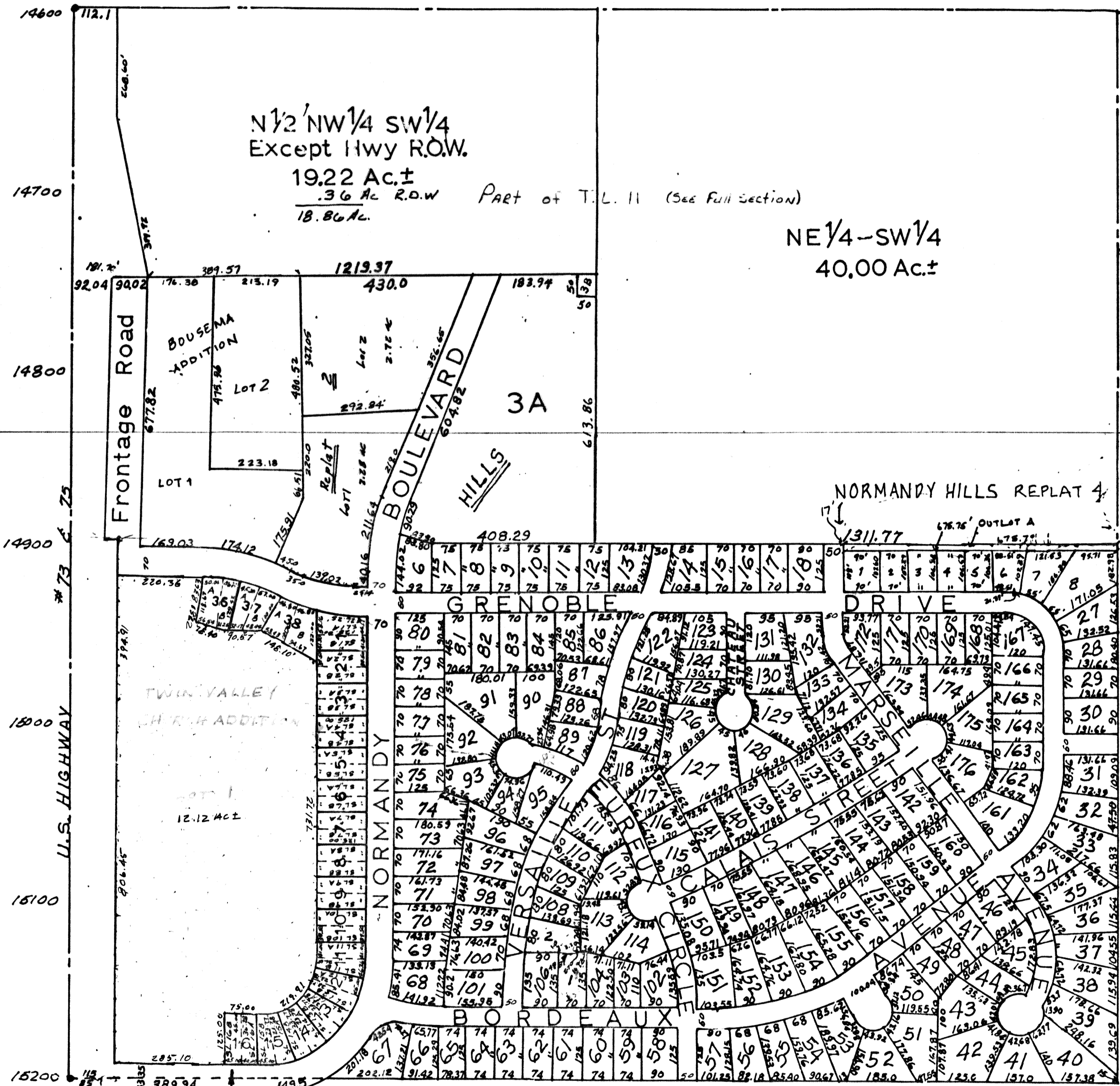


SW 1/4 SEC. 14-T13N-R13E.
SCALE - 1" = 200'

1814



FRENCH VILLAGE
Replat of Lot 5
LOTS 1 THRU 16 INCLUSIVE

FRENCH VILLAGE
Replat of Lot 4
LOTS 17 THRU 53 INCLUSIVE

SARPY COUNTY SURVEYOR'S OFFICE
NOVEMBER - 1972

NORMANDY Hills
Replat III Replat & Lot 44
LOTS 105 & 107

- REVISED
- 11-7-72
 - 3-15-77
 - 7-1-85
 - 5-29-87
 - 8-17-89
 - 3-27-95
 - 5-26-95-Plat
 - 8-21-95 Replat III
 - 10-31-95 Row
 - Lot 39
 - 12-27-00 PLAT
 - 03-05-03 Plat

