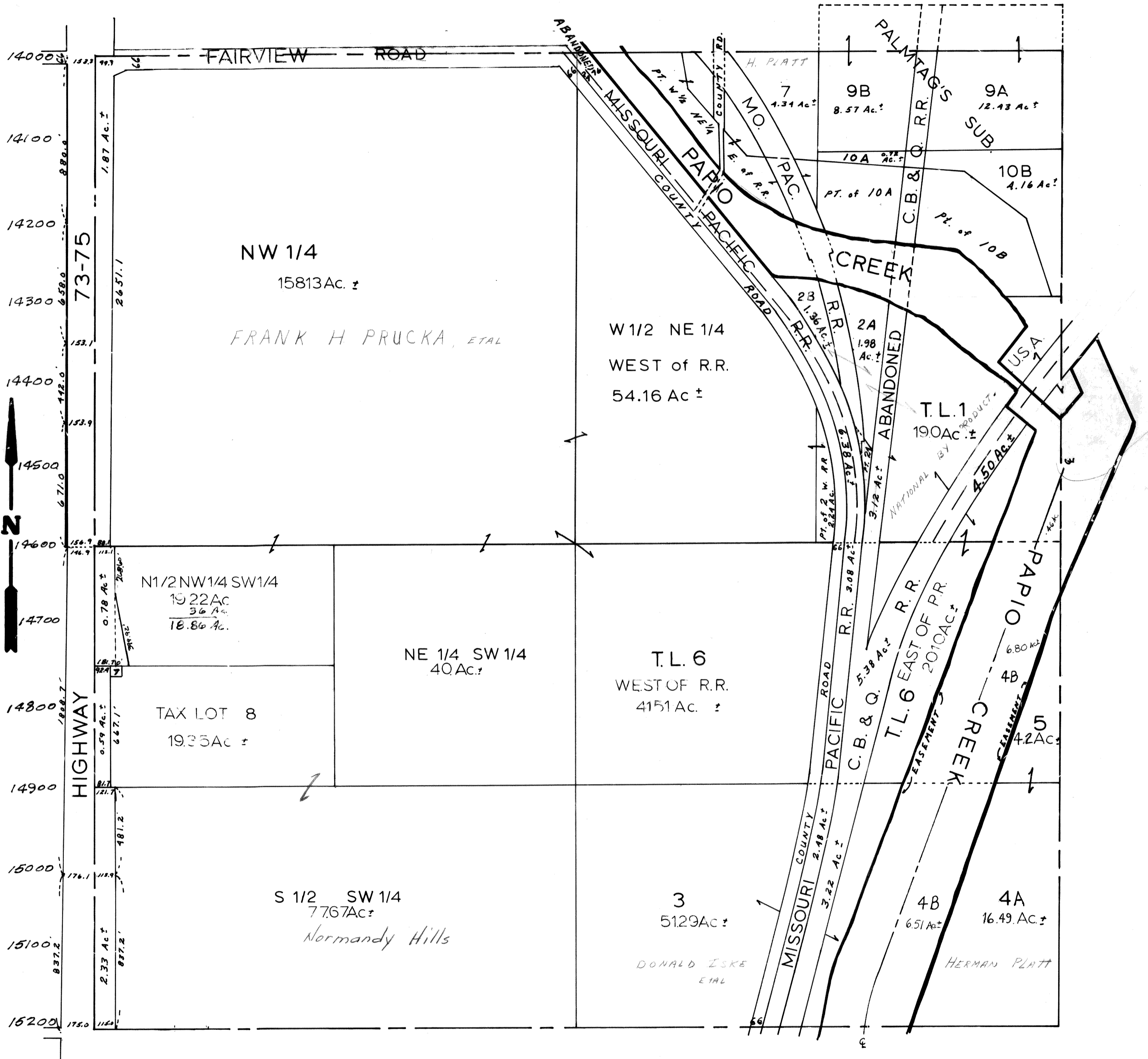


SEC 14-T13N-R13E

SCALE: 1" = 400'

1811-14



TAX LOT 11: T.L.'S 2, & W1/2 NE1/4, ALL W.OF R.R., NW1/4 214.53 AC.±

TAX LOT 12: T.L. 6 W.OF R.R. NE1/4 SW1/4 N1/2 NW1/4 SW1/4 100.73 AC.±
100.37

SARPY COUNTY SURVEYOR'S OFFICE

SEPTEMBER 1968

REVISED
3-15-77
8-17-89