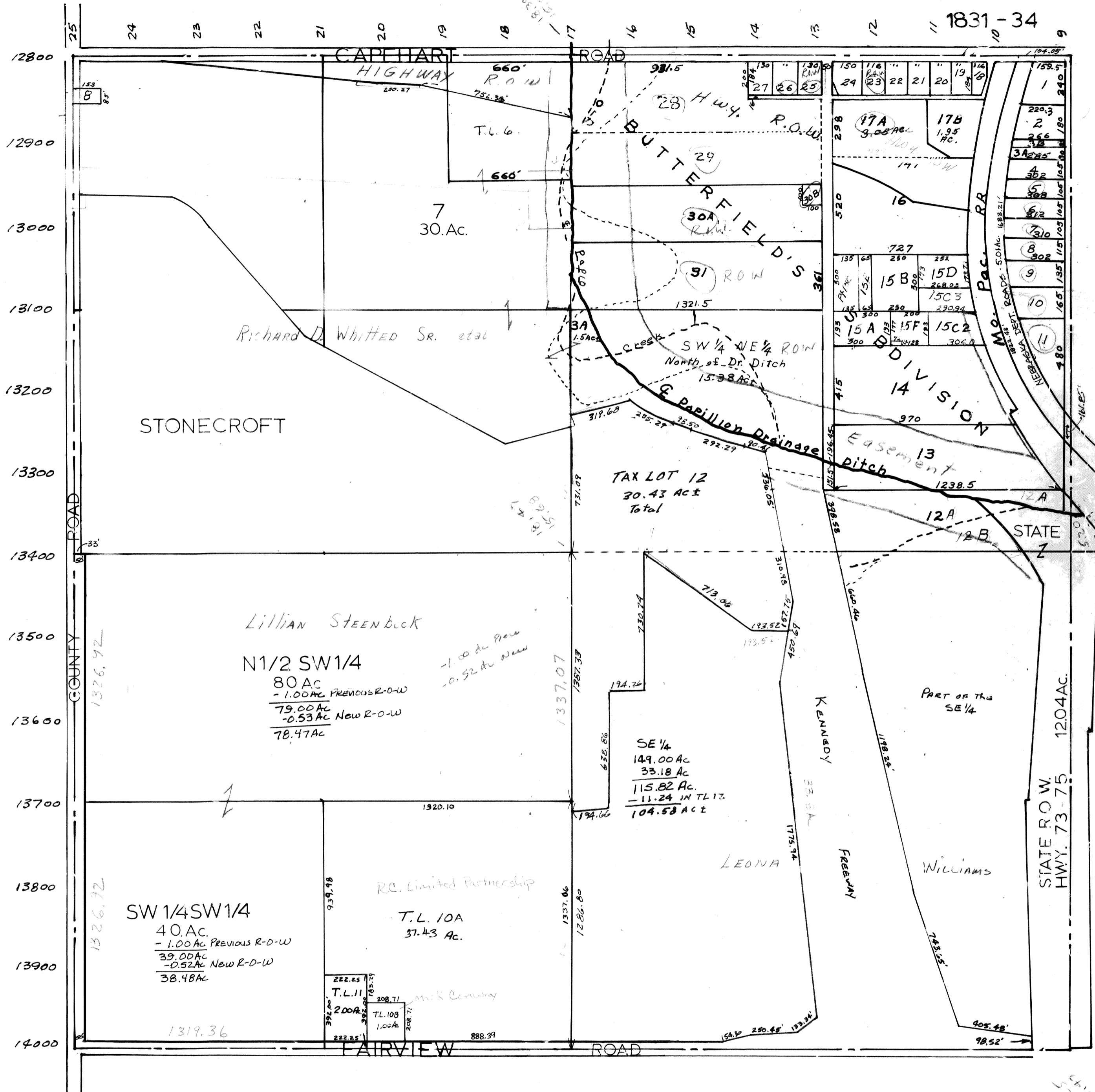


SEC.10 T13N R13E  
 scale: 1" = 400'



SARPY COUNTY SURVEYOR'S OFFICE  
 MARCH 1959

- REVISED
- 3-15-77
  - 6-9-77
  - 10-1-82
  - 8-17-89
  - 5-14-90
  - 12-27-90
  - 7-31-92
  - 9-23-93