

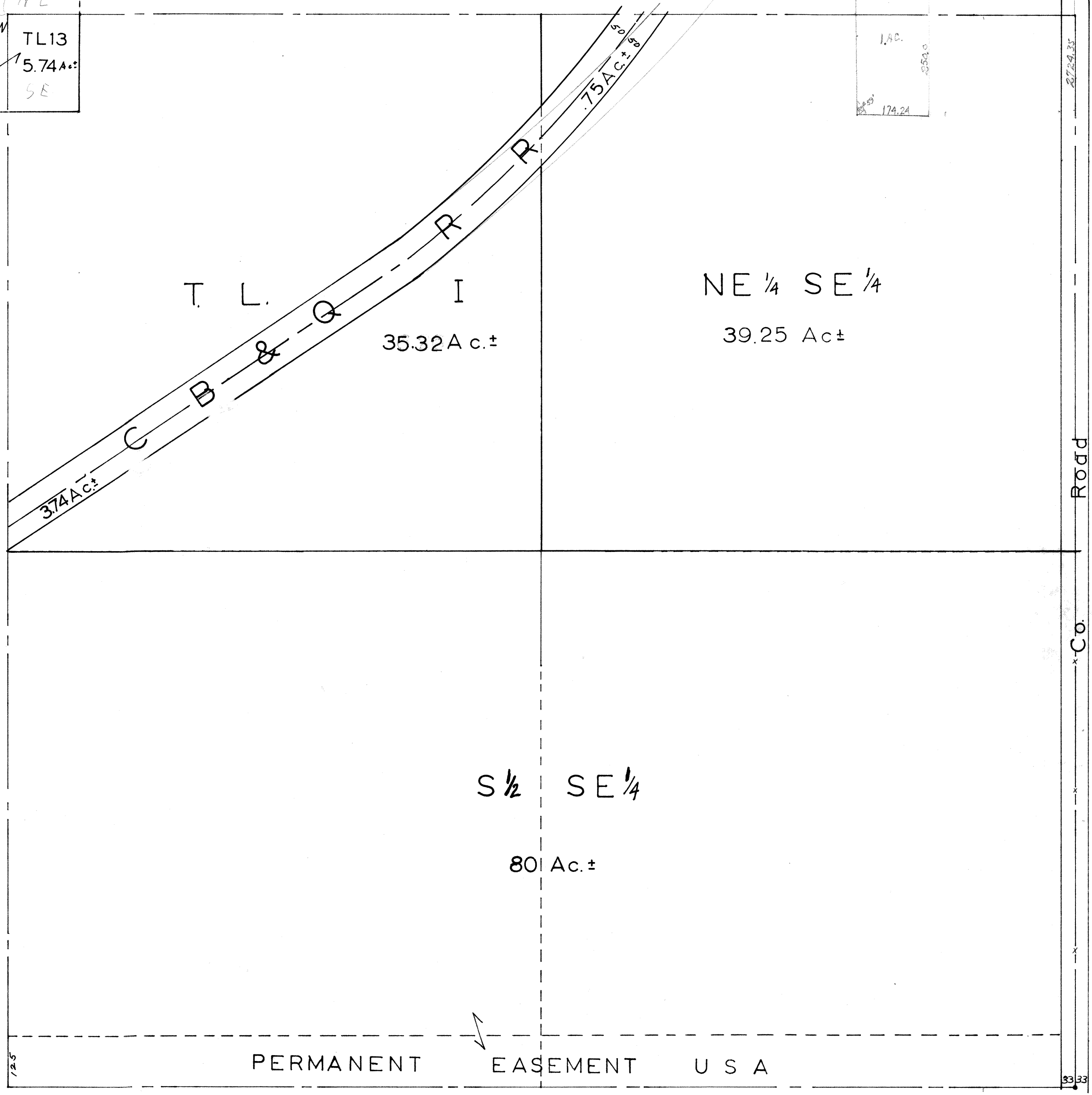
SE 1/4 SEC1-T13N-R13E

1" = 200'

SHT
4

NW	NE
NOW IN SUHL'S ACRES	
TL13	
5.74Ac±	
SW	SE

174.24	505.75	538.75
1.9C.		
174.24	505.75	538.75



OFFICIAL PLAT
 SARPY COUNTY SURVEYOR'S OFFICE
 MARCH 1960
 F. I. W. - N. P. W.