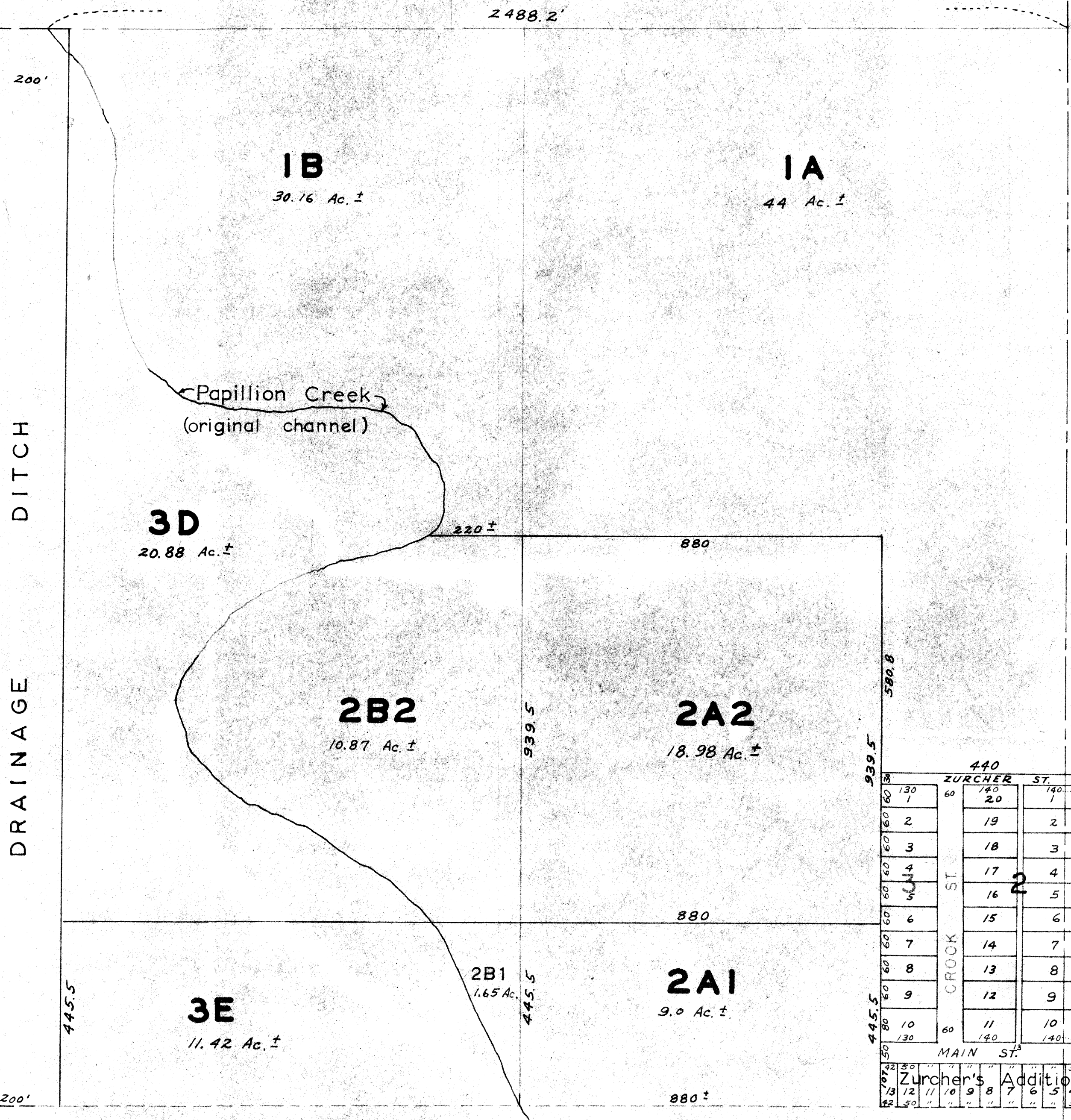
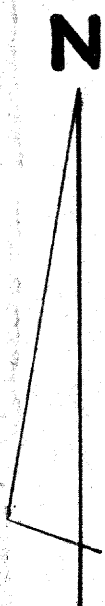


NE 1/4 SEC 3 T13N R13E

1" = 200'



440		ZURCHER ST.	
130	60	140	140
1	60	20	1
2	60	19	2
3	60	18	3
4	60	17	4
5	60	16	5
6	60	15	6
7	60	14	7
8	60	13	8
9	60	12	9
10	60	11	10
130	60	140	140
MAIN ST.		ZURCHER'S SUB.	
102	50	"	"
13	12	11	10
42	50	"	"

OFFICIAL PLAT
 SARPY COUNTY SURVEYOR'S OFFICE
 FEBRUARY 1960
 F.I.W. - N.P.W.