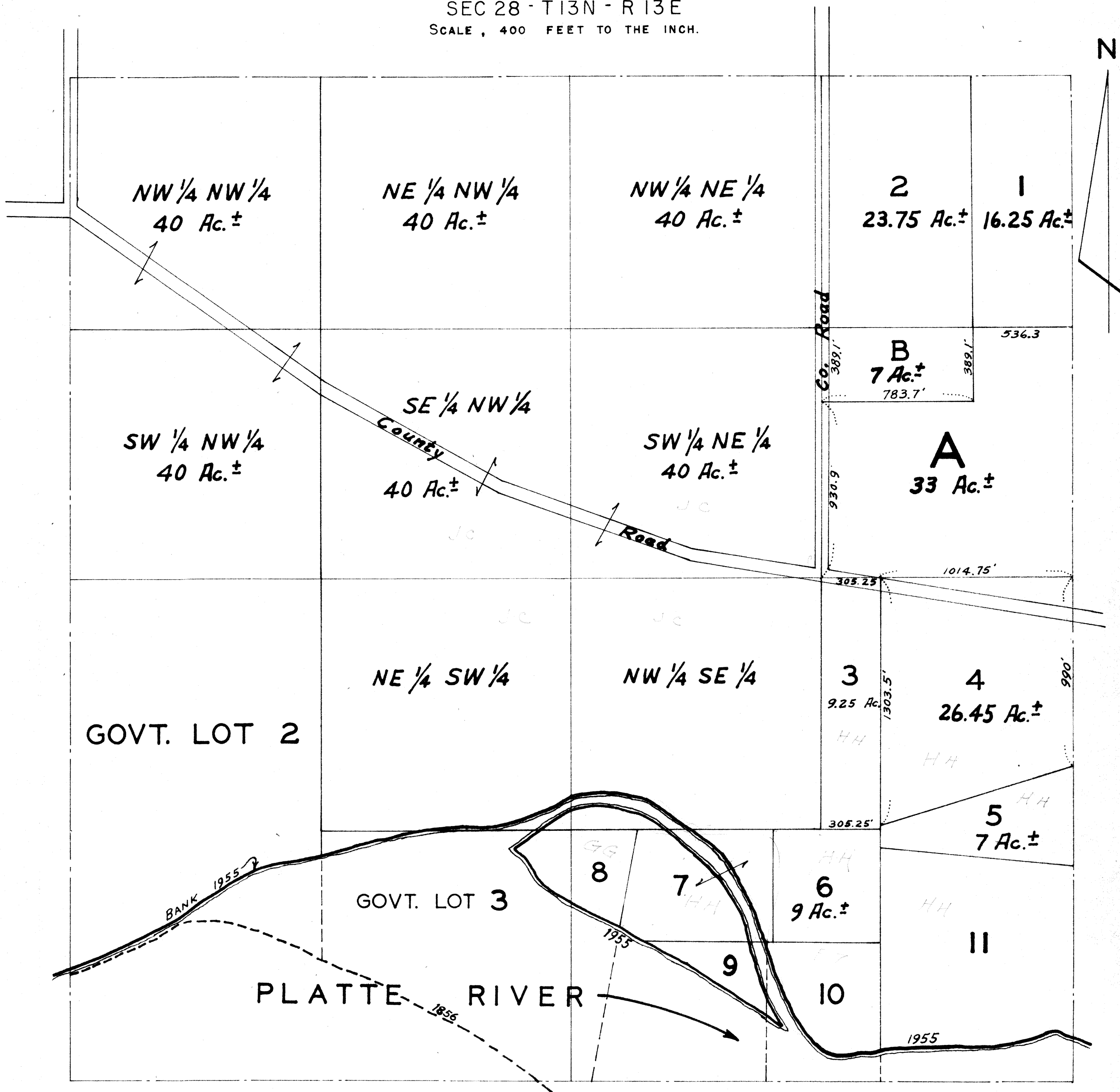


SEC 28 - T13N - R 13E
 SCALE, 400 FEET TO THE INCH.



THE DESCRIPTIONS OF TAX LOTS 3 TO 11 AS GIVEN IN THE VARIOUS FIELDS ARE SO CONFLICTING AND AMBIGUOUS THAT IT IS IMPOSSIBLE TO GIVE THE AREAS OR BOUNDARIES OF THESE LOTS WITH ANY DEGREE OF CERTAINTY.

SEE TAX LOT RECORD BOOK VOL. 2--PAGES 106 & 109.

OFFICIAL PLAT
 SARPY COUNTY SURVEYOR'S OFFICE
 JULY, 1958
 F.I.W. - N.P.W.