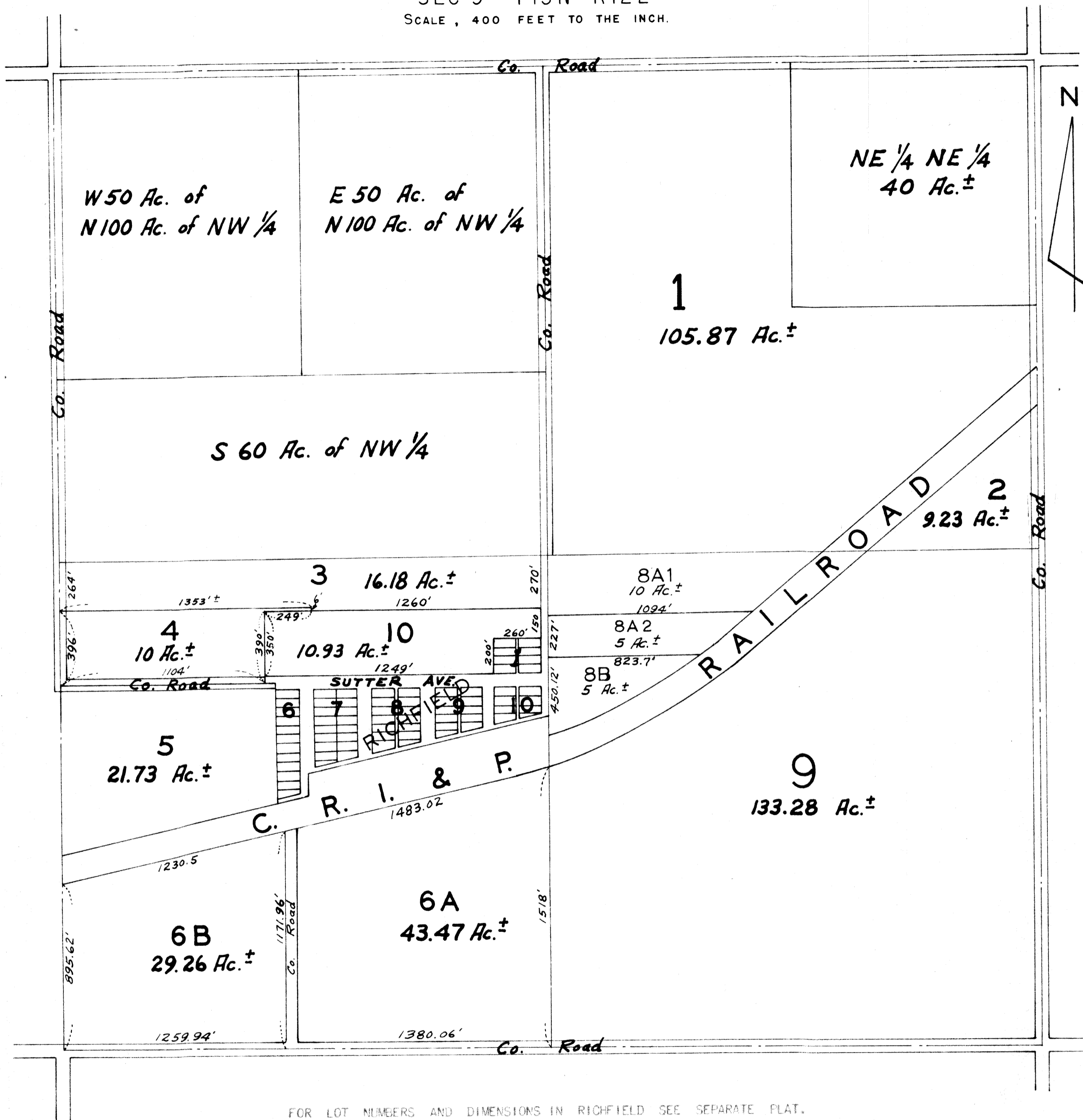


SEC 9 - T13N - R12E
SCALE, 400 FEET TO THE INCH.



FOR LOT NUMBERS AND DIMENSIONS IN RICHFIELD SEE SEPARATE PLAT.

OFFICIAL PLAT
SARPY COUNTY SURVEYOR'S OFFICE
JULY, 1958
F.I.W. - N.P.W.