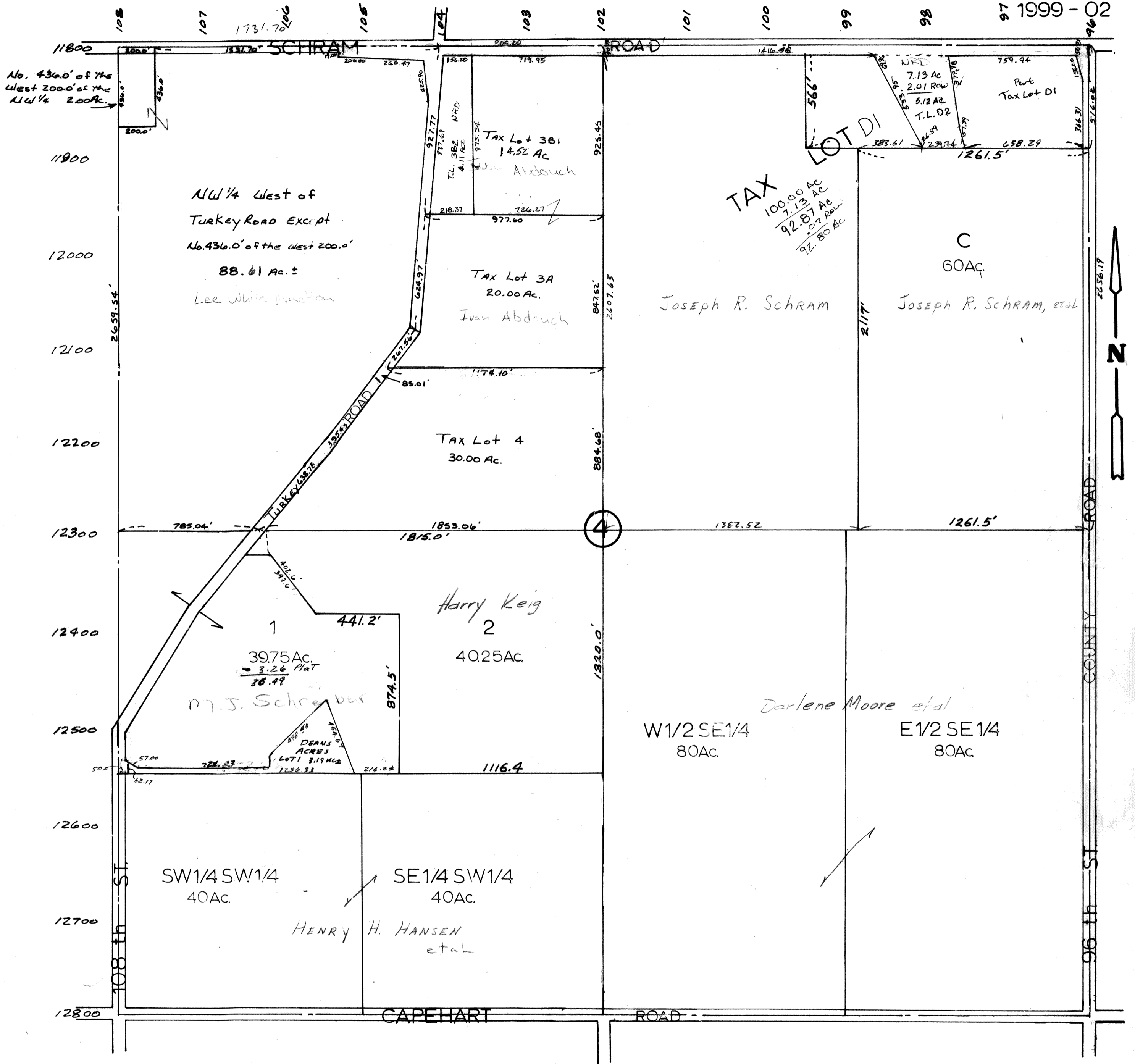


SEC. 4-T13N-R12E
SCALE: 1" = 400'

97 1999 - 02



No. 436.0' of the West 2000.0' of the NW 1/4 200Ac.

NW 1/4 West of Turkey Road Except No. 436.0' of the West 200.0' 88.61 Ac. ± Lee White Trustee

Tax Lot 3B1 14.52 Ac Ivan Abdouch

Tax Lot 3A 20.00 Ac. Ivan Abdouch

Tax Lot 4 30.00 Ac.

Harry Keig 2 40.25 Ac.

M. J. Schreiber 39.75 Ac. 3.26 Plat 38.49

SW 1/4 SW 1/4 40 Ac.

SE 1/4 SW 1/4 40 Ac.

HENRY H. HANSEN et al

TAX LOT D1 100.00 AC 7.13 AC 92.87 AC 10.7 Row 92.80 AC

C 60 Ac.

Joseph R. Schram

Joseph R. Schram, et al

Darlene Moore et al

W 1/2 SE 1/4 80 Ac.

E 1/2 SE 1/4 80 Ac.

TAX LOT D: TL'S A & B COMBINED 100.00 AC ±

SARPY COUNTY SURVEYOR'S OFFICE
JUNE - 1958

- REVISED
- 9 - 3 - 63
 - 3 - 7 - 77
 - 4 - 8 - 83
 - 1 - 10 - 84
 - 7 - 18 - 84
 - 8 - 31 - 93
 - 3 - 27 - 95
 - B - 16 - of Plat