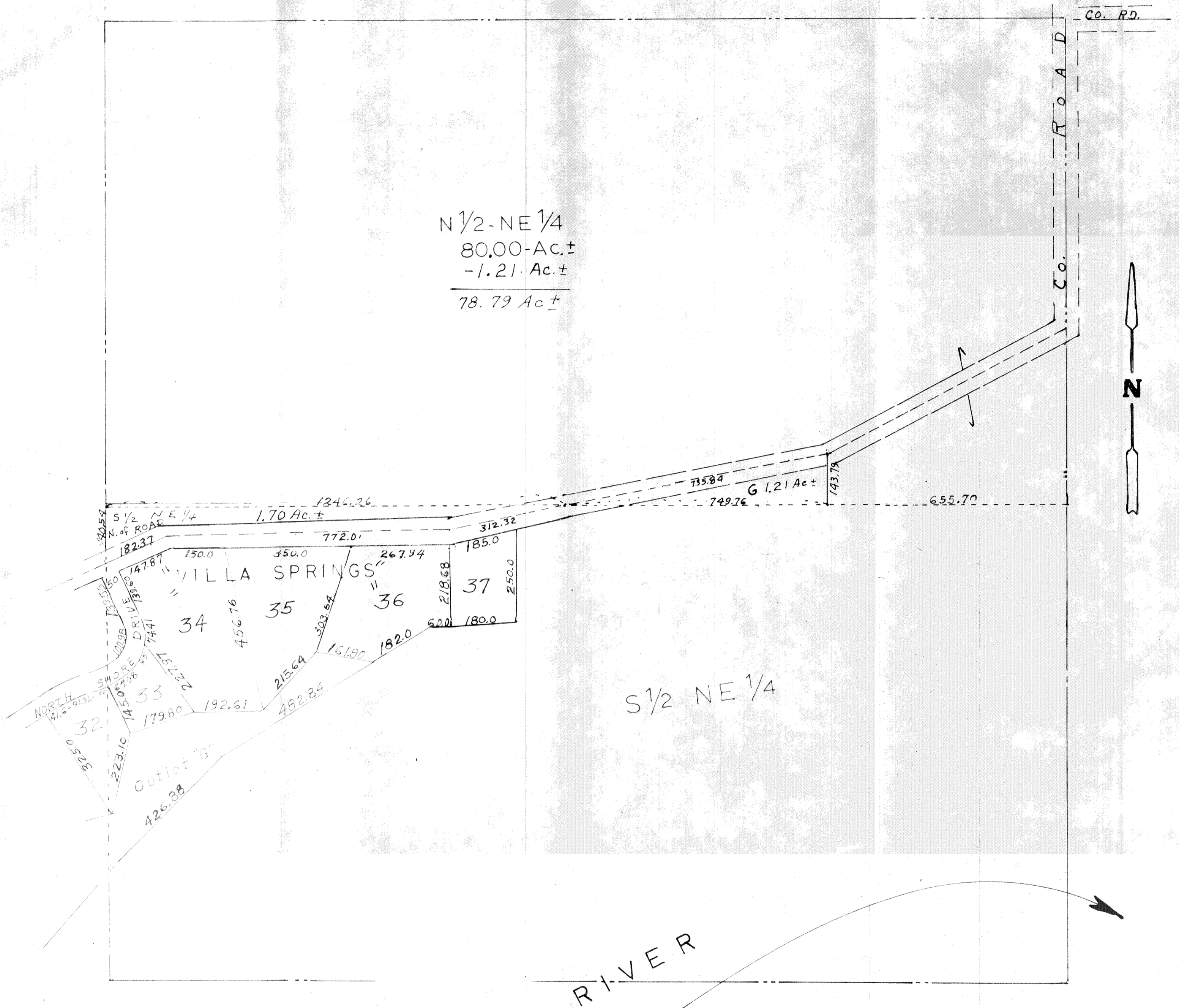


NE 1/4 SEC. 31-T13N-R12E.  
SCALE - 1" = 200'

N 1/2 - NE 1/4  
80.00 - Ac. ±  
- 1.21 - Ac. ±  
-----  
78.79 Ac. ±



PLATTE  
RIVER

SARPY COUNTY SURVEYOR'S OFFICE  
AUGUST - 1972