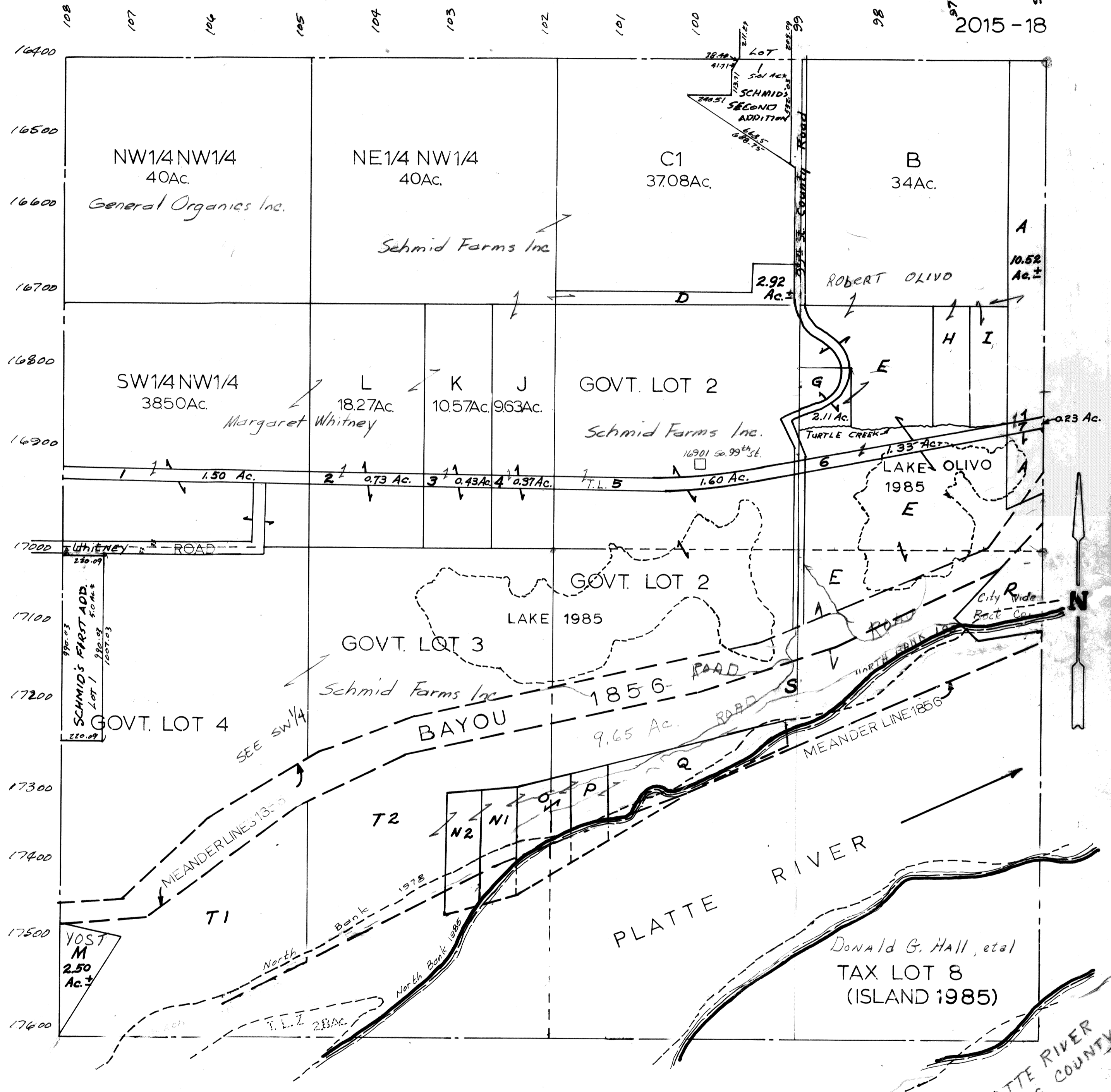


SEC 28 T13N R12E  
SCALE: 1" = 400'

2015-18



SARPY COUNTY SURVEYOR'S OFFICE  
FEBRUARY 1961

PLATTE RIVER  
CASS COUNTY

REVISIED  
3-11-63  
3-7-77  
8-8-78  
4-4-86  
11-19-01-Plat.

C&B&Q RR