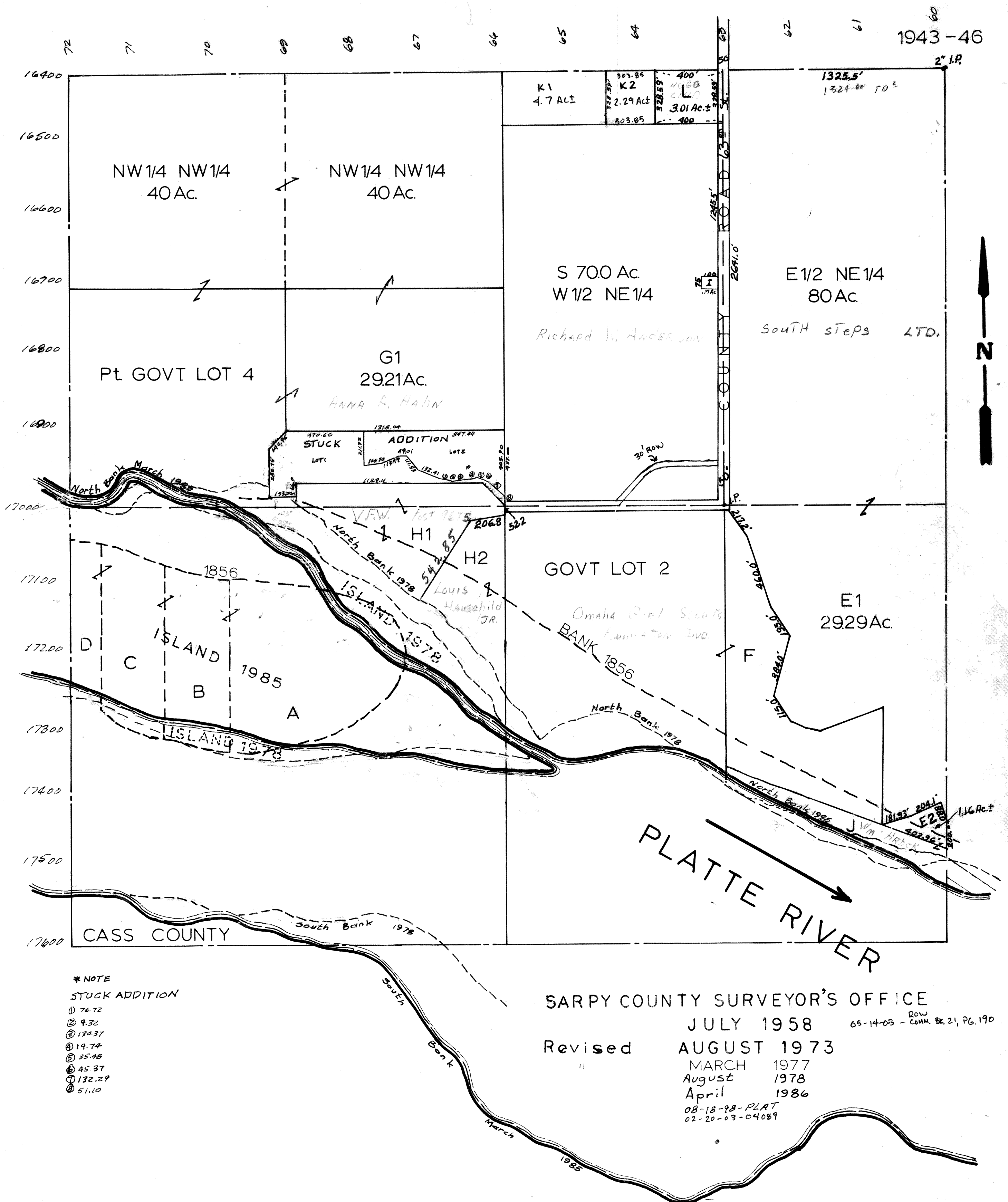


SEC. 25-T13N-R12E.

Scale - 1" = 400'



* NOTE
 STUCK ADDITION
 ① 76.72
 ② 9.32
 ③ 130.37
 ④ 19.74
 ⑤ 35.48
 ⑥ 45.37
 ⑦ 132.29
 ⑧ 51.10

SARPY COUNTY SURVEYOR'S OFFICE
 JULY 1958
 Revised AUGUST 1973
 MARCH 1977
 August 1978
 April 1986
 08-18-88-PLAT
 02-20-03-04089

65-14-03 - ROW COMM. BK. 21, PG. 190