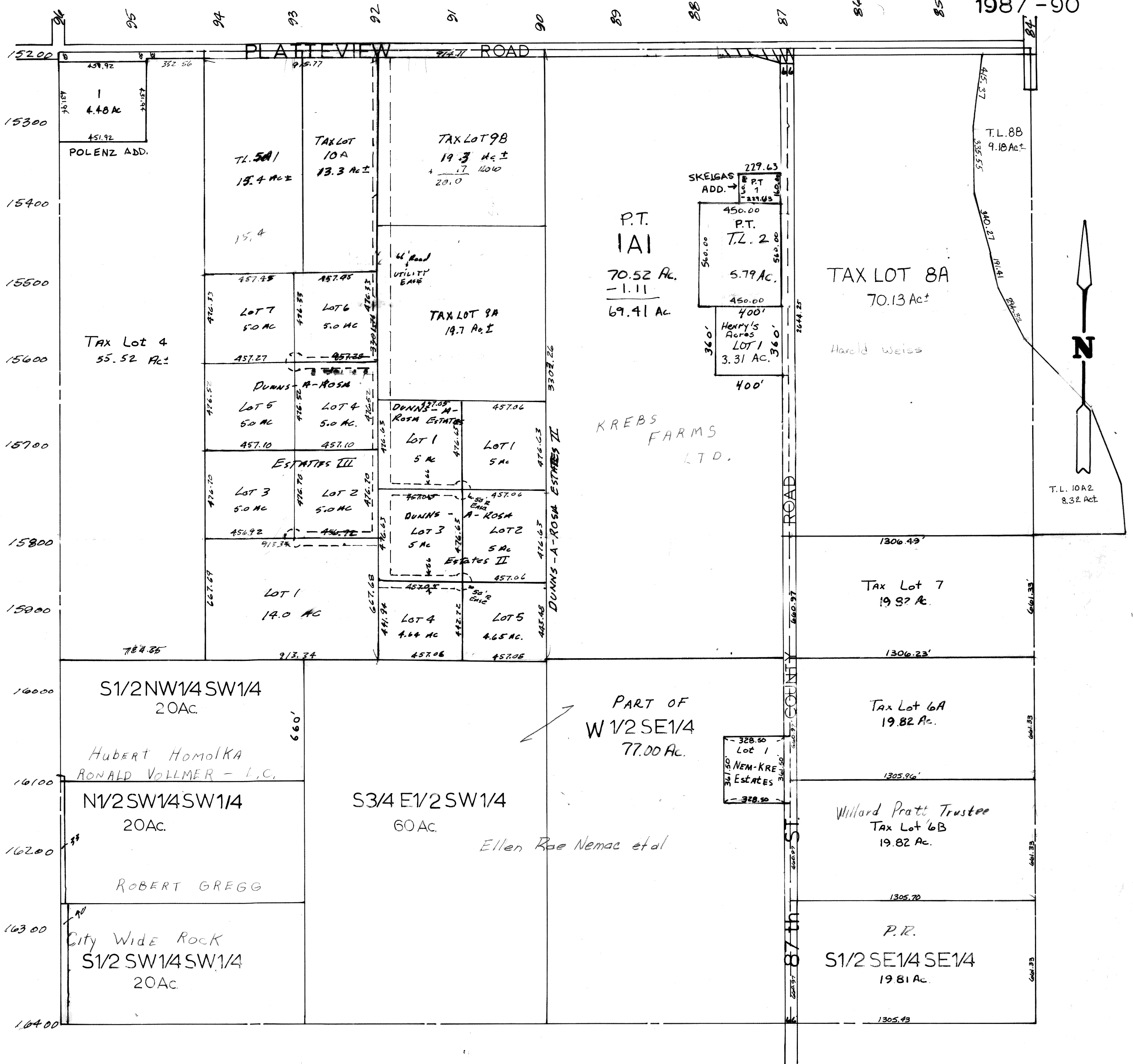


SEC. 22-T13N-R12E.
SCALE - 1" = 400'

1987-90



SARPY COUNTY SURVEYORS OFFICE
JULY, 1958

REVISED
3-12-64
3-7-77
10-19-77
1-11-79
8-22-85
7-7-87
1-27-93
6-17-94
6-14-96 Plats
6-13-97 Plat
12-29-99 L.L.A.
10-02-03
10-08-03