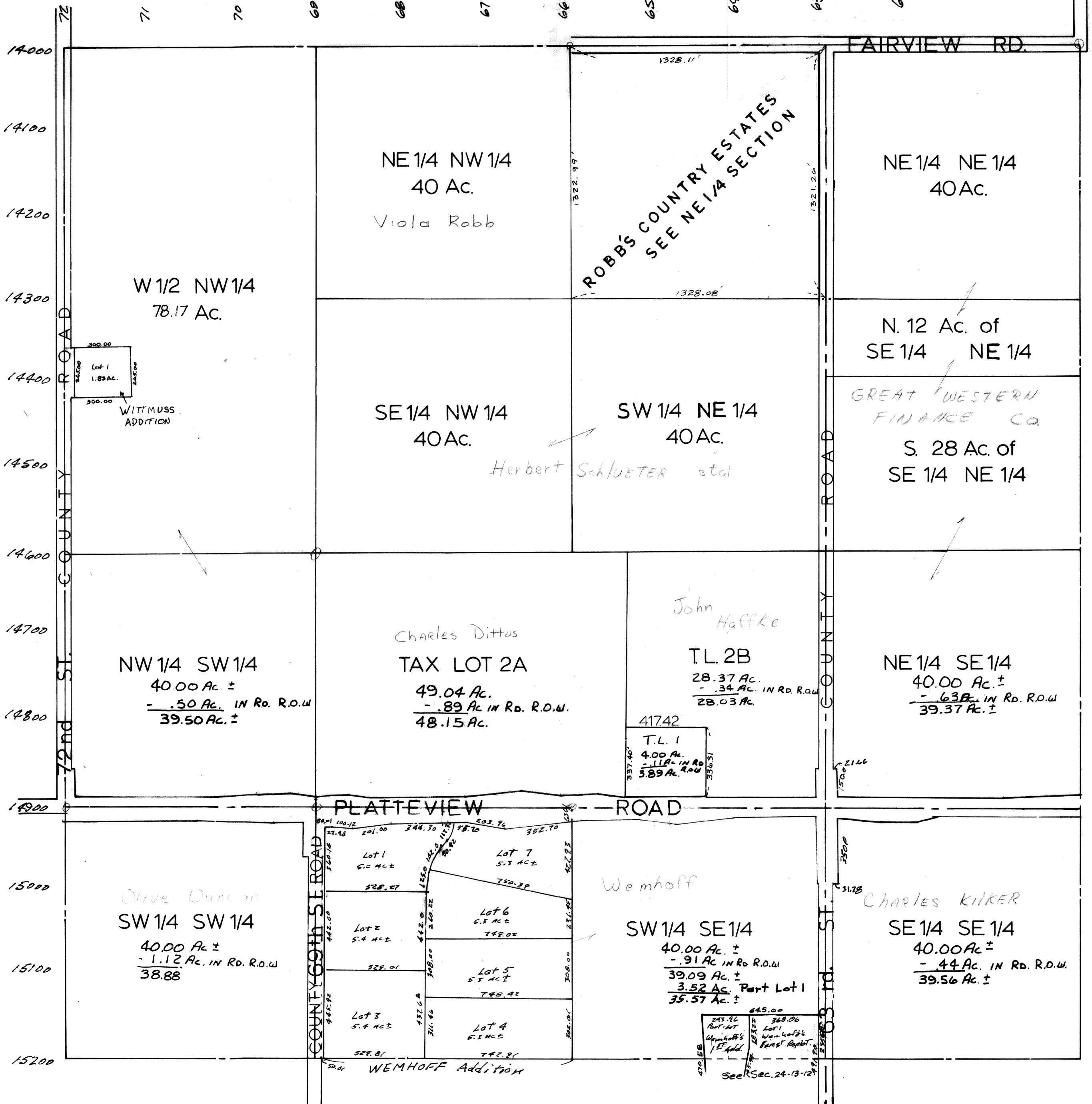


SEC.13 - T13 N - R12 E  
SCALE: 1" = 400'

1935 - 38



SARPY COUNTY SURVEYOR'S OFFICE  
JULY - 1958

- REVISED
- 9-04-63
  - 4-25-73
  - 4-20-77
  - 1-18-78
  - 5-31-78
  - 4-8-80
  - 8-12-85
  - 8-10-89
  - 11-02-93
  - 12-26-95
  - 9-18-97 Plat