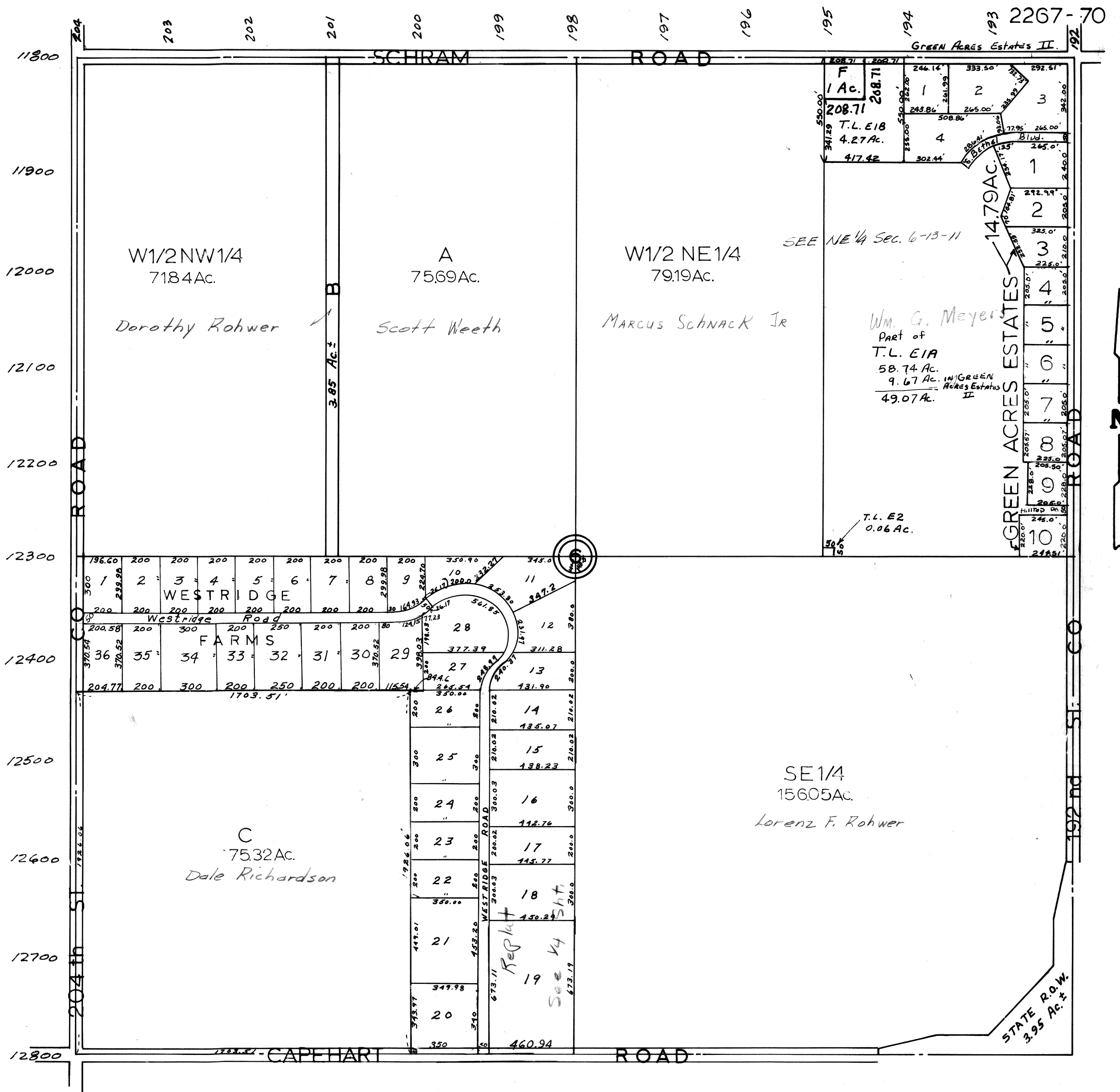


SEC. 6-T13N-R11E.
SCALE—1" = 400'



SARPY COUNTY SURVEYOR'S OFFICE
FEBRUARY, 1958

Revised
10-22-64
1-31-64
12-1-76
4-1-68
3-7-77
11-14-77
11-24-82

79.30 AC.
WESTRIDGE FARMS