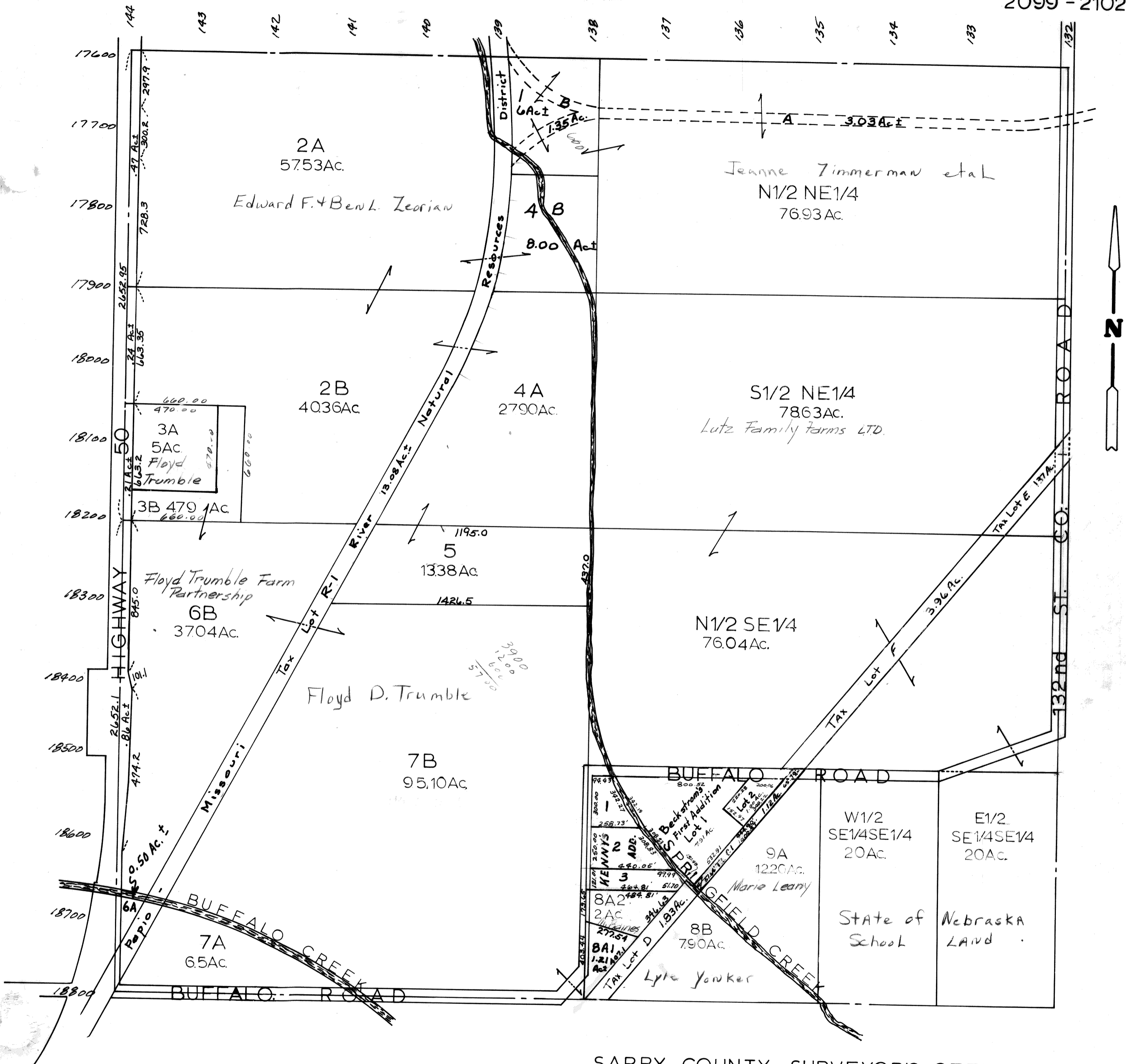


SEC. 36-T13N-R11E

Scale: 1" = 400'

2099 - 2102



SARPY COUNTY SURVEYOR'S OFFICE
MARCH 1959

- REVISED
- 3 - 7 - 77
- 7 - 25 - 84
- 8 - 8 - 85
- 1 - 13 - 86
- 11 - 7 - 91
- 4 - 29 - 92