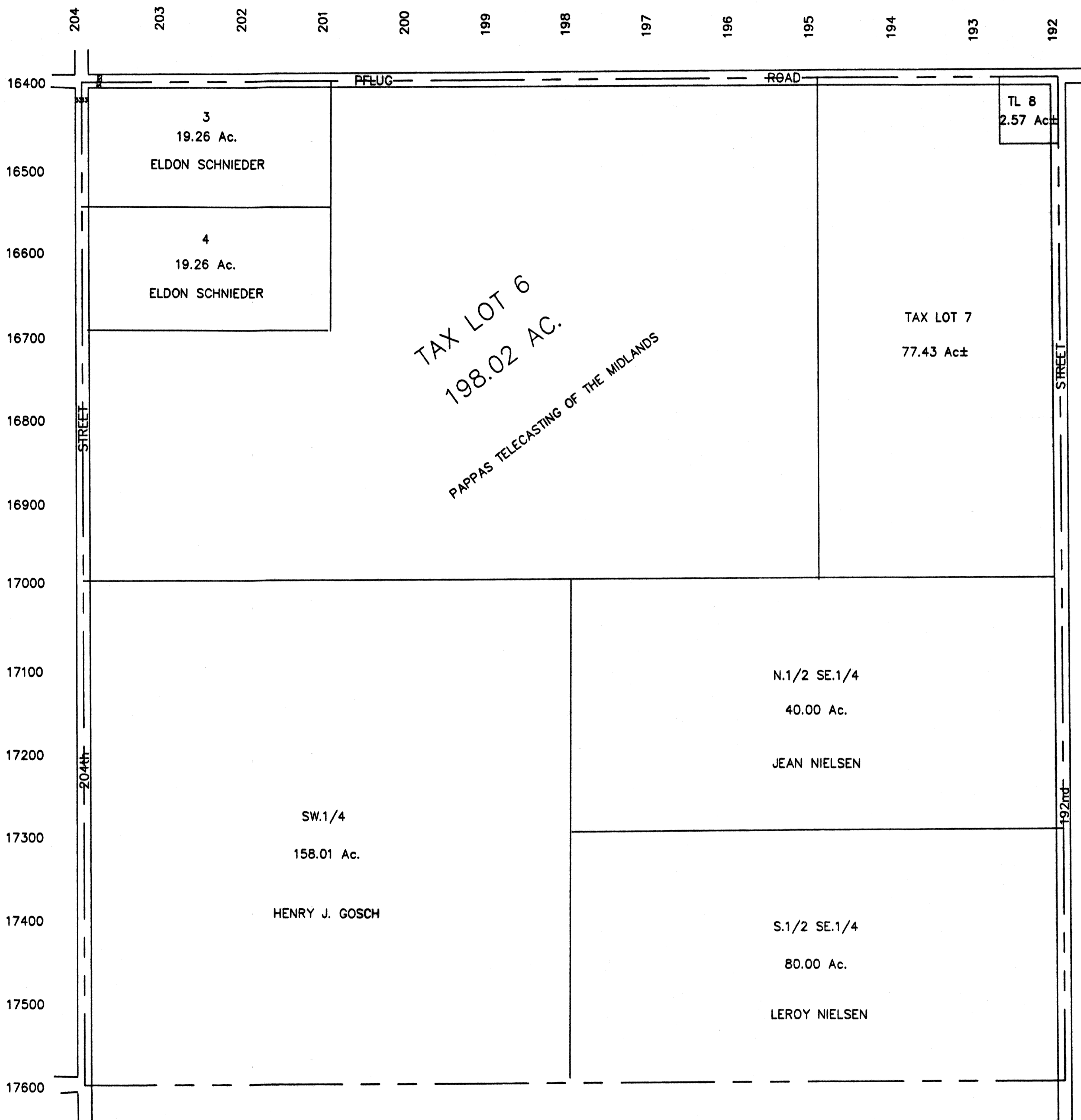


SEC. 30-T13N-R11E

SCALE 1" = 400'

SARPY COUNTY SURVEYOR

2283-86



T.L.5 - T.L.1, S1/2 NW1/4 and
 SW1/4 NE1/4 COMBINED into
 TAX LOT 6

SARPY COUNTY SURVEYOR

NOVEMBER--1964

REVISED
 3-25-1977
 2-18-1982
 03-04-04