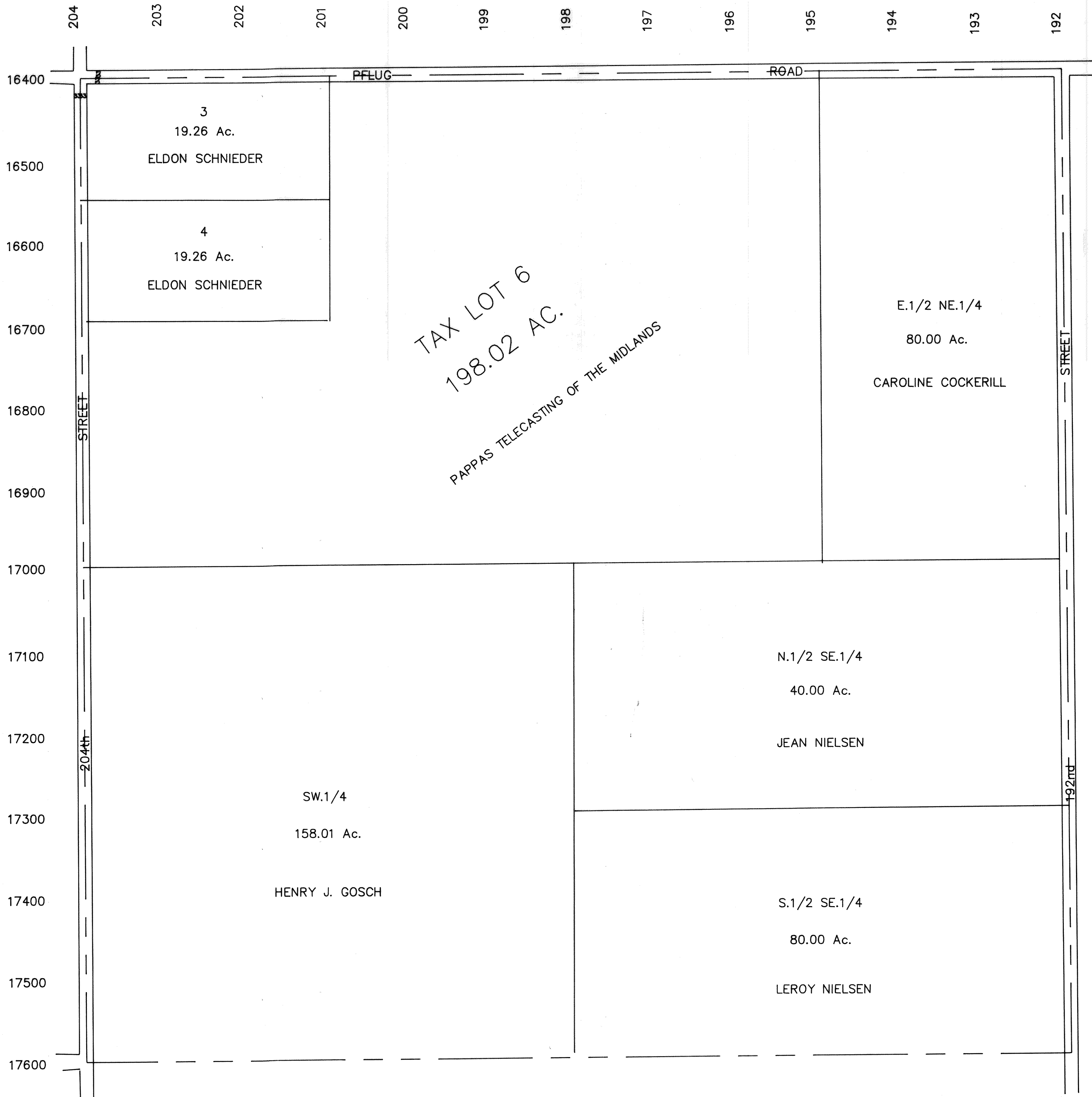


SEC. 30-T13N-R11E

SCALE 1" = 400'

SARPY COUNTY SURVEYOR

2283-86



T.L.5 - T.L.1, S1/2 NW1/4 and
SW1/4 NE1/4 COMBINED into
TAX LOT 6

SARPY COUNTY SURVEYOR

NOVEMBER--1964

REVISED
3-25-1977
2-18-1982