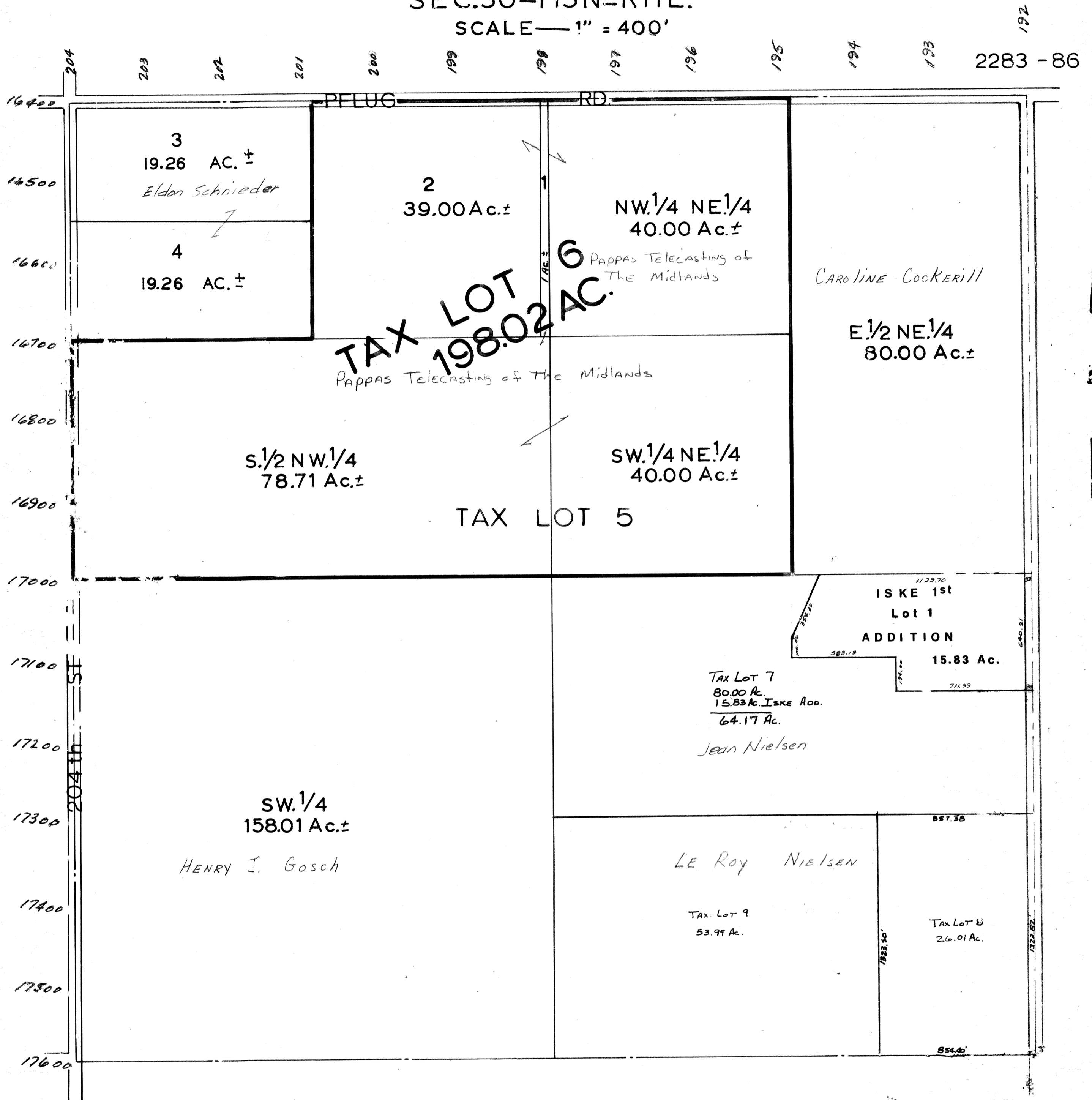


SEC.30-T13N-R11E.

SCALE — 1" = 400'



T.L.5 - TL1, S1/2 NW1/4, & SW1/4 NE1/4 COMBINED

SARPY COUNTY SURVEYOR'S OFFICE.
NOVEMBER - 1964

Revised
3/25/1977 7-12-90
2/18/1982