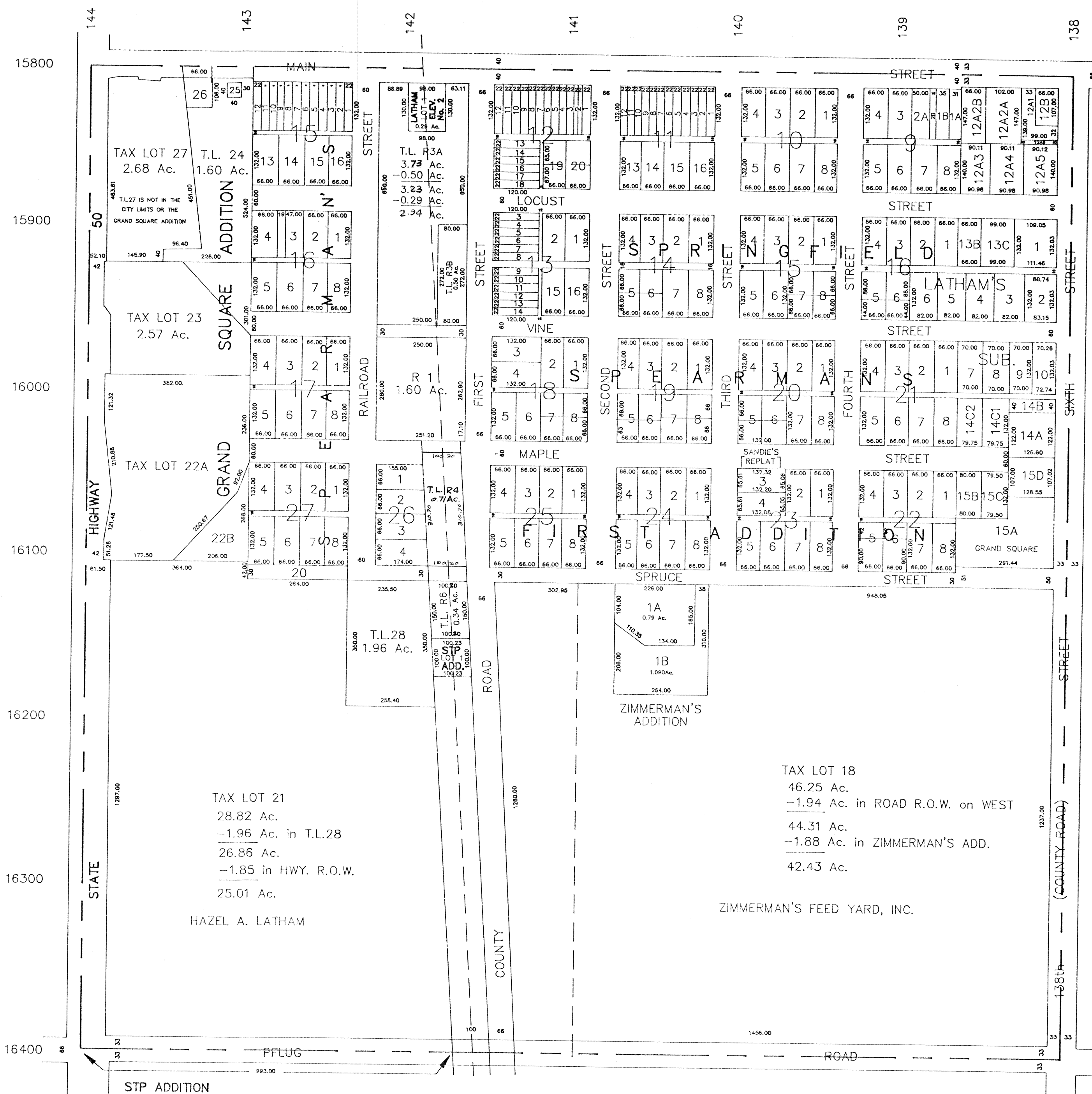


SW1/4 SEC. 24-T13N-R11E

SCALE--1"=200'

RONALD A. RYSTROM
SARPY COUNTY SURVEYOR

2094



STP ADDITION
 A One Lot Platting of that part of the Missouri Pacific Railroad (Abandoned)
 REPLAT LOTS 3 and 4 BLOCK 18 SPEARMAN'S FIRST ADDITION

SANDIE'S REPLAT LOTS 3 and 4 BLOCK 23 SPEARMAN'S FIRST ADDITION

LATHAM'S SUBDIVISION in BLOCKS 16 AND 21

SARPY COUNTY FAIRGROUNDS

SPEARMAN'S FIRST ADDITION INCLUDES BLOCKS 15 THUR 27

SPRINGFIELD INCLUDES BLOCKS 9 THUR 16

SARPY COUNTY SURVEYOR
 FEBRUARY--1958

REVISED

- MARCH 1960
- DECEMBER 1987
- FEBRUARY 1988
- DECEMBER 1989
- APRIL 1990
- JULY 1990
- AUGUST 1990
- NOVEMBER 1990
- February 1991