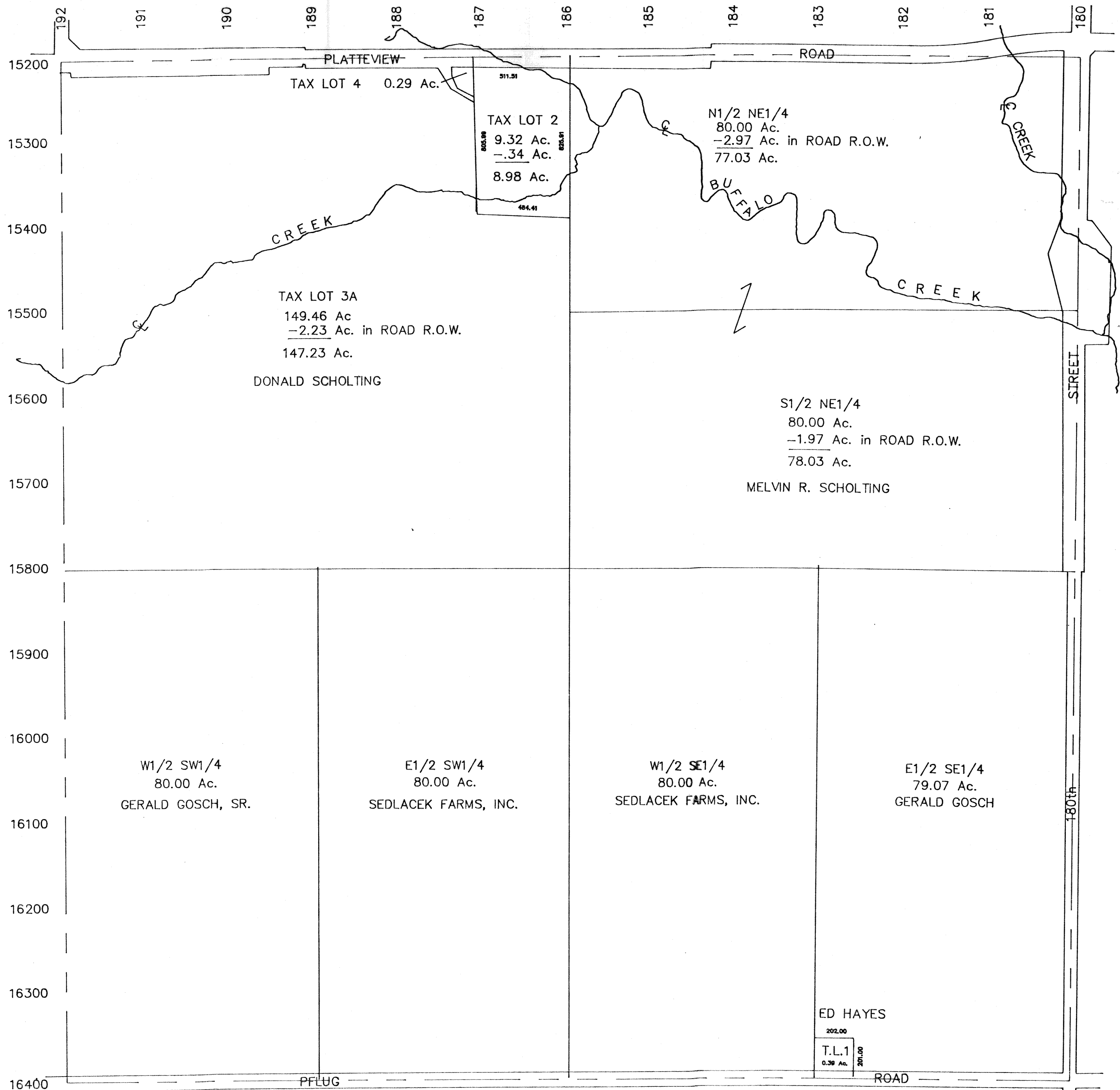


SEC. 20-T13N-R11E  
SCALE--1"=400'

RONALD A. RYSTROM  
SARPY COUNTY SURVEYOR

2239-42



SARPY COUNTY SURVEYOR  
NOVEMBER--1964

REVISED  
MARCH 1978  
JANUARY 1979  
JUNE 1980  
JUNE 1981  
APRIL 1989