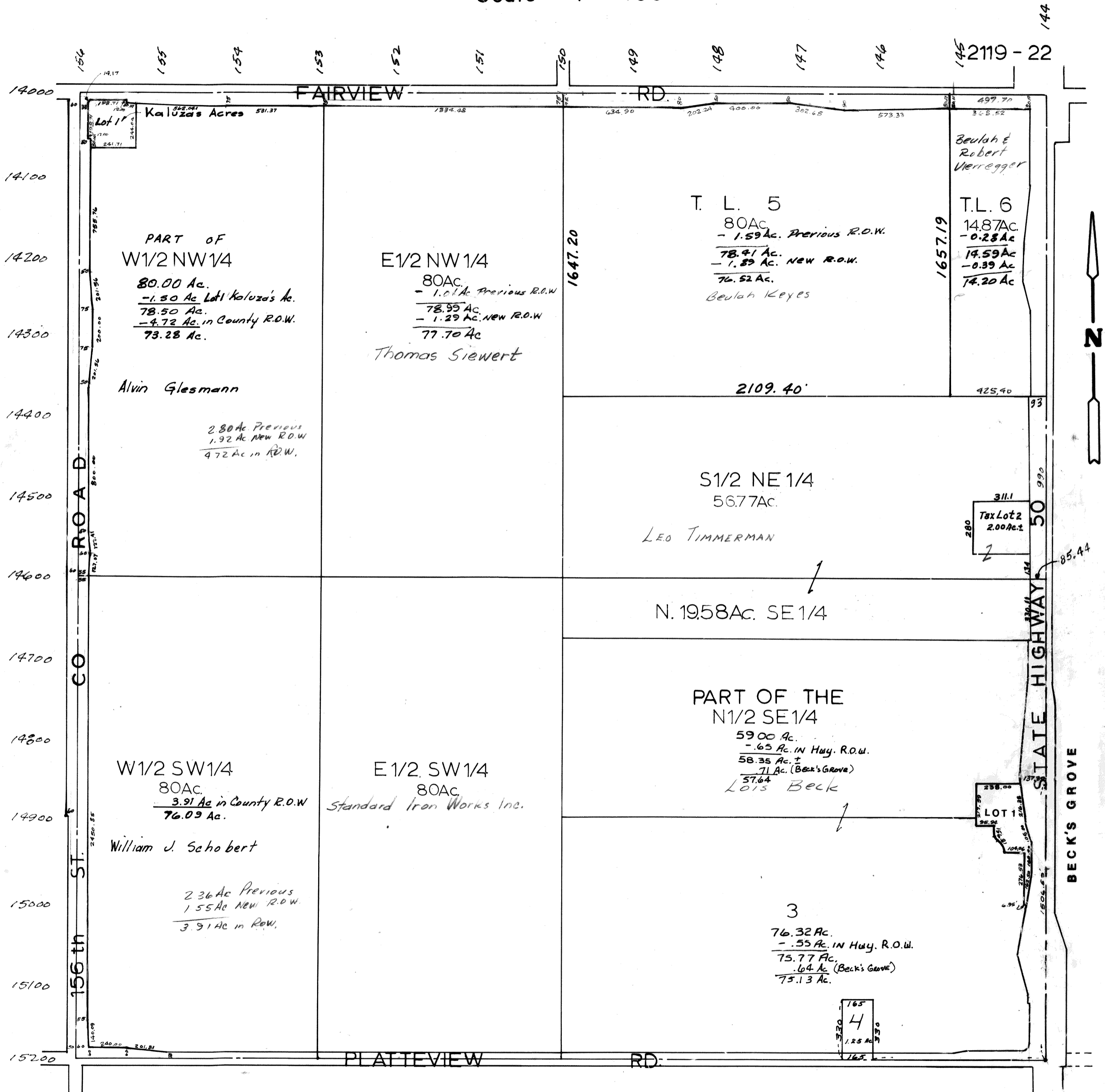


SEC.14-T13N-R11E
Scale — 1" = 400'



SARPY COUNTY SURVEYOR'S OFFICE
FEBRUARY, 1958

- REVISED
- 12 - 20 - 63
 - 4 - 2 - 65
 - 3 - 7 - 77
 - 4 - 4 - 78
 - 11 - 16 - 88
 - 4 - 5 - 91
 - 10 - 28 - 91