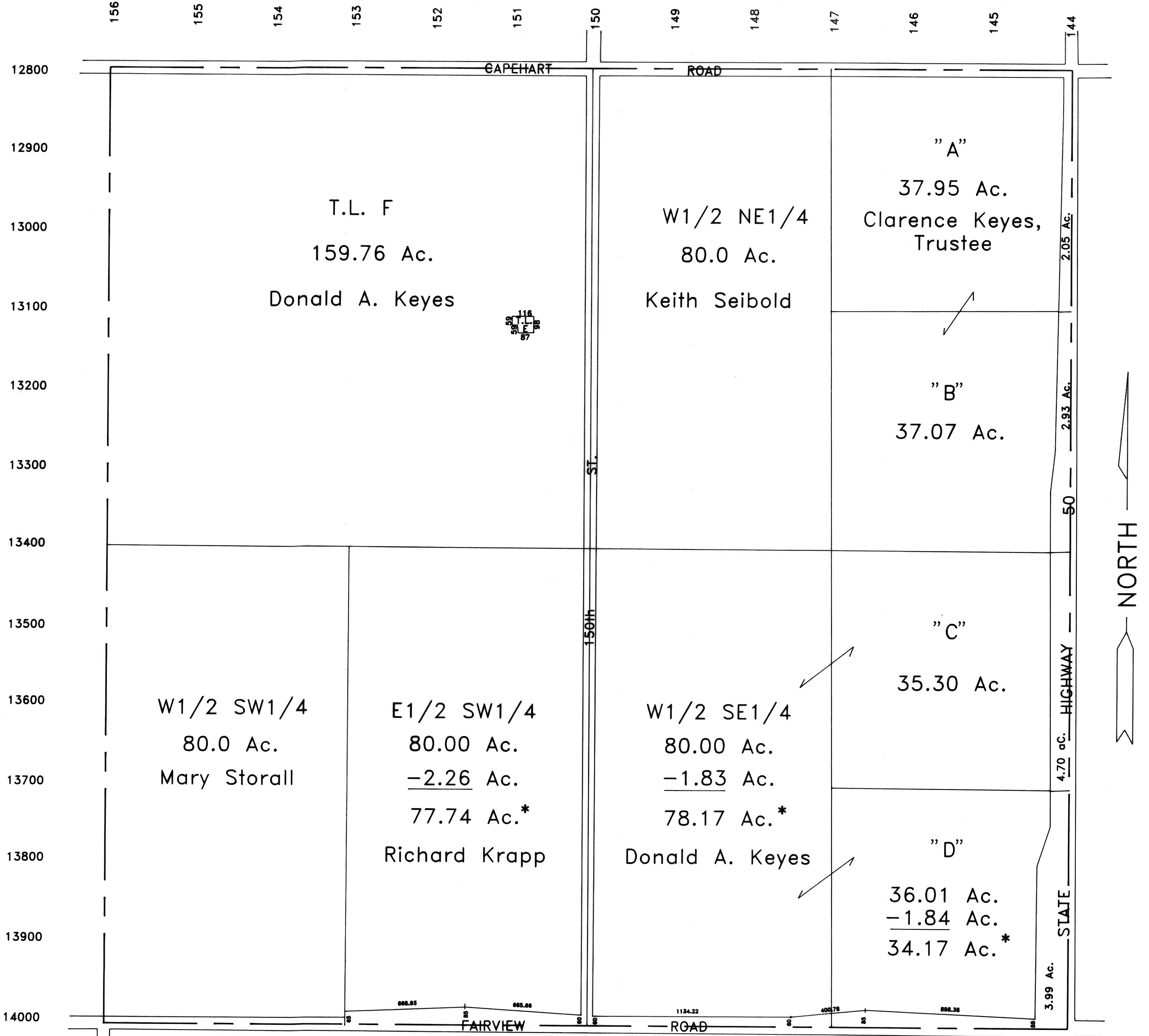


SEC. 11-T13N-R11E

SCALE: 1"=400"

2115-18



\* THE EXISTING AND NEW ROAD R.O.W HAS BEEN DEDUCTED FROM THESE TAX LOTS

SARPY COUNTY SURVEYOR'S OFFICE

NOVEMBER - 1964

APRIL - 1991