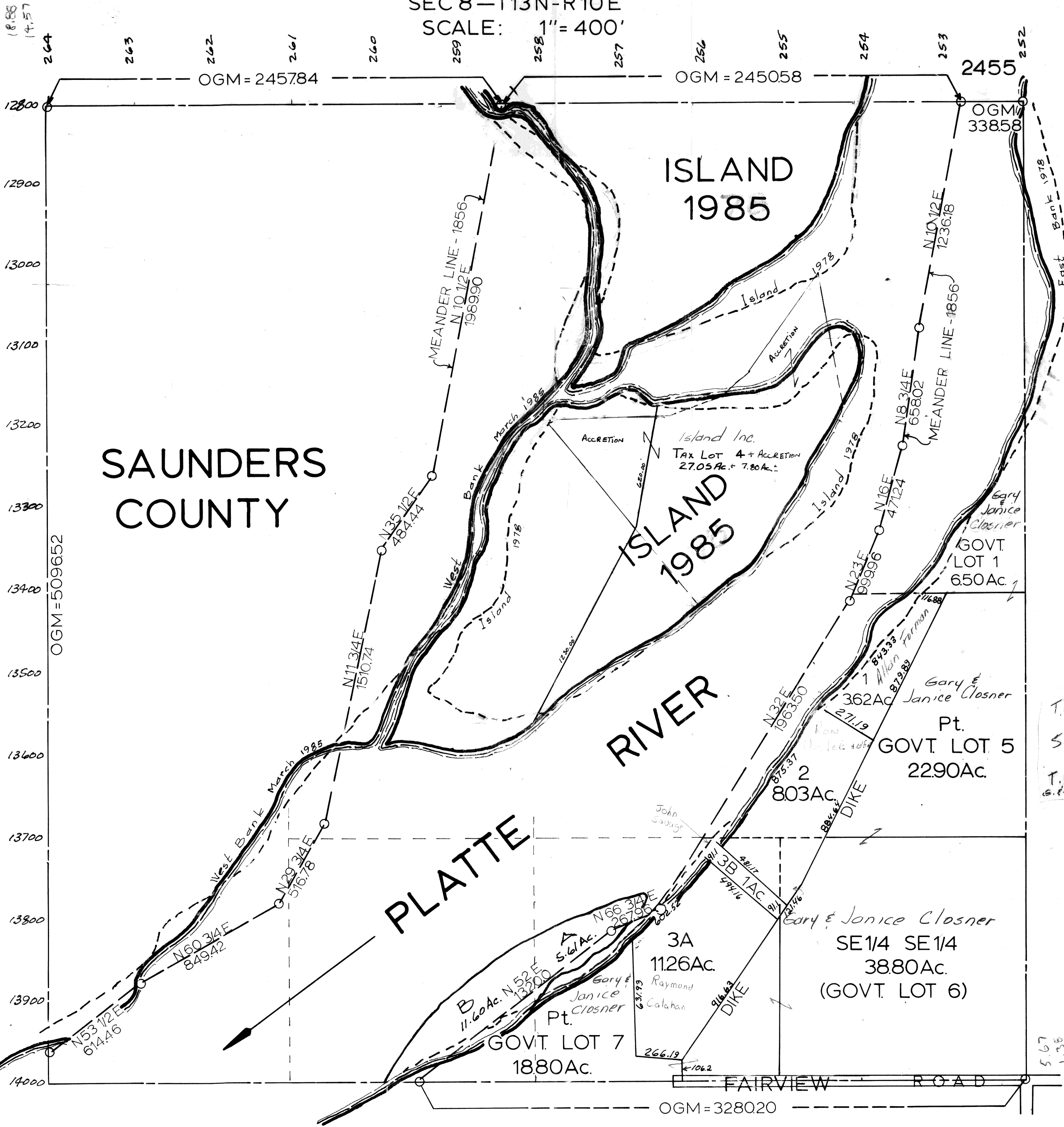


SEC 8-T13N-R10E

SCALE: 1" = 400'



OGM = ORIGINAL GOVERNMENT MEASURE.

SARPY COUNTY SURVEYORS OFFICE  
JANUARY 1962

- REVISED
- 3-27-73
  - 2-21-63
  - 1-07-77
  - 8-7-78
  - 3-12-86
  - 1-8-88
  - 5-23-90
  - 10-30-90