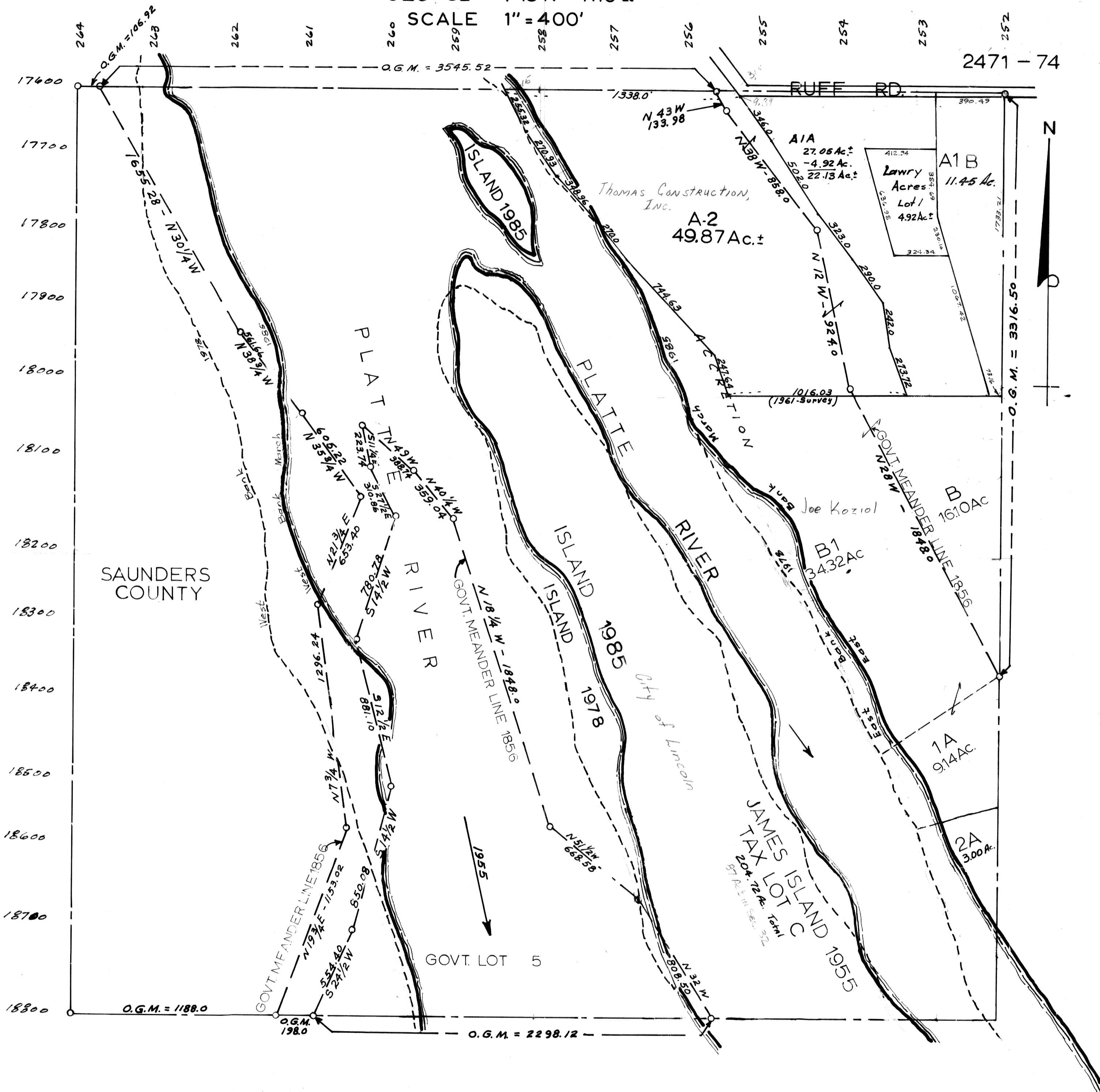


SEC 32 T13N R10E

SCALE 1" = 400'

2471 - 74



O.G.M.= ORIGINAL GOVERNMENT MEASURE

SARPY COUNTY SURVEYOR'S OFFICE
 JANUARY - 1961
 REVISED - MARCH - 1977
 August - 1978

Revised
 5-18-64.
 3-14-86
 5-12-92