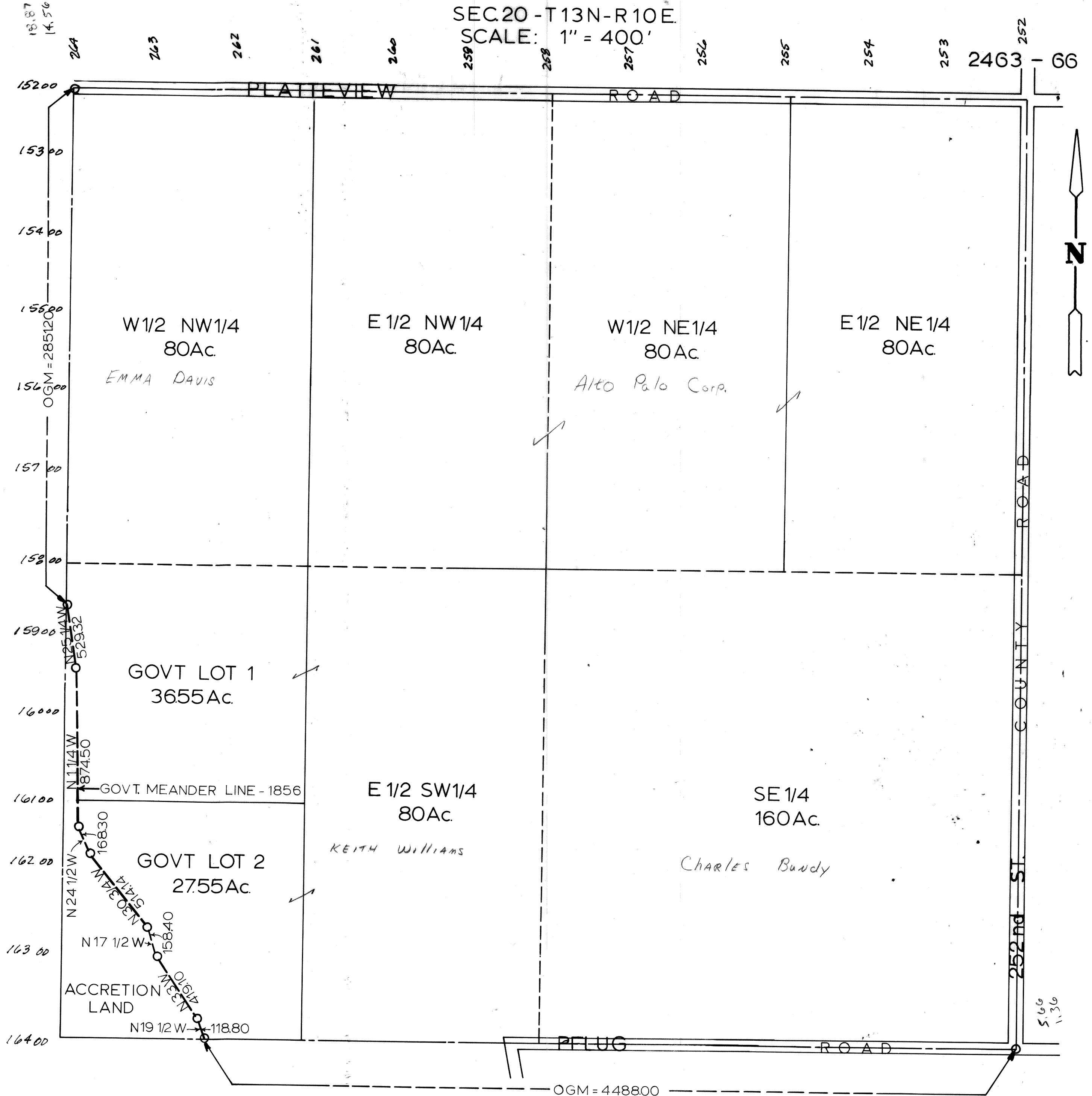


SEC. 20 - T13N-R10E  
SCALE: 1" = 400'



OGM=ORIGINAL GOVERNMENT MEASURE  
NOTE: ACREAGES SHOWN ON THE GOVERNMENT  
LOTS IN THIS SECTION ARE TAKEN FROM  
THE ORIGINAL GOVERNMENT SURVEY OF 1856.

SARPY COUNTY SURVEYOR'S OFFICE  
JANUARY—1962

REVISED  
JULY—1963  
MARCH - 1977