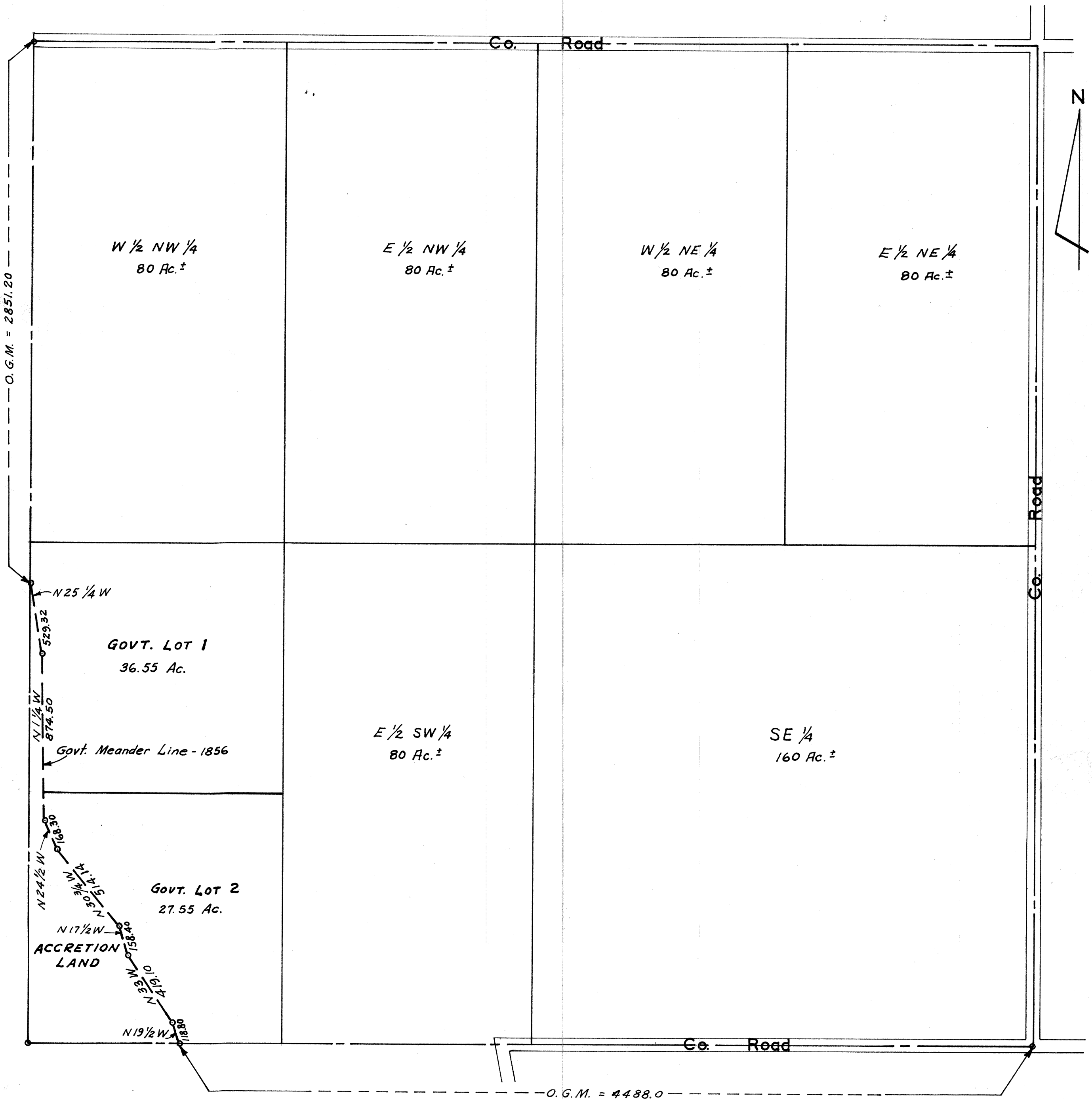


SEC 20 - T 13 N - R 10 E

SCALE: 1 INCH = 400 FEET



O. G. M. = Original Government Measure

NOTE: ACREAGES SHOWN ON THE GOVERNMENT LOTS IN THIS SECTION ARE TAKEN FROM THE ORIGINAL GOVERNMENT SURVEY OF 1856.

OFFICIAL PLAT
Sarpy County Surveyor's Office
February - 1958
F.I.W. - N.P.W.
REVISED JANUARY 1962