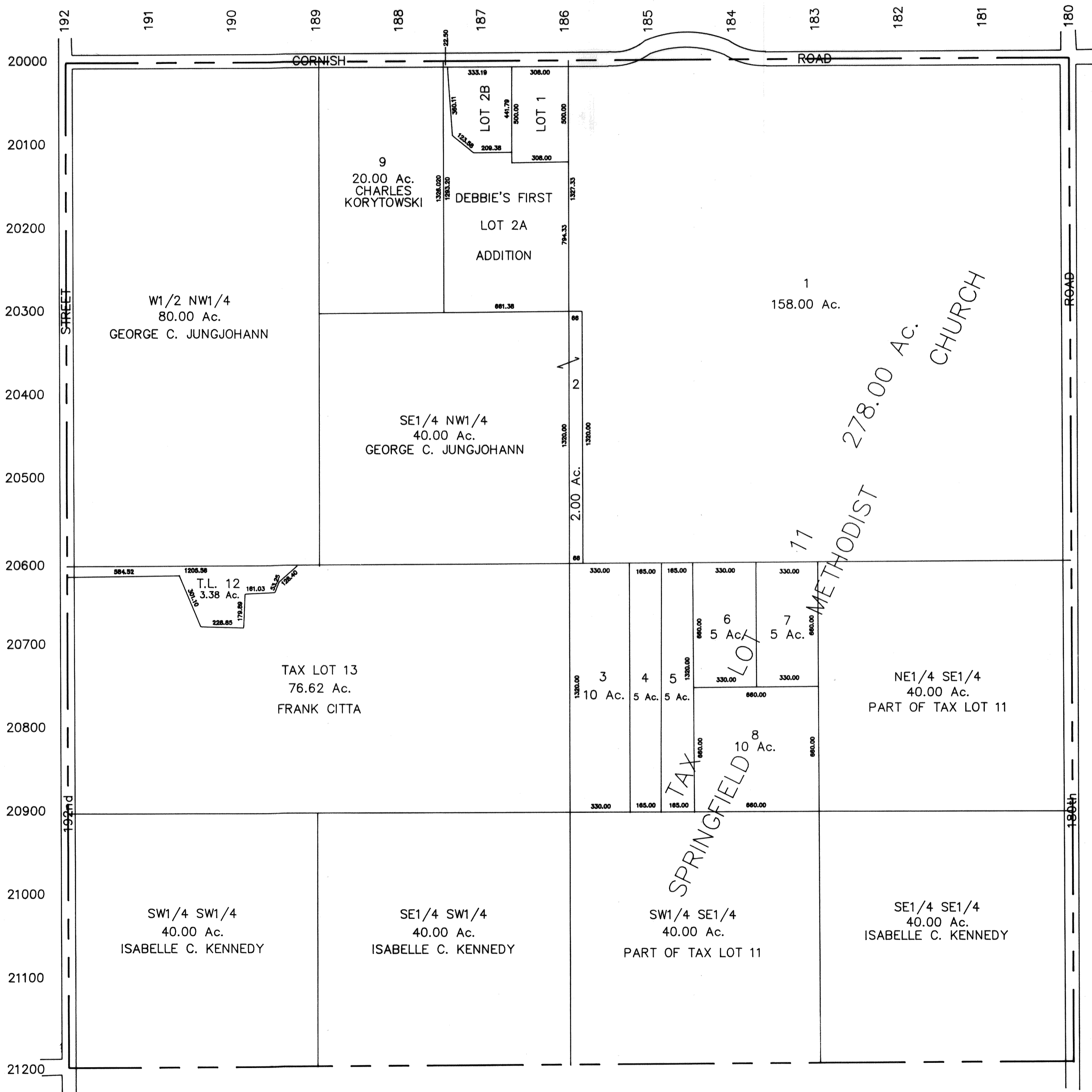


SEC. 8-T12N-R11E
SCALE--1"=400'

SARPY COUNTY SURVEYOR

2255-58



TAX LOT 11: Is all of Tax Lots 1,3,4,5,6,7,8, NE1/4 SE1/4 and the SW1/4 SE1/4 combined.

SARPY COUNTY SURVEYOR
FEBRUARY--1958

REVISED
MARCH 1977
DECEMBER 1978
MARCH 1987
JANUARY 1989
FEBRUARY 1989