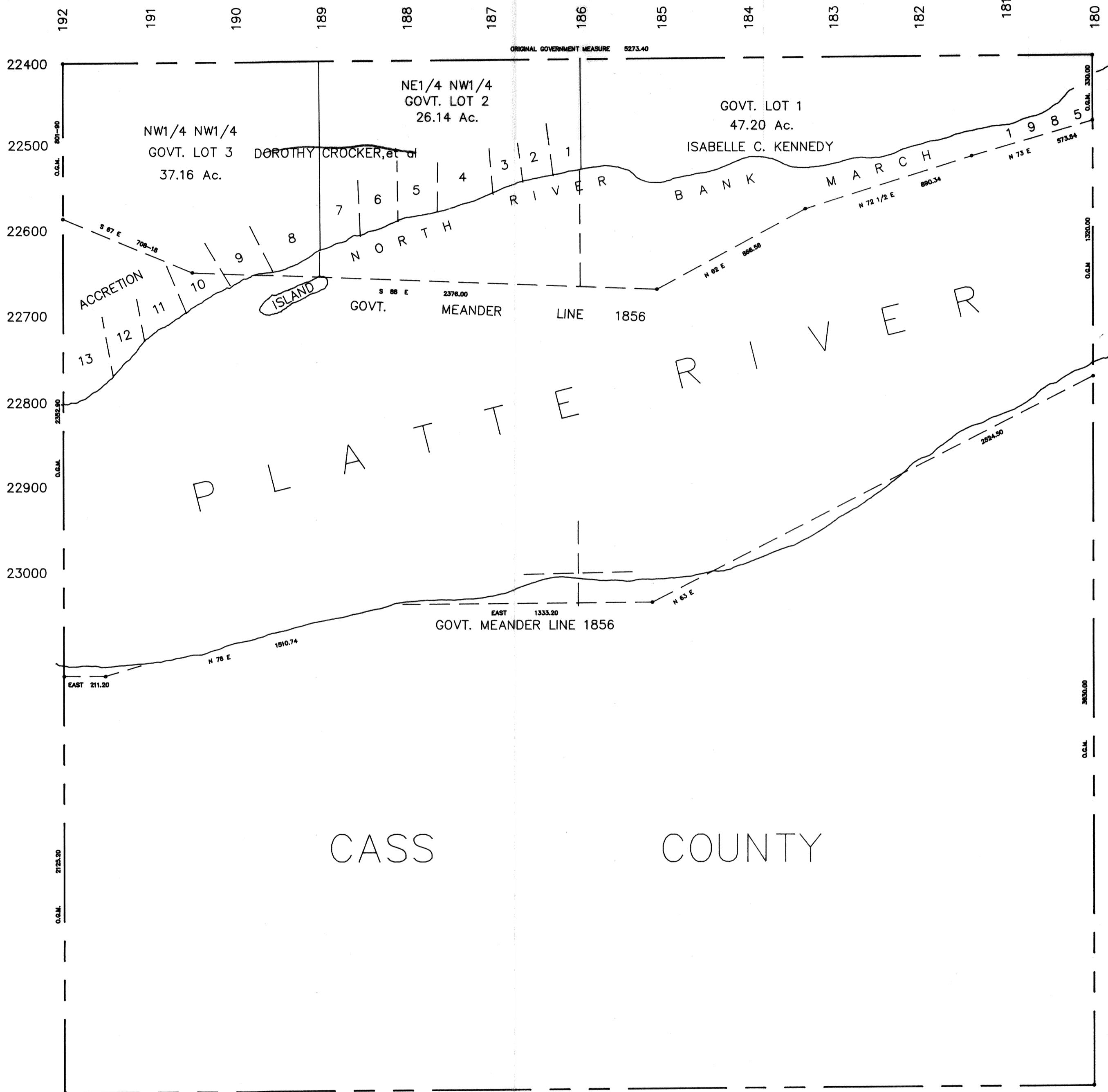


SEC. 20 T12N-R11E
SCALE--1"=400'

SARPY COUNTY SURVEYOR

2012-11



O.G.M. = ORIGINAL GOVERNMENT MEASURE

O.G.M. 5285.28

NOTE

ACREAGE SHOWN ON THE GOVERNMENT LOTS
IN THIS SECTION ARE TAKEN FROM THE
ORIGINAL GOVERNMENT SURVEY OF 1856.

SARPY COUNTY SURVEYOR
JANUARY--1962

REVISED

3- -77
3-26-86