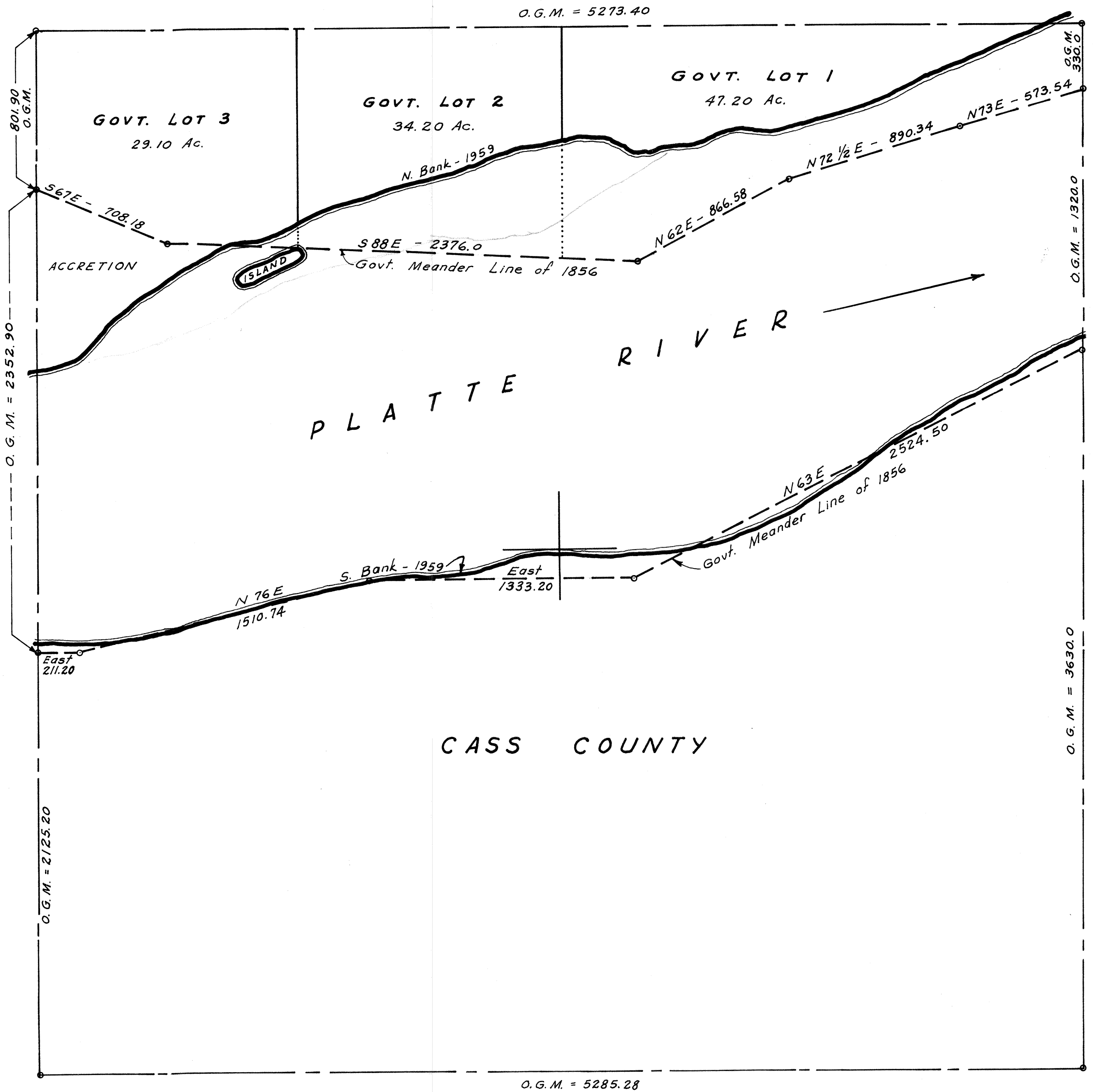


SEC. 20 - T12N-R11E

SCALE: 1 INCH = 400 FEET



O.G.M. = Original Government Measure

NOTE: ACREAGES SHOWN ON THE GOVERNMENT LOTS IN THIS SECTION ARE TAKEN FROM THE ORIGINAL GOVERNMENT SURVEY OF 1856.

OFFICIAL PLAT  
SARPY COUNTY SURVEYOR'S OFFICE

January, 1962

F.I.W. - N.P.W.