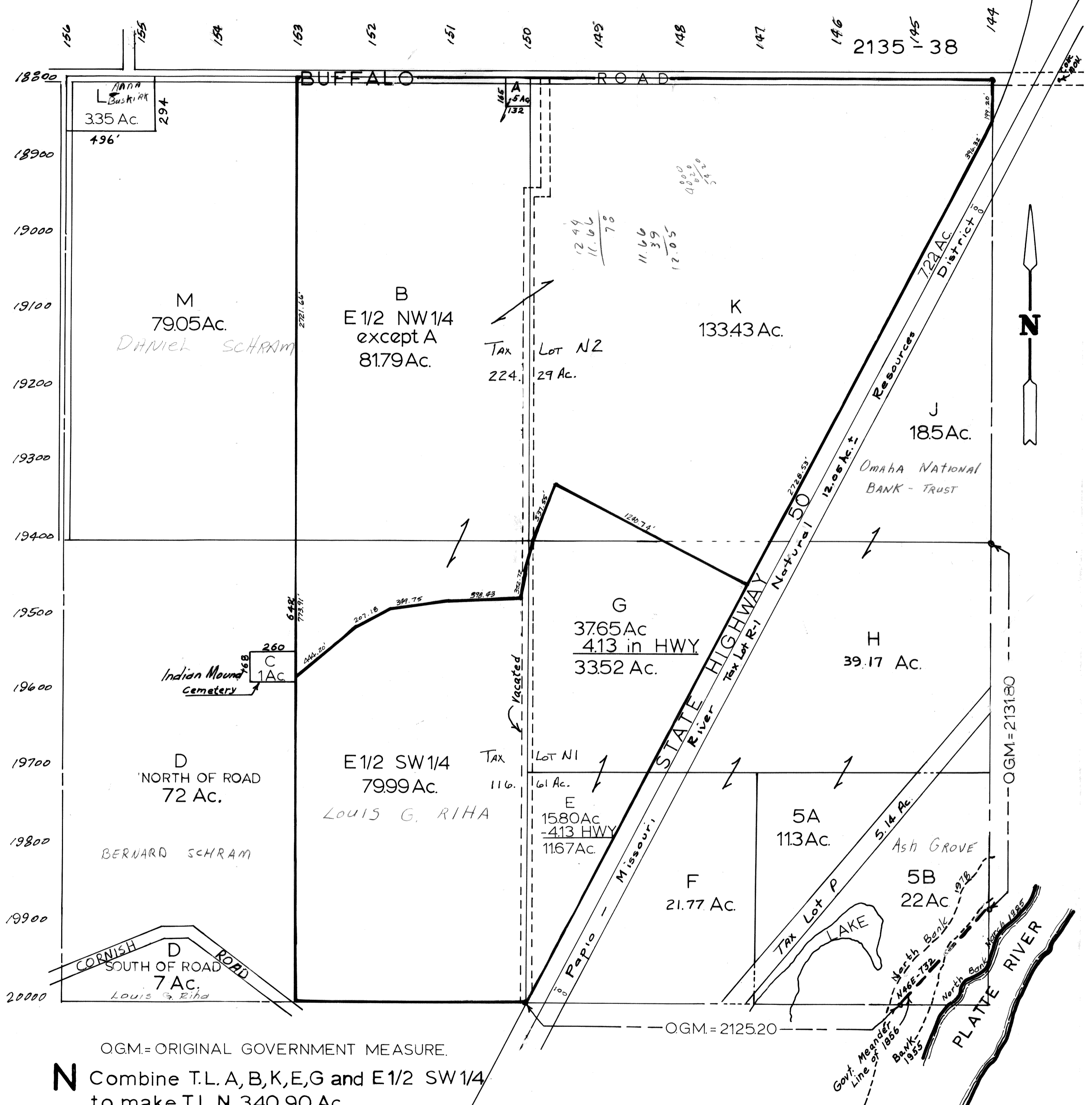


SEC. 2-T12N-R11E
Scale: 1" = 400'



OGM.= ORIGINAL GOVERNMENT MEASURE.
N Combine T.L. A, B, K, E, G and E 1/2 SW 1/4 to make T.L.N 340.90 Ac.

SARPY COUNTY SURVEYORS OFFICE
FEBRUARY 1958

- Revised. 1962
 " MARCH 1977
 August - 1978
 April - 1983
 October - 1984
 August - 1985
 March - 1986
 April - 1992