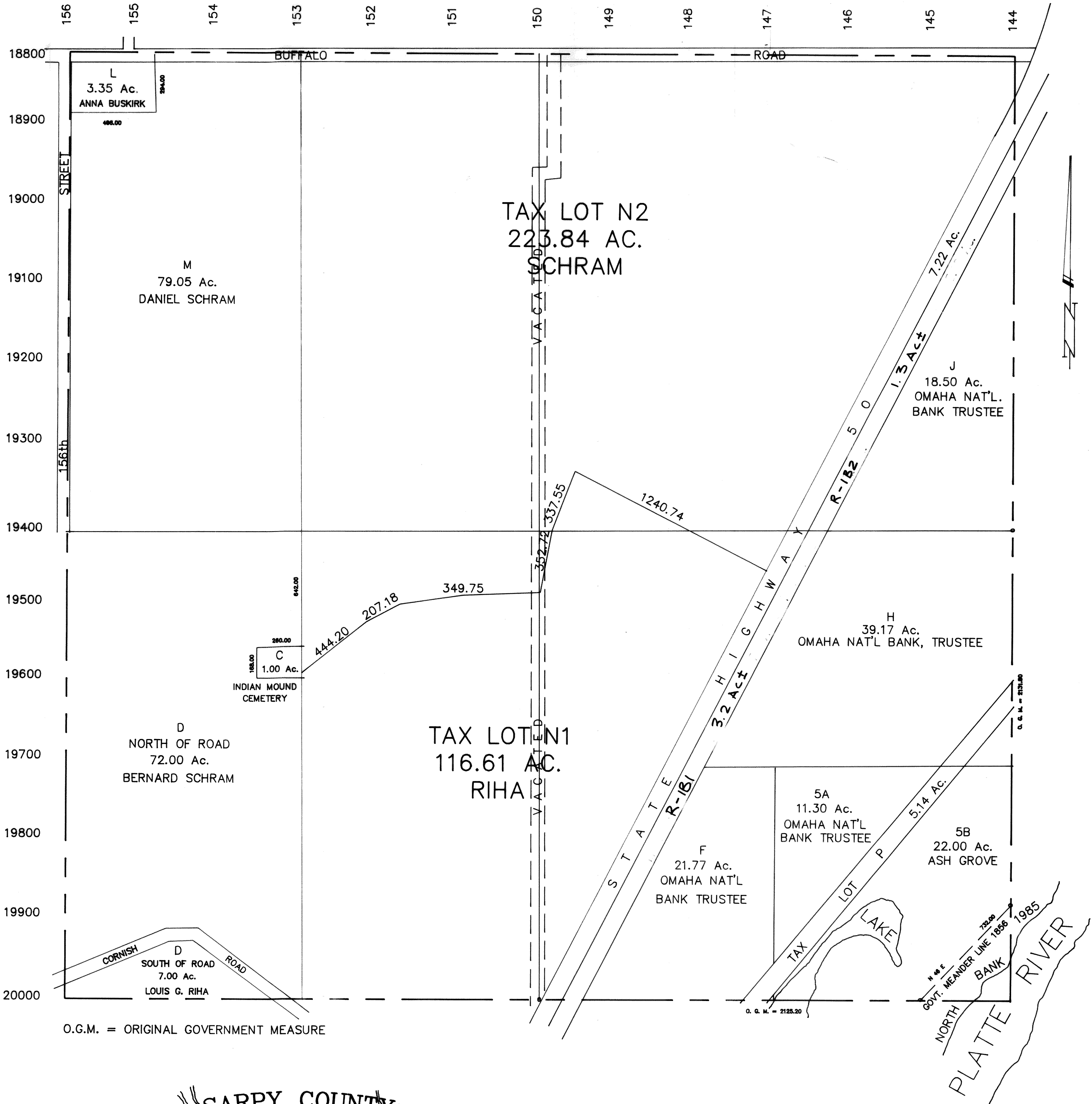


SEC. 2 - T12N-R11E  
SCALE--1" = 400'

SARPY COUNTY SURVEYOR

2135-38



O.G.M. = ORIGINAL GOVERNMENT MEASURE

SARPY COUNTY  
SURVEYOR'S OFFICE

REVISED  
MARCH 1977  
AUGUST 1978  
APRIL 1983  
OCTOBER 1984  
AUGUST 1985  
MARCH 1986  
05-20-02-3796B