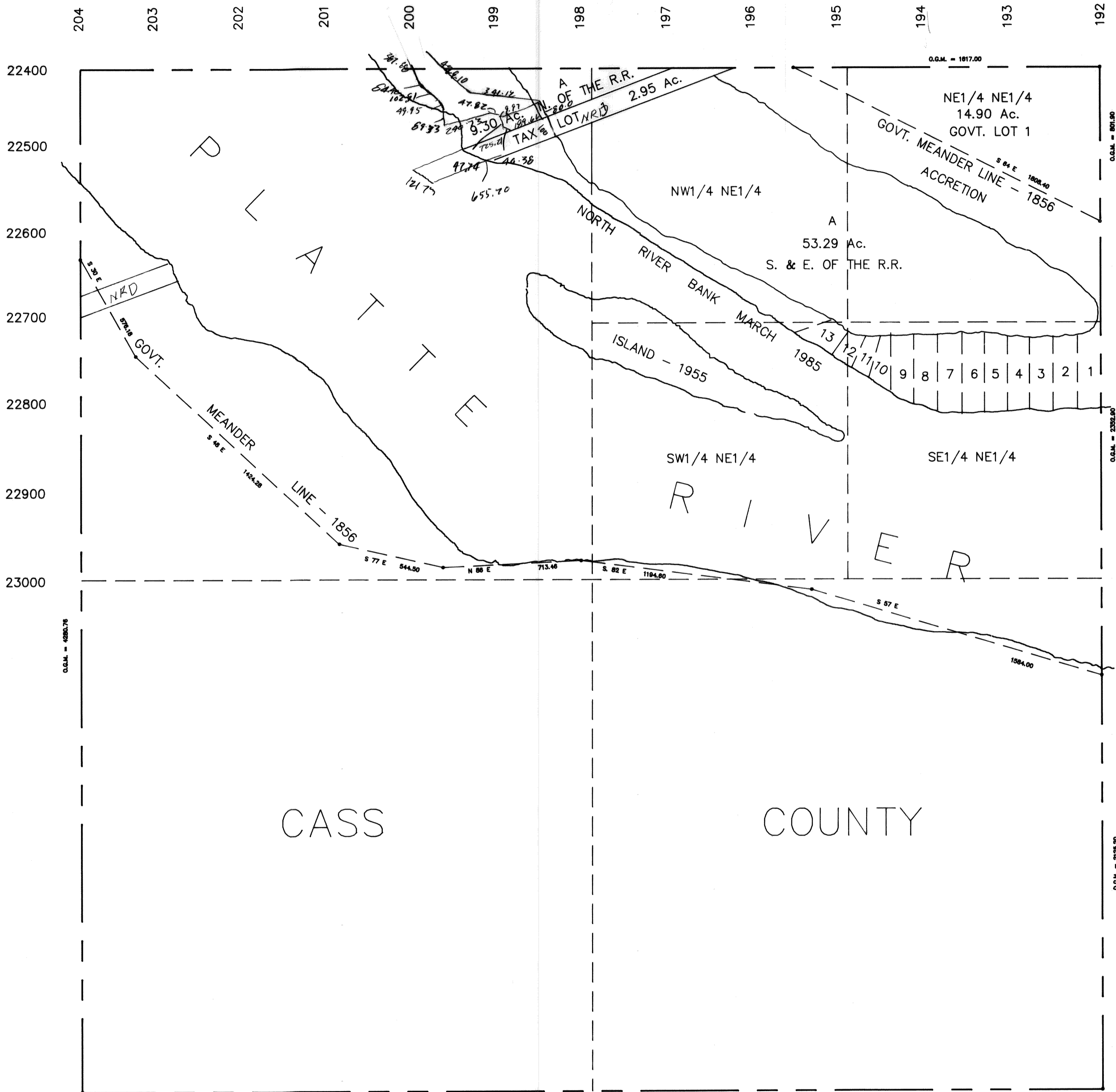


SEC. 19-T12N-R11E

SCALE--1"=400'

SARPY COUNTY SURVEYOR

1912-11



O.G.M. = ORIGINAL GOVERNMENT MEASURE

O.G.M. = 5369.10

SARPY COUNTY SURVEYOR
FEBRUARY - 1958

REVISED

JANUARY	1962
MARCH	1977
MARCH	1986