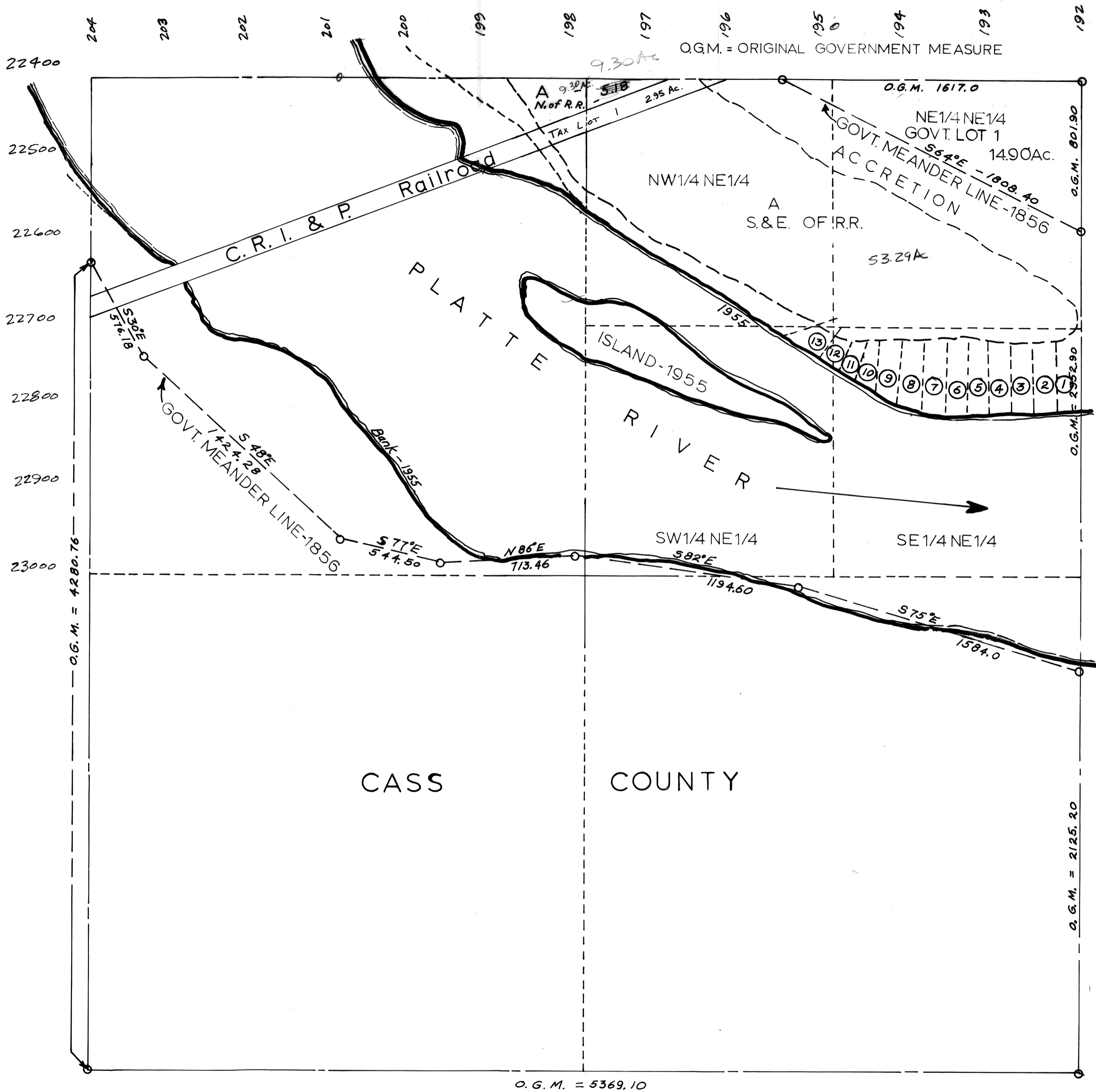


SEC. 19-T12N-R11E
Scale: 1" = 400'

1912-11



O.G.M. = ORIGINAL GOVERNMENT MEASURE

O.G.M. = ORIGINAL GOVERNMENT MEASURE

Sarpy County Surveyor's Office
February-1958

Revised January-1962

" MARCH-1977

3-25-86