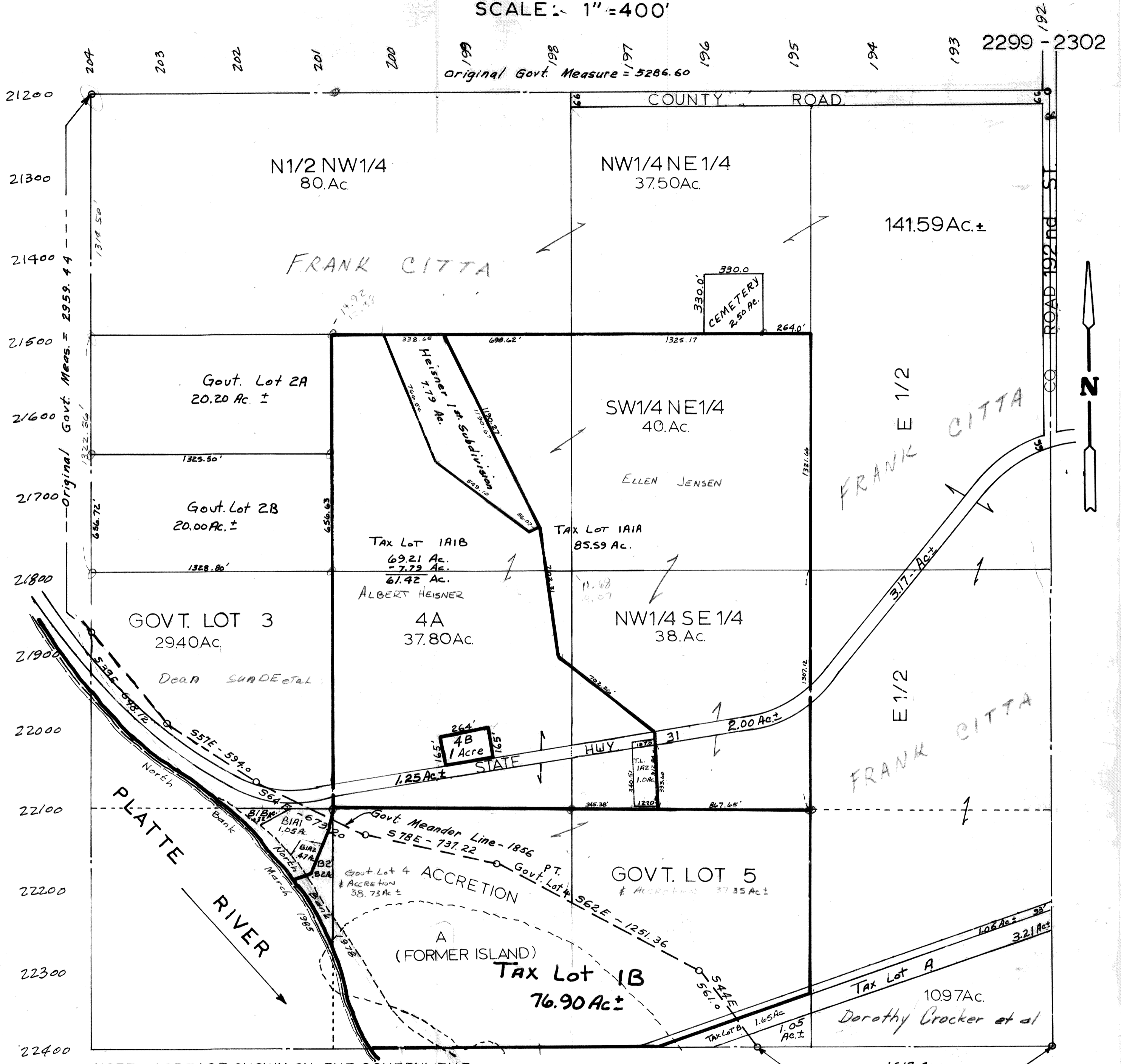


SEC. 18-T12N-R11E
SCALE: 1" = 400'



NOTE: ACREAGE SHOWN ON THE GOVERNMENT LOTS IN THIS SECTION ARE TAKEN FROM THE ORIGINAL GOVERNMENT SURVEY OF 1856

TAX LOT 1 BEING T.L.'S B2,4A, GL'S 4 & 5 NO. OF RR, SE 1/4 NW 1/4, SW 1/4 NE 1/4, NW 1/4 SE 1/4, COMBINED 232.70 AC. ±
T.L. A (FORMER ISLAND)
Ties for Corners marked by 70-10-32

SARPY COUNTY SURVEYOR'S OFFICE
OCTOBER - 1961
Revised JANUARY - 1962

- MARCH - 1977
- August - 1978
- October - 1981
- November - 1981
- March - 1984
- August - 1985
- March - 1986
- JANUARY - 1987
- March - 1990