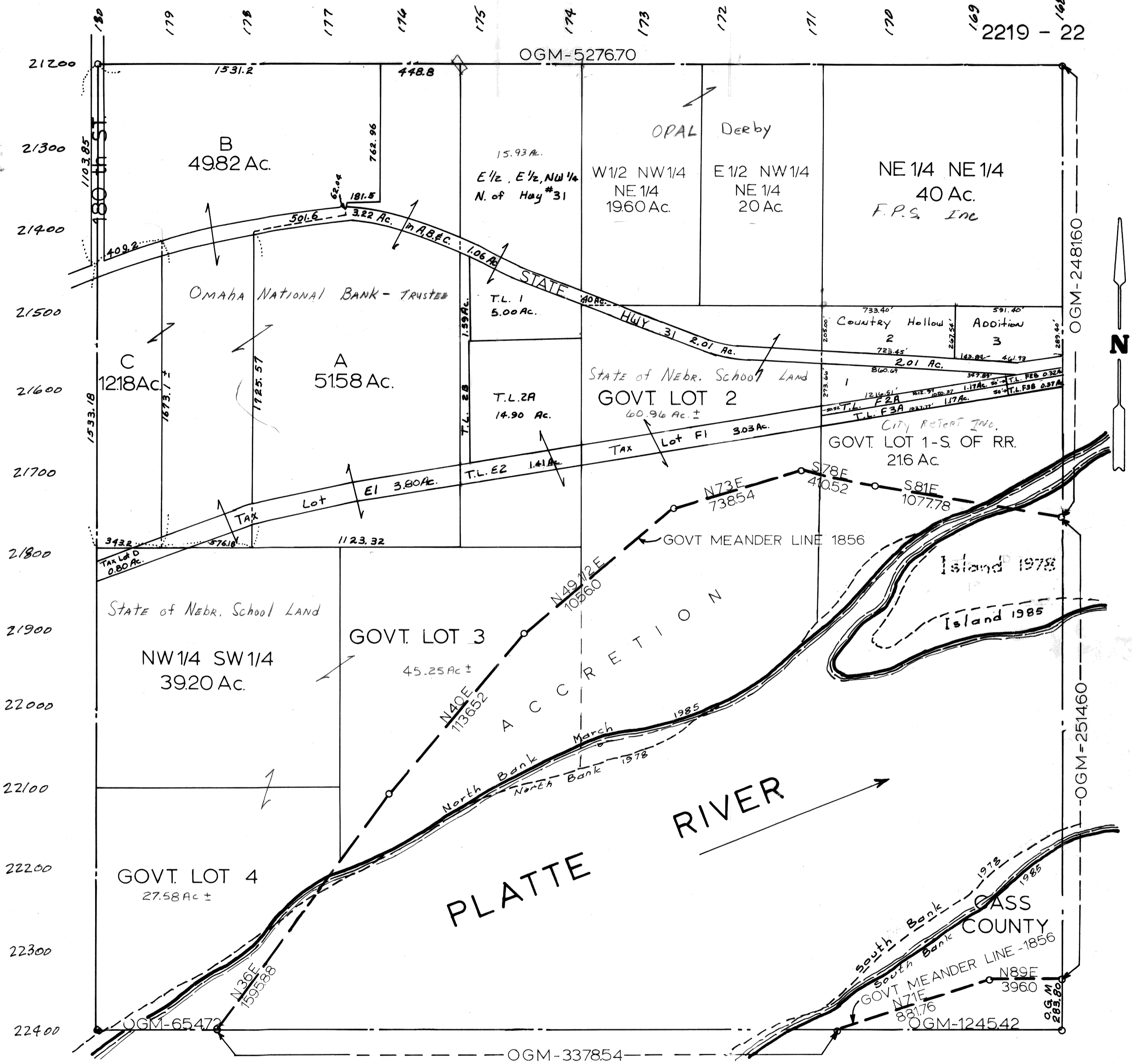


SEC.16·T12N·R11E
SCALE: 1" = 400'

12.3

2219 - 22



OGM=ORIGINAL GOVERNMENT MEASURE

SARPY COUNTY SURVEYOR'S OFFICE
MARCH 1958

Revised January 1962

- MARCH - 1977
- August - 1978
- August - 1985
- JANUARY - 1986
- MARCH - 1986

2043.70

17
15
15
15