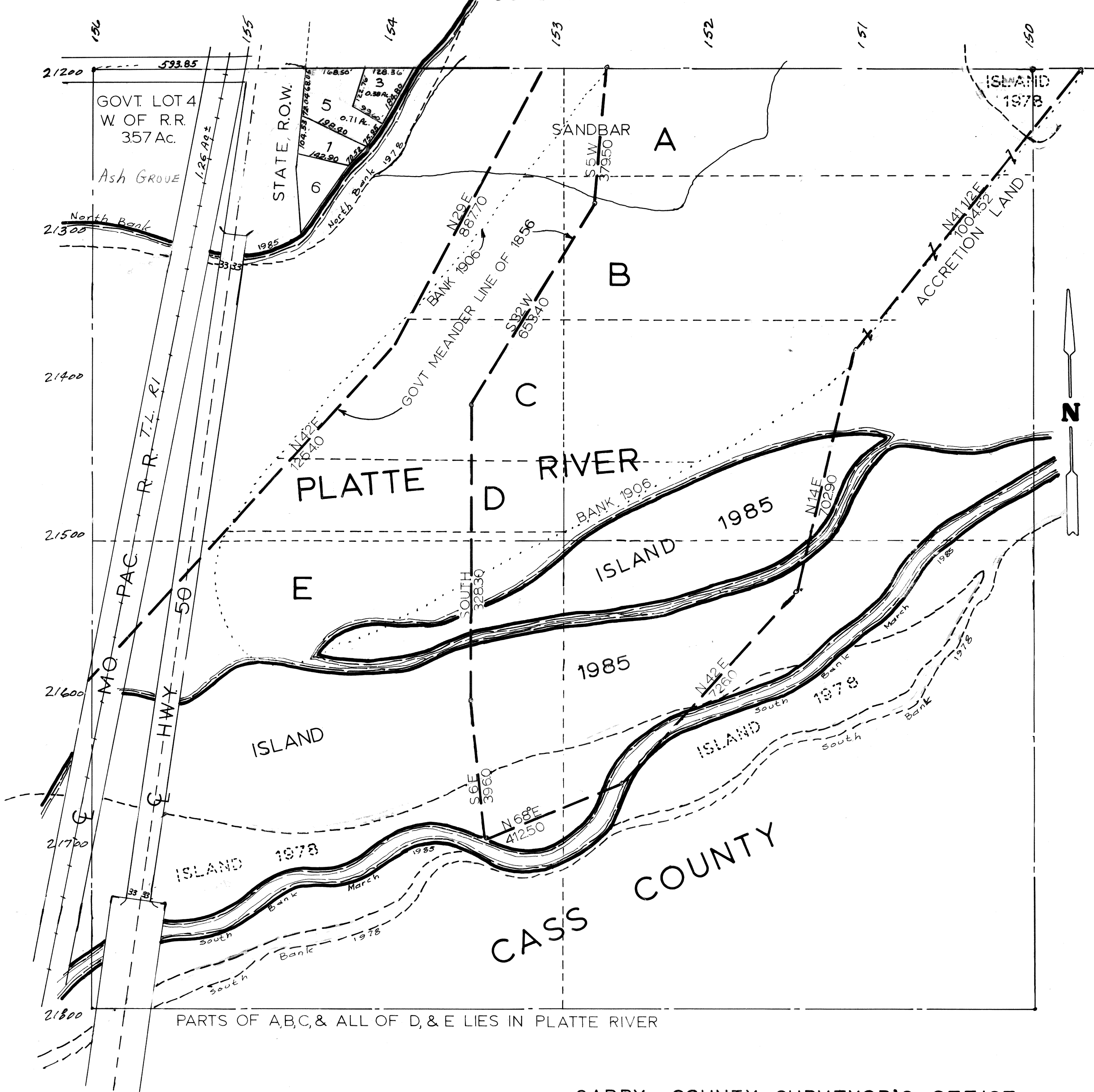


NW1/4 SEC.14-T12N-R11E

SCALE: 1" = 200'

2144



PARTS OF A,B,C, & ALL OF D, & E LIES IN PLATTE RIVER

SARPY COUNTY SURVEYOR'S OFFICE
MARCH - - 1959

Revised-January--1962

- " DECEMBER 1971
- " MARCH 1977
- " JANUARY 1978
- August - 1978
- May - 1984
- March - 1986