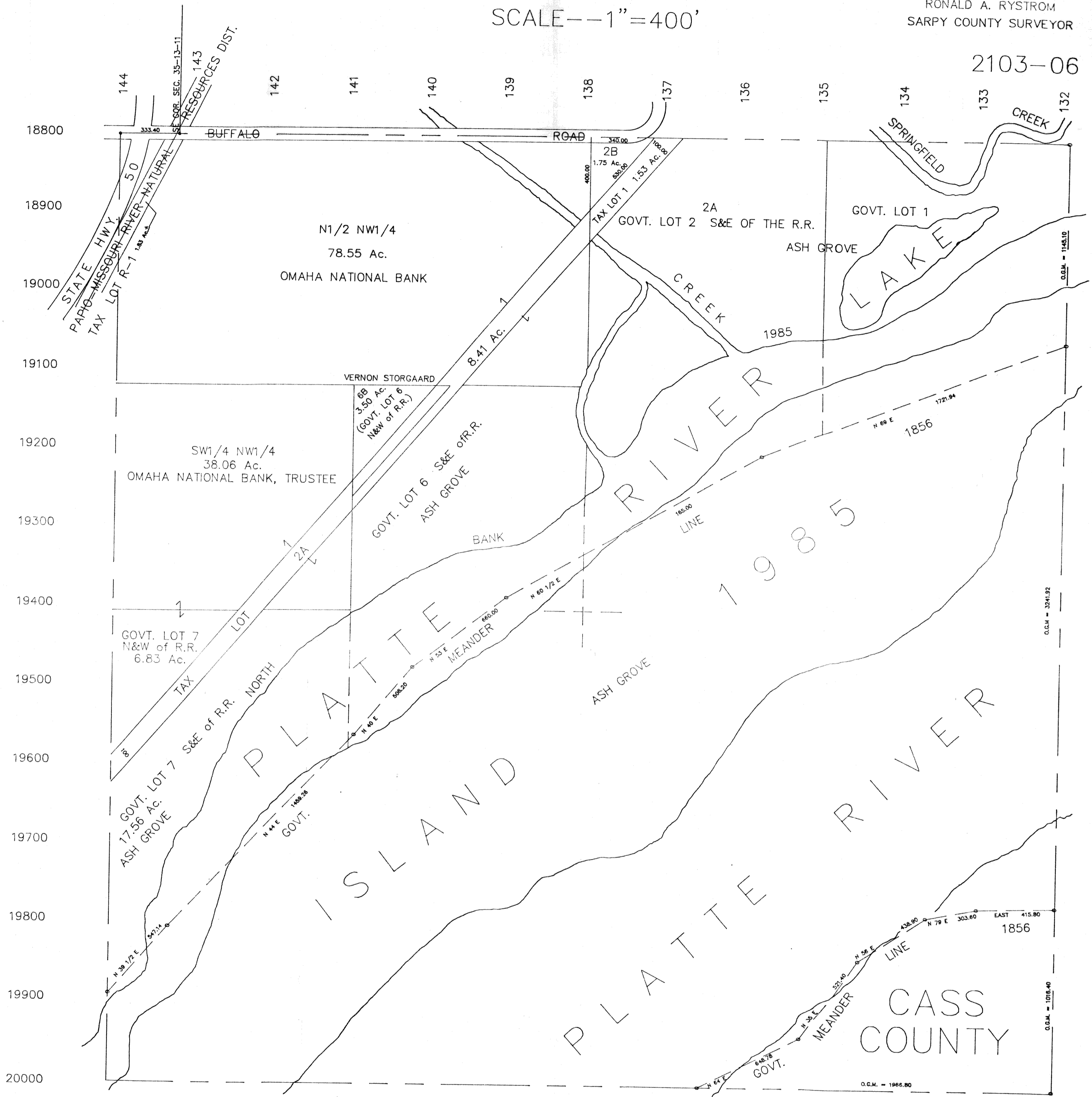


SEC. 1 T12N-R11E
SCALE--1"=400'

RONALD A. RYSTROM
SARPY COUNTY SURVEYOR

2103-06



O.G.M. = ORIGINAL GOVERNMENT MEASURE

SARPY COUNTY SURVEYOR
JANUARY--1962

REVISED

MARCH	1977
AUGUST	1978
AUGUST	1985
MARCH	1986
APRIL	1992