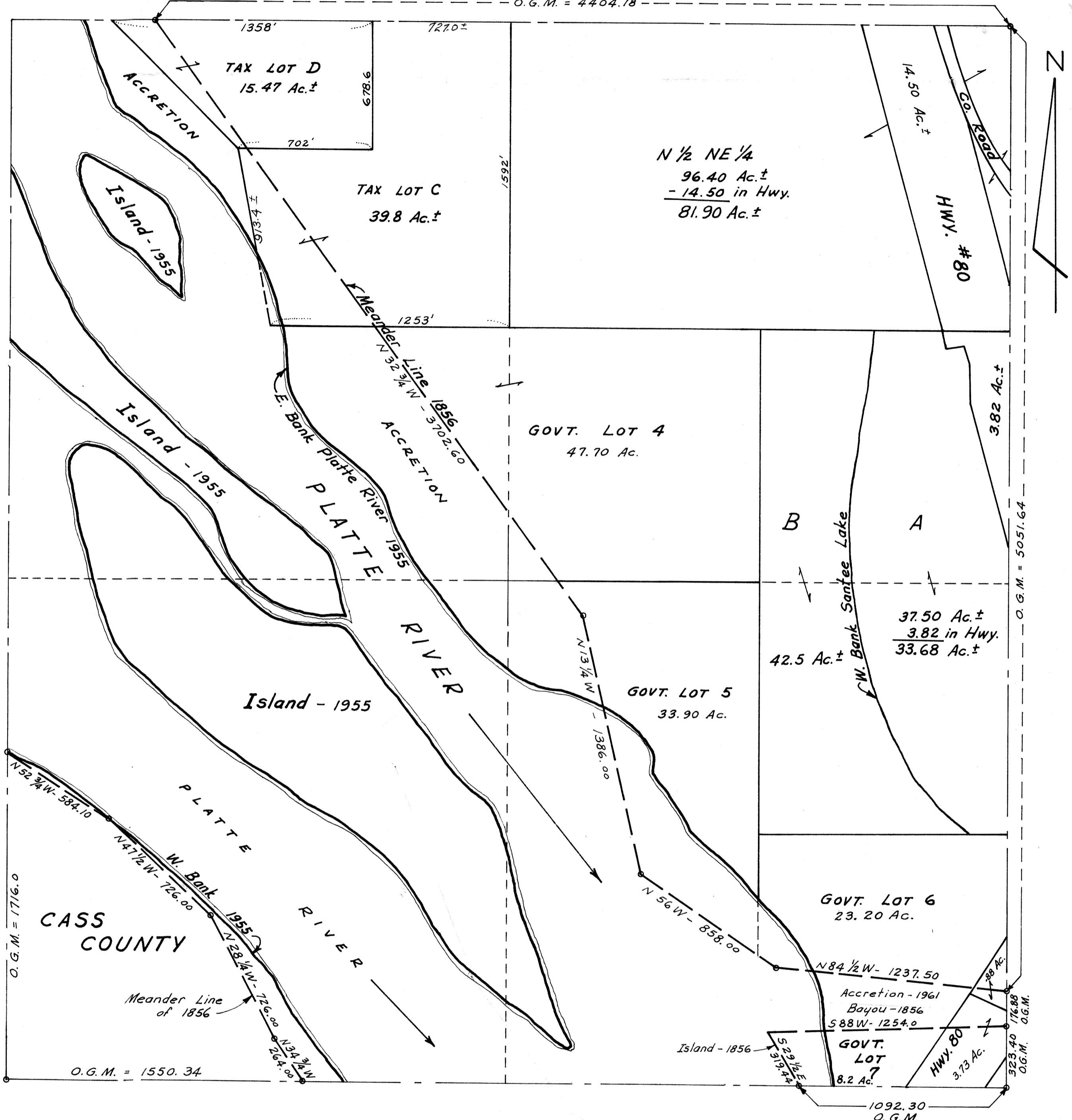


SEC. 4 - T 12N - R 10E

SCALE: 1 INCH = 400 FEET

O.G.M. = 4404.18



O.G.M. = Original Government Measure

NOTE: ACREAGES SHOWN ON THE GOVERNMENT LOTS IN THIS SECTION ARE TAKEN FROM THE ORIGINAL GOVERNMENT SURVEY OF 1856.

OFFICIAL PLAT
SARPY COUNTY SURVEYOR'S OFFICE

JANUARY, 1962

F. I. W. - N. P. W.