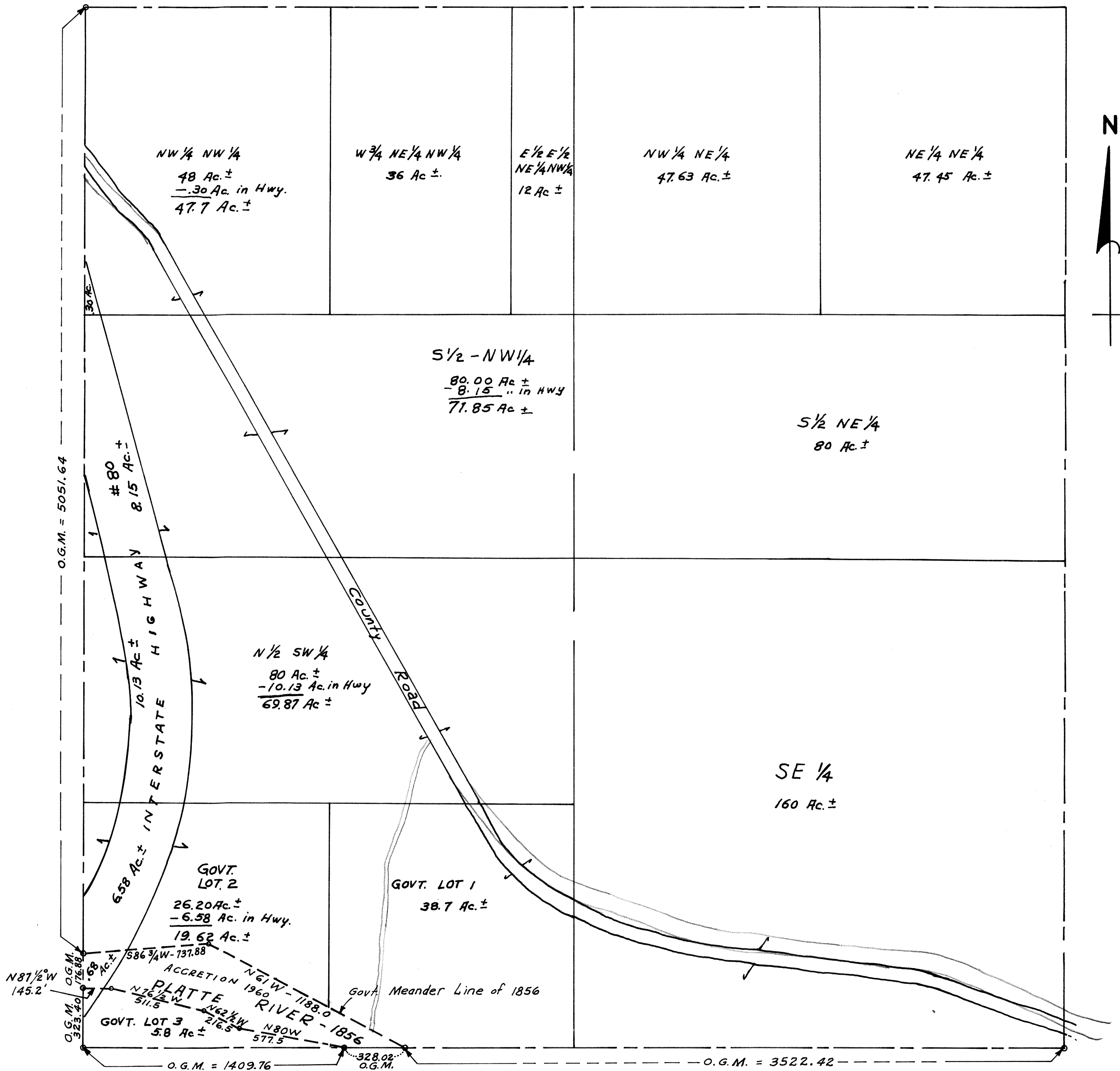


SEC. 3- T12N-R10E

scale. 1.inch=400 feet.



NOTE: ACREAGES AND BOUNDARIES OF GOVERNMENT LOTS 1,2, & 3 IN THIS SECTION ARE TAKEN FROM THE ORIGINAL GOVERNMENT SURVEY, HOWEVER AERIAL PHOTOGRAPHS TAKEN IN JULY 1955 INDICATE THAT THE PLATTE RIVER HAS SHIFTED SOUTHWARD LEAVING CONSIDERABLE ACCRETION LAND IN THIS SECTION.

O.G.M. = Original Government Measure

OFFICIAL PLAT  
 SАРY COUNTY SURVEYOR'S OFFICE  
 JANUARY-1958  
 F. I. W. - N. P. W.  
 REVISED - - NOV. 1960.