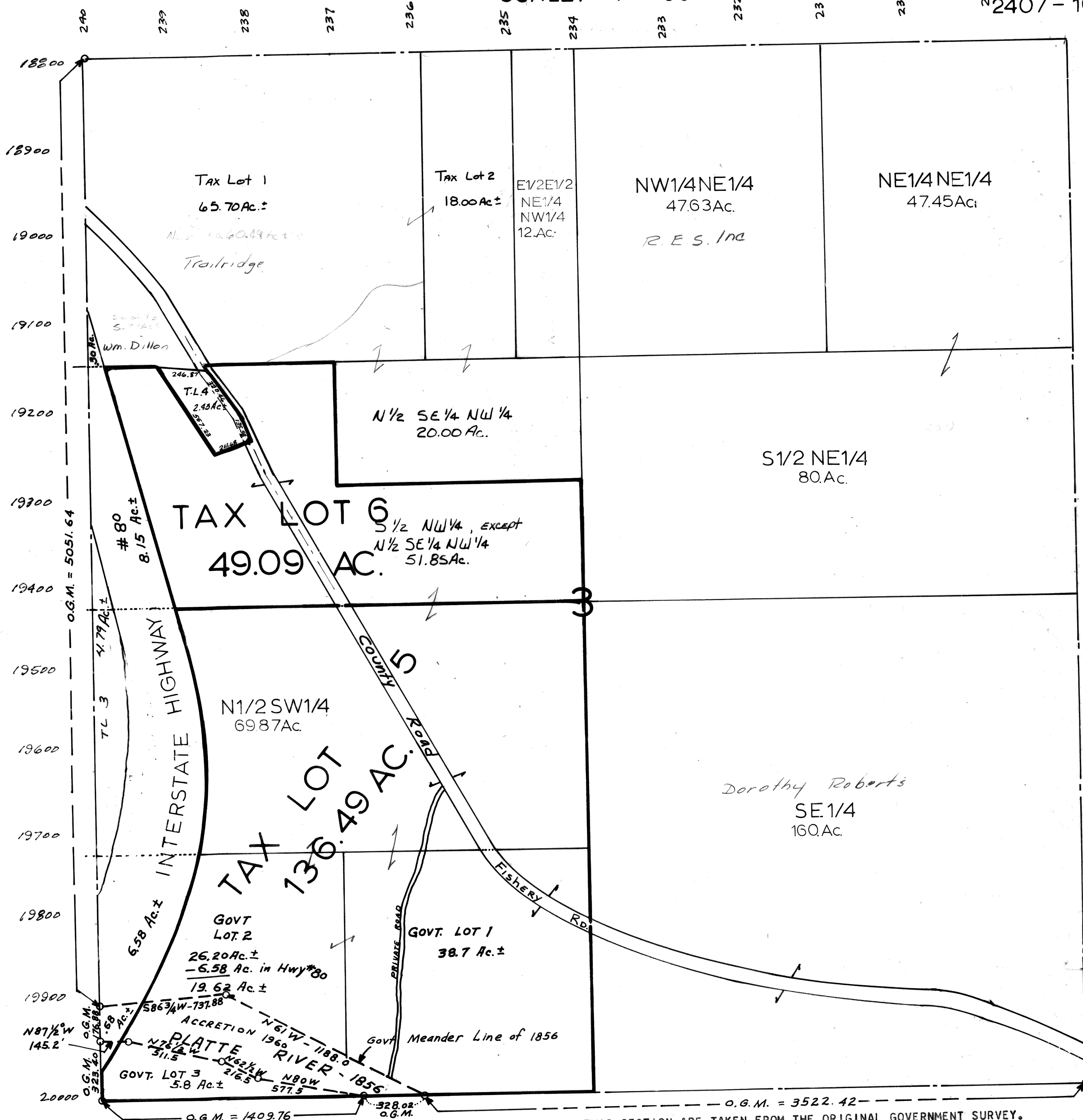


SEC. 3-T12N-R10E  
SCALE: 1"=400'

2407-10



18800  
18900  
19000  
19100  
19200  
19300  
19400  
19500  
19600  
19700  
19800  
19900  
20000

240 239 238 237 236 235 234 233 232 231 230 229 228

O.G.M. = 5051.64  
O.G.M. = 1409.76  
O.G.M. = 3522.42

NOTE: ACREAGES AND BOUNDARIES OF GOVERNMENT LOTS 1-2 & 3 IN THIS SECTION ARE TAKEN FROM THE ORIGINAL GOVERNMENT SURVEY. HOWEVER AERIAL PHOTOGRAPHS TAKEN IN JULY 1955 INDICATE THAT THE PLATTE RIVER HAS SHIFTED SOUTHWARDLY LEAVING CONSIDERABLE ACCRETION LAND IN THIS SECTION.

O.G.M. = Original Government Measure

SARPY COUNTY SURVEYOR'S OFFICE  
JANUARY - 1958  
Revised-NOVEMBER-1960  
MARCH 1977  
Feb. 1983  
12-06-04-42895