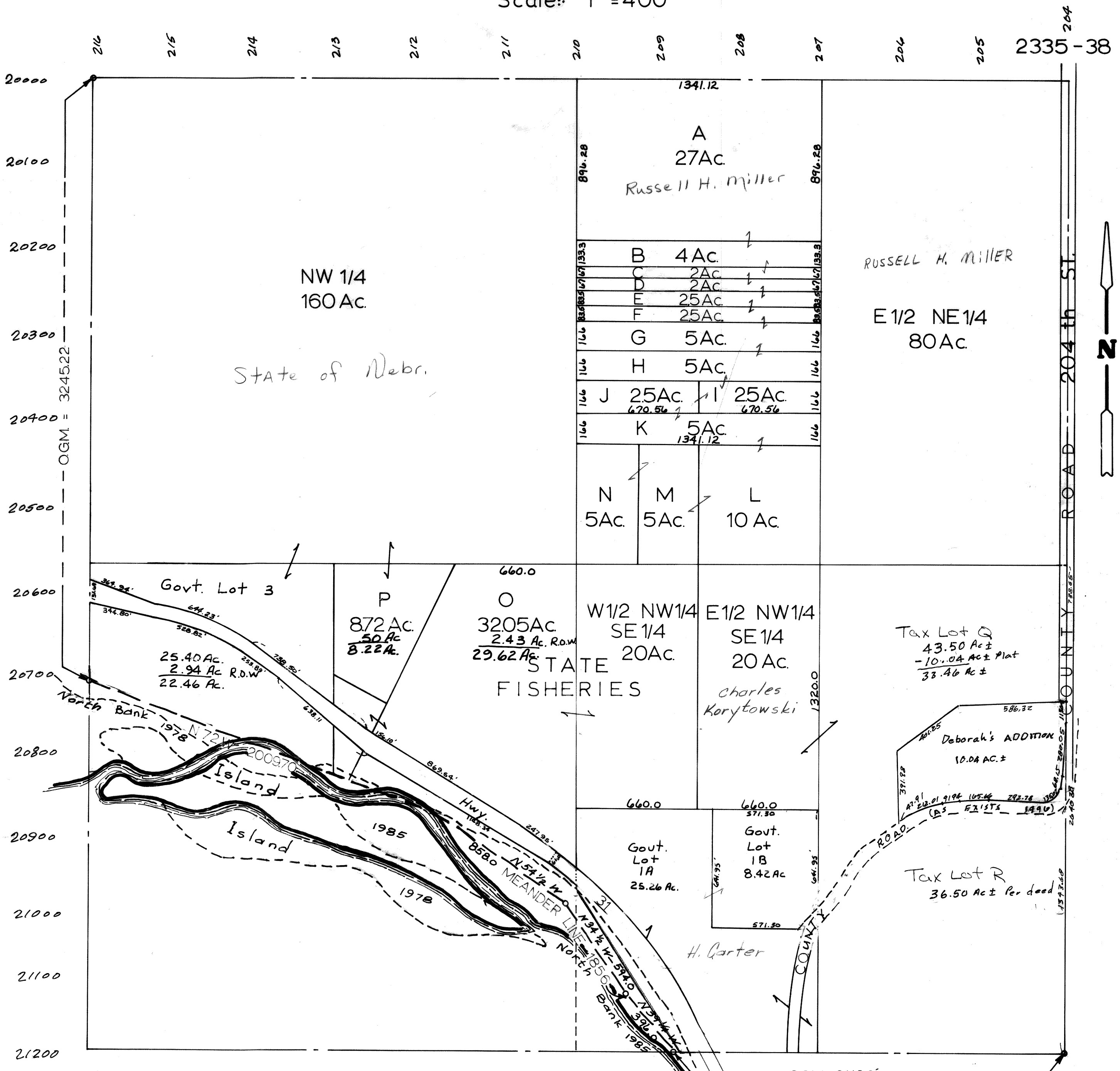


SEC. 12 - T12N-R10E
Scale: 1" = 400'



OGM=ORIGINAL GOVERNMENT MEASURE.
NOTE: ACREAGE SHOWN ON THE GOVERNMENT LOTS IN THIS SECTION ARE TAKEN FROM THE ORIGINAL GOVERNMENT SURVEY OF 1856.

Sarpy County Surveyor's Office
January 1962
REVISED - MARCH - 1977
August - 1978
July 1981
Dec. 1985
3 - 25 - 86
7 - 17 - 96 - 13920
3 - 31 - 97 Plat