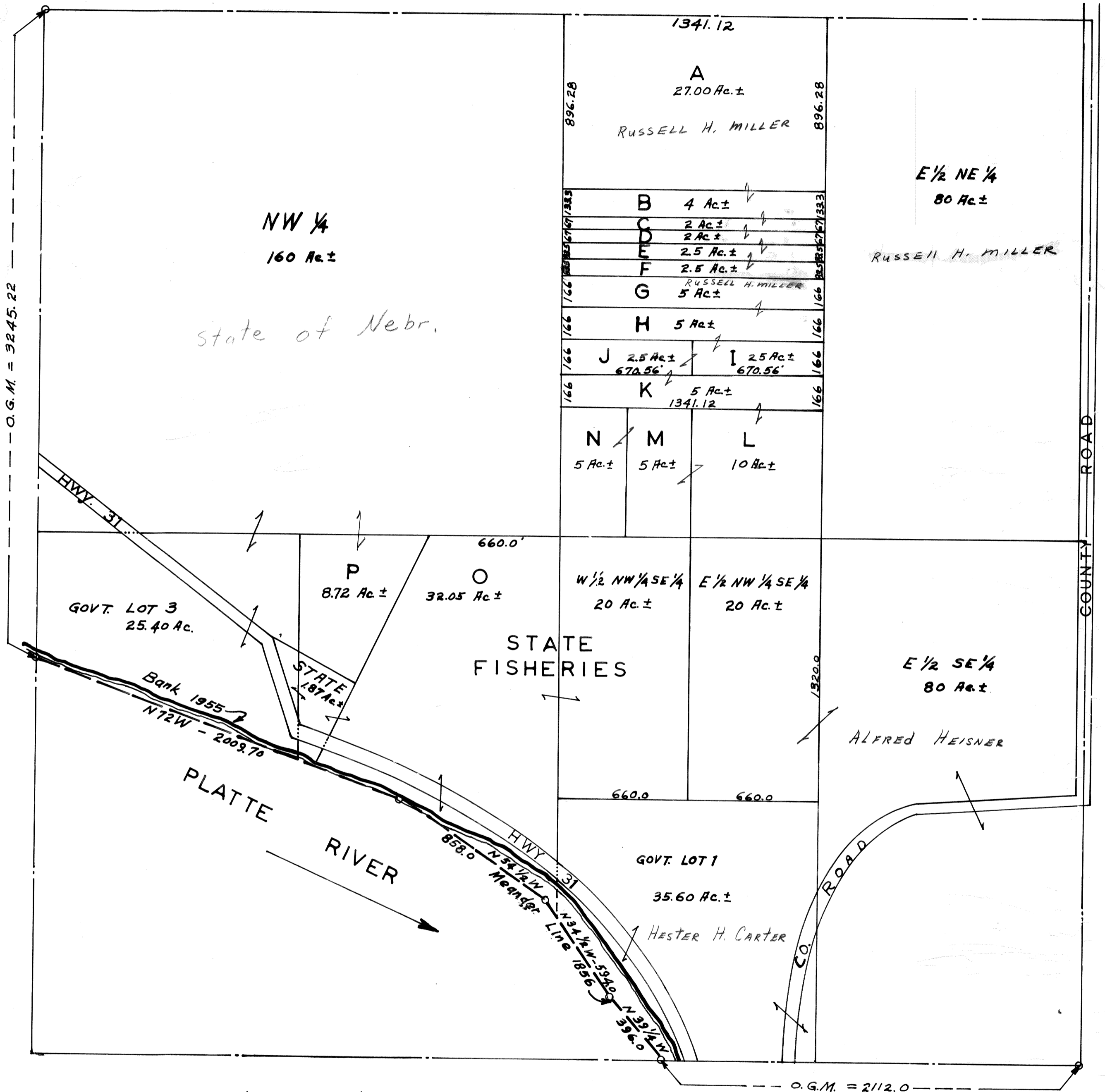


SEC. 12-T12N-R10E
Scale: 1" = 400'



O.G.M. = Original Government Measure

NOTE: ACREAGE SHOWN ON THE GOVERNMENT LOTS IN THIS SECTION ARE TAKEN FROM THE ORIGINAL GOVERNMENT SURVEY OF 1856

Sarpy County Surveyor's Office
January 1962