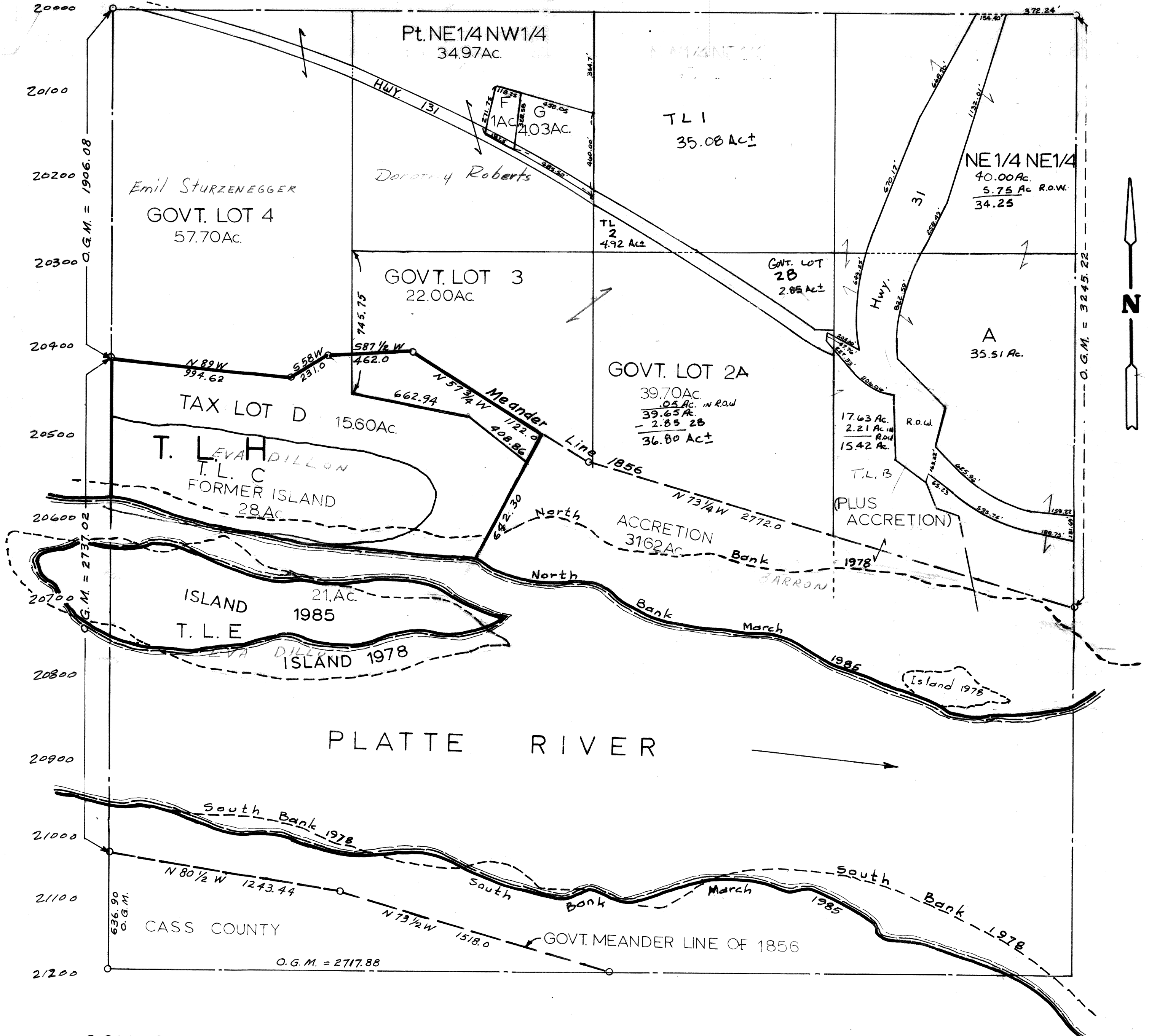


SEC. 11-T12N-R10E

scale: 1" = 400'

2375 - 78



O.G.M. ORIGINAL GOVT. MEASURE
 NOTE: Acreeages Shown On The Government Lots In This
 Section Are Taken From The Original Government
 Survey Of 1856

Sarpy County Surveyor's Office
 January - 1962

REVISED - MARCH - 1977
 August - 1978
 3-21-86
 12-31-02-53297