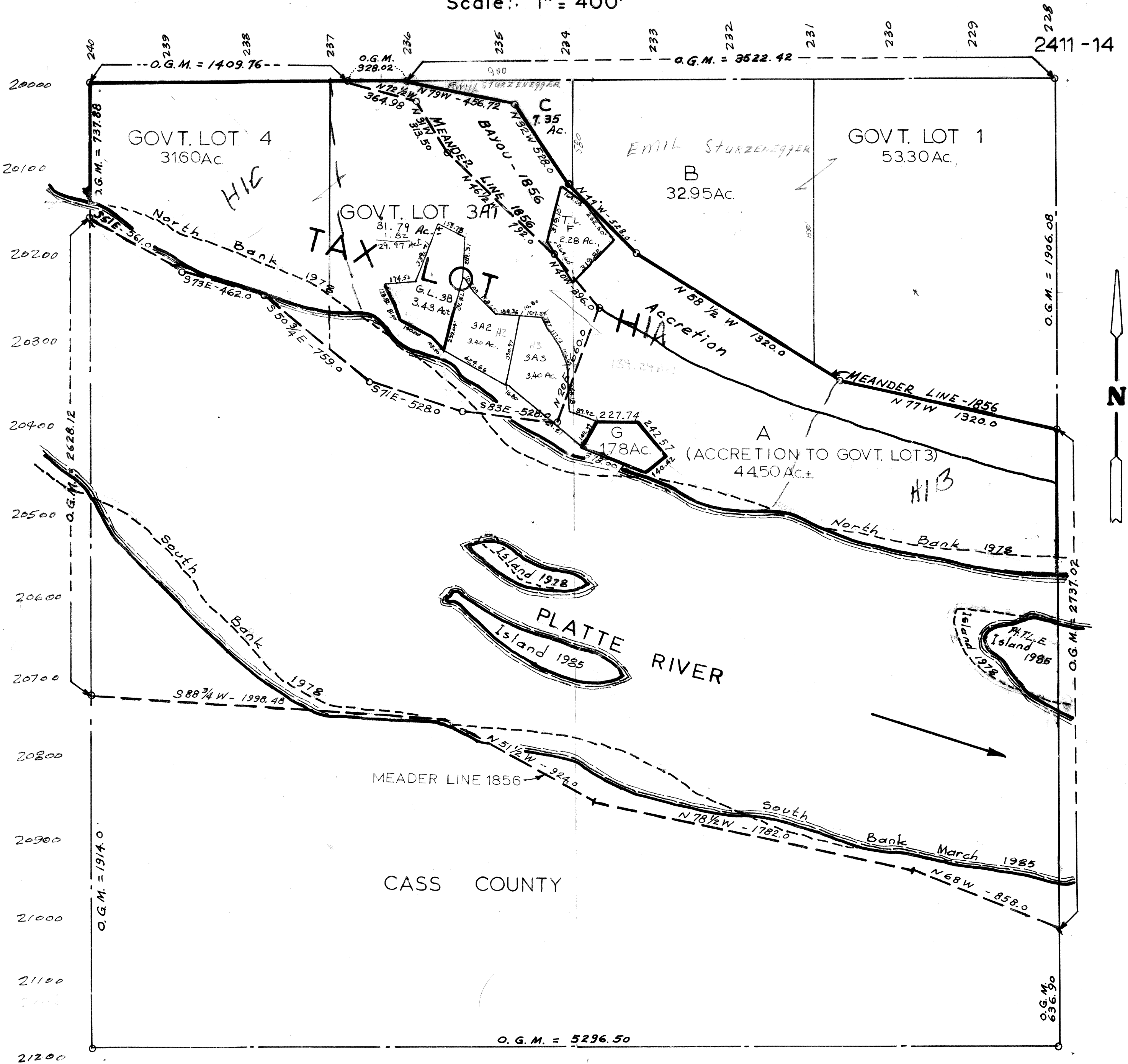


SECTION 10 · T 12 N · R 10 E

Scale: 1" = 400'



O.G.M. = Original Government Measure

SARPY COUNTY SURVEYOR'S OFFICE  
JANUARY 1958

NOTE: - ACREAGES SHOWN ON THE LOTS IN THIS SECTION ARE TAKEN FROM THE ORIGINAL GOVERNMENT SURVEY OF 1856.

Revised January 1962

MARCH 1977  
August - 1978

3-21-86

8-8-94

12-2-94