

NEBRASKA DOCUMENTARY
STATE TAX
AUG 12 2015
\$126.58 BY

DOH CLARK
REGISTER OF DEEDS
SAUNDERS CO. NEBR
2015 AUG 12 P 2:29
BOOK 465 PAGE 1068
OF GEN INSTA 120

[Handwritten initials]

QUITCLAIM DEED

Sandy Pointe Lake Development, LLC, a Nebraska limited liability company, GRANTOR, in consideration of One Dollar (\$1.00) and other good and valuable consideration received from GRANTEE, SANDY POINTE LAKE HOMEOWNERS ASSOCIATION, INC., quitclaims to GRANTEE, SANDY POINTE LAKE HOMEOWNERS ASSOCIATION, INC., a Nebraska corporation, the following described real estate:

Outlot H Sandy Pointe Lake Development Addition, Saunders County, Nebraska, and Sandy Pointe Lake as described on Exhibit A.

EXECUTED this 11th day of August, 2015.

BIG SANDY DEVELOPMENT COMPANY,
LLC, A Nebraska Limited Liability Company

[Signature]

Dan Muhleisen, Manager

STATE OF NEBRASKA)
) ss.
COUNTY OF LANCASTER.)

120
1

The foregoing instrument was acknowledged before me on August 11th, 2015, by Dan Muhleisen, Manager of Sandy Pointe Lake Development, LLC, a Nebraska limited liability company, to me known to be the identical person whose name is affixed to the foregoing instrument and acknowledged the execution thereof to be his voluntary act and deed and the voluntary act and deed of said company.

Notary Public
My commission expires:

BRYCE PENKE
General Notary, State of Nebraska
My Commission Expires
November 14, 2018

[Signature]

**LEGAL DESCRIPTION
SANDY POINTE LAKE**

A TRACT OF LAND COMPOSED OF OUTLOTS "A" AND "B", SANDY POINTE LAKE DEVELOPMENT ADDITION, A PORTION OF OUTLOT "S", SANDY POINTE LAKE DEVELOPMENT ADDITION, A PORTION OF THE EAST HALF OF SECTION 13, TOWNSHIP 13 NORTH, RANGE 9 EAST OF THE 6TH P.M., A PORTION OF THE EAST HALF OF SECTION 24, TOWNSHIP 13 NORTH, RANGE 9 EAST OF THE 6TH P.M., A PORTION OF THE NORTHEAST QUARTER OF THE NORTHEAST QUARTER OF SECTION 25, TOWNSHIP 13 NORTH, RANGE 9 EAST OF THE 6TH P.M., A PORTION OF THE WEST HALF OF THE WEST HALF OF SECTION 18, TOWNSHIP 13 NORTH, RANGE 10 EAST OF THE 6TH P.M., A PORTION OF THE WEST HALF OF THE WEST HALF OF SECTION 19, TOWNSHIP 13 NORTH, RANGE 10 EAST OF THE 6TH P.M., AND A PORTION OF THE NORTHWEST QUARTER OF THE NORTHWEST QUARTER OF SECTION 30, TOWNSHIP 13 NORTH, RANGE 10 EAST OF THE 6TH P.M., ALL IN SAUNDERS COUNTY, NEBRASKA, AND MORE PARTICULARLY DESCRIBED AS FOLLOWS:

COMMENCING AT THE NORTHWEST CORNER OF THE SOUTHWEST QUARTER OF THE NORTHEAST QUARTER OF SECTION 13, TOWNSHIP 13 NORTH, RANGE 9 EAST OF THE 6TH P.M.; THENCE EASTERLY ON THE NORTH LINE OF SOUTH HALF OF THE NORTHEAST QUARTER OF SAID SECTION 13 ON AN ASSUMED BEARING OF N87°21'42"E, A DISTANCE OF 2,648.41' TO THE NORTHEAST CORNER OF THE SOUTHWEST QUARTER OF THE NORTHEAST QUARTER OF SAID SECTION 13; THENCE S02°20'13"E, A DISTANCE OF 108.03' TO THE TRUE POINT OF BEGINNING; THENCE N83°18'39"E, A DISTANCE OF 0.39' TO A POINT; THENCE N87°27'28"E, A DISTANCE OF 519.34' TO A POINT; THENCE S60°45'44"E, A DISTANCE OF 48.82' TO A POINT; THENCE S64°31'27"E, A DISTANCE OF 78.88' TO A POINT; THENCE S60°50'06"E, A DISTANCE OF 99.20' TO A POINT; THENCE S40°15'26"E, A DISTANCE OF 313.90' TO A POINT; THENCE S29°48'34"E, A DISTANCE OF 117.65' TO A POINT; THENCE S16°51'04"E, A DISTANCE OF 92.10' TO A POINT; THENCE S13°58'10"E, A DISTANCE OF 137.65' TO A POINT; THENCE S08°08'01"E, A DISTANCE OF 81.63' TO A POINT; THENCE S00°14'54"E, A DISTANCE OF 149.72' TO A POINT; THENCE S09°12'55"W, A DISTANCE OF 81.14' TO A POINT; THENCE S14°47'21"W, A DISTANCE OF 146.43' TO A POINT; THENCE S29°09'54"W, A DISTANCE OF 41.92' TO A POINT; THENCE S23°14'39"W, A DISTANCE OF 86.45' TO A POINT; THENCE S18°18'04"E, A DISTANCE OF 13.82' TO A POINT; THENCE S16°05'19"W, A DISTANCE OF 30.23' TO A POINT; THENCE S22°25'06"W, A DISTANCE OF 81.84' TO A POINT; THENCE S07°39'15"E, A DISTANCE OF 48.78' TO A POINT; THENCE S20°23'06"E, A DISTANCE OF 53.88' TO A POINT; THENCE S22°52'05"E, A DISTANCE OF 79.87' TO A POINT; THENCE S06°03'25"E, A DISTANCE OF 47.89' TO A POINT; THENCE S12°25'53"W, A DISTANCE OF 43.59' TO A POINT; THENCE S00°00'00"E, A DISTANCE OF 69.99' TO A POINT; THENCE S06°04'50"E, A DISTANCE OF 114.23' TO A POINT; THENCE S51°23'44"E, A DISTANCE OF 109.18' TO A POINT; THENCE S27°13'33"E, A DISTANCE OF 92.06' TO A POINT; THENCE S13°56'45"E, A DISTANCE OF 190.82' TO A POINT; THENCE S05°36'39"E, A DISTANCE OF 77.01' TO A POINT; THENCE S12°39'20"E, A DISTANCE OF 55.48' TO A POINT; THENCE S12°27'41"W, A DISTANCE OF 71.03' TO A POINT; THENCE

120
2

S31°00'26"W, A DISTANCE OF 23.24' TO A POINT; THENCE S06°24'01"W, A DISTANCE OF 92.49' TO A POINT; THENCE S41°44'01"W, A DISTANCE OF 205.16' TO A POINT; THENCE S49°53'51"W, A DISTANCE OF 45.94' TO A POINT; THENCE S11°27'58"E, A DISTANCE OF 81.86' TO A POINT; THENCE S05°50'30"W, A DISTANCE OF 56.33' TO A POINT; THENCE S13°03'42"E, A DISTANCE OF 33.21' TO A POINT; THENCE S15°32'42"W, A DISTANCE OF 85.36' TO A POINT; THENCE S11°06'17"W, A DISTANCE OF 64.87' TO A POINT; THENCE S20°29'44"E, A DISTANCE OF 82.55' TO A POINT; THENCE S01°11'21"E, A DISTANCE OF 387.13' TO A POINT; THENCE S24°09'35"E, A DISTANCE OF 54.71' TO A POINT; THENCE S04°42'03"E, A DISTANCE OF 83.62' TO A POINT; THENCE N60°33'11"E, A DISTANCE OF 70.82' TO A POINT; THENCE S50°12'27"E, A DISTANCE OF 28.98' TO A POINT; THENCE S23°23'13"W, A DISTANCE OF 77.61' TO A POINT; THENCE S04°29'51"W, A DISTANCE OF 32.62' TO A POINT; THENCE S22°08'03"E, A DISTANCE OF 54.43' TO A POINT; THENCE S03°50'11"W, A DISTANCE OF 16.72' TO A POINT; THENCE S31°18'45"E, A DISTANCE OF 22.96' TO A POINT; THENCE S13°34'38"W, A DISTANCE OF 36.16' TO A POINT; THENCE S15°19'16"E, A DISTANCE OF 46.66' TO A POINT; THENCE S13°24'49"W, A DISTANCE OF 19.99' TO A POINT; THENCE N86°41'17"W, A DISTANCE OF 21.53' TO A POINT; THENCE N33°29'19"W, A DISTANCE OF 33.62' TO A POINT; THENCE N08°04'02"W, A DISTANCE OF 31.44' TO A POINT; THENCE N07°58'55"E, A DISTANCE OF 33.36' TO A POINT; THENCE N22°58'03"W, A DISTANCE OF 17.68' TO A POINT; THENCE S36°56'06"W, A DISTANCE OF 44.44' TO A POINT; THENCE S00°35'44"W, A DISTANCE OF 33.16' TO A POINT; THENCE S12°17'08"E, A DISTANCE OF 57.40' TO A POINT; THENCE S03°04'52"W, A DISTANCE OF 86.57' TO A POINT; THENCE S12°34'57"W, A DISTANCE OF 91.74' TO A POINT; THENCE S32°37'16"E, A DISTANCE OF 55.31' TO A POINT; THENCE S03°14'05"W, A DISTANCE OF 112.88' TO A POINT; THENCE S10°32'38"E, A DISTANCE OF 75.93' TO A POINT; THENCE S09°44'26"W, A DISTANCE OF 35.87' TO A POINT; THENCE S15°32'19"E, A DISTANCE OF 61.89' TO A POINT; THENCE S06°12'52"W, A DISTANCE OF 71.41' TO A POINT; THENCE S14°18'43"E, A DISTANCE OF 37.50' TO A POINT; THENCE S07°11'22"W, A DISTANCE OF 42.12' TO A POINT; THENCE S31°56'50"E, A DISTANCE OF 52.59' TO A POINT; THENCE S08°53'45"W, A DISTANCE OF 72.86' TO A POINT; THENCE S16°39'03"E, A DISTANCE OF 57.76' TO A POINT; THENCE S01°20'06"W, A DISTANCE OF 91.20' TO A POINT; THENCE S18°13'30"W, A DISTANCE OF 77.46' TO A POINT; THENCE S10°05'17"E, A DISTANCE OF 183.56' TO A POINT; THENCE S02°27'00"E, A DISTANCE OF 92.90' TO A POINT; THENCE S20°57'05"W, A DISTANCE OF 50.73' TO A POINT; THENCE S00°42'43"E, A DISTANCE OF 47.08' TO A POINT; THENCE S26°12'58"E, A DISTANCE OF 74.11' TO A POINT; THENCE S02°17'14"E, A DISTANCE OF 191.62' TO A POINT; THENCE S33°40'33"W, A DISTANCE OF 45.75' TO A POINT; THENCE S42°03'41"W, A DISTANCE OF 81.42' TO A POINT; THENCE S33°43'51"E, A DISTANCE OF 18.35' TO A POINT; THENCE S76°47'35"E, A DISTANCE OF 43.60' TO A POINT; THENCE S01°28'30"E, A DISTANCE OF 108.02' TO A POINT; THENCE S13°05'23"E, A DISTANCE OF 86.22' TO A POINT; THENCE S00°18'40"W, A DISTANCE OF 108.10' TO A POINT; THENCE S03°44'19"W, A DISTANCE OF 86.15' TO A POINT; THENCE S01°29'53"E, A DISTANCE OF 147.16' TO A POINT; THENCE S07°44'14"W, A DISTANCE OF 24.12' TO A POINT; THENCE S09°24'31"E, A DISTANCE OF 52.41' TO A POINT; THENCE S04°07'49"W, A DISTANCE OF 45.05' TO A POINT; THENCE S15°08'09"E, A DISTANCE OF 93.91' TO A POINT; THENCE S00°14'13"W, A DISTANCE OF 71.42' TO A POINT; THENCE S36°26'28"E, A DISTANCE OF 29.84'

20
3

TO A POINT; THENCE S06°52'43"W, A DISTANCE OF 50.66' TO A POINT; THENCE S20°10'25"E, A DISTANCE OF 26.25' TO A POINT; THENCE S00°44'35"W, A DISTANCE OF 62.95' TO A POINT; THENCE S07°47'48"W, A DISTANCE OF 89.64' TO A POINT; THENCE S15°11'12"E, A DISTANCE OF 39.69' TO A POINT; THENCE S02°20'09"W, A DISTANCE OF 188.98' TO A POINT; THENCE S02°43'29"W, A DISTANCE OF 116.46' TO A POINT; THENCE S04°43'59"E, A DISTANCE OF 138.43' TO A POINT; THENCE S10°53'59"W, A DISTANCE OF 93.13' TO A POINT; THENCE S01°24'51"E, A DISTANCE OF 77.82' TO A POINT; THENCE S07°45'42"E, A DISTANCE OF 179.66' TO A POINT; THENCE S03°49'10"W, A DISTANCE OF 74.36' TO A POINT; THENCE S23°09'54"W, A DISTANCE OF 141.36' TO A POINT; THENCE S29°07'21"E, A DISTANCE OF 166.08' TO A POINT; THENCE S08°55'07"W, A DISTANCE OF 264.06' TO A POINT; THENCE S54°12'07"W, A DISTANCE OF 136.12' TO A POINT; THENCE S71°02'45"W, A DISTANCE OF 50.43' TO A POINT; THENCE S53°08'34"W, A DISTANCE OF 50.66' TO A POINT; THENCE S18°18'39"E, A DISTANCE OF 61.52' TO A POINT; THENCE S62°21'13"E, A DISTANCE OF 51.07' TO A POINT; THENCE S32°20'23"E, A DISTANCE OF 45.96' TO A POINT; THENCE S14°28'47"E, A DISTANCE OF 63.33' TO A POINT; THENCE S00°30'25"W, A DISTANCE OF 203.57' TO A POINT; THENCE S14°54'41"W, A DISTANCE OF 161.30' TO A POINT; THENCE S00°47'56"E, A DISTANCE OF 84.95' TO A POINT; THENCE S25°20'24"E, A DISTANCE OF 133.47' TO A POINT; THENCE S14°13'29"W, A DISTANCE OF 133.79' TO A POINT; THENCE S13°00'01"E, A DISTANCE OF 102.52' TO A POINT; THENCE S24°59'48"W, A DISTANCE OF 34.47' TO A POINT; THENCE S03°31'29"W, A DISTANCE OF 143.39' TO A POINT; THENCE S17°21'01"E, A DISTANCE OF 36.99' TO A POINT; THENCE S37°45'06"E, A DISTANCE OF 44.04' TO A POINT; THENCE S02°46'00"W, A DISTANCE OF 29.21' TO A POINT; THENCE S20°47'44"W, A DISTANCE OF 45.02' TO A POINT; THENCE S04°02'13"E, A DISTANCE OF 56.97' TO A POINT; THENCE S08°17'54"E, A DISTANCE OF 87.93' TO A POINT; THENCE S70°42'33"W, A DISTANCE OF 43.69' TO A POINT; THENCE N30°16'29"W, A DISTANCE OF 78.95' TO A POINT; THENCE N21°04'16"W, A DISTANCE OF 39.08' TO A POINT; THENCE N24°51'36"W, A DISTANCE OF 51.97' TO A POINT; THENCE N21°37'28"E, A DISTANCE OF 22.05' TO A POINT; THENCE N33°34'02"W, A DISTANCE OF 22.74' TO A POINT; THENCE N71°30'47"W, A DISTANCE OF 48.18' TO A POINT; THENCE N89°30'07"W, A DISTANCE OF 66.75' TO A POINT; THENCE S07°23'22"W, A DISTANCE OF 21.08' TO A POINT; THENCE S59°32'45"E, A DISTANCE OF 10.90' TO A POINT; THENCE S15°32'47"W, A DISTANCE OF 392.86' TO A POINT; THENCE S48°05'37"W, A DISTANCE OF 159.75' TO A POINT; THENCE N07°14'56"W, A DISTANCE OF 131.05' TO A POINT; THENCE N07°46'17"E, A DISTANCE OF 495.57' TO A POINT; THENCE N41°33'04"W, A DISTANCE OF 276.84' TO A POINT; THENCE N78°59'55"W, A DISTANCE OF 166.45' TO A POINT; THENCE S75°06'31"W, A DISTANCE OF 160.35' TO A POINT; THENCE S44°17'06"W, A DISTANCE OF 291.94' TO A POINT; THENCE S06°53'00"E, A DISTANCE OF 575.28' TO A POINT; THENCE S68°58'01"W, A DISTANCE OF 219.55' TO A POINT; THENCE N24°50'59"W, A DISTANCE OF 52.25' TO A POINT; THENCE N44°03'08"W, A DISTANCE OF 60.36' TO A POINT; THENCE N37°14'01"W, A DISTANCE OF 29.65' TO A POINT; THENCE N13°04'35"W, A DISTANCE OF 102.76' TO A POINT; THENCE N08°08'54"W, A DISTANCE OF 40.60' TO A POINT; THENCE N41°46'33"W, A DISTANCE OF 95.47' TO A POINT; THENCE N04°43'23"W, A DISTANCE OF 129.48' TO A POINT; THENCE N17°30'31"W, A DISTANCE OF 132.06' TO A POINT; THENCE N14°25'54"W, A DISTANCE OF

131.77' TO A POINT; THENCE N22°04'07"E, A DISTANCE OF 33.70' TO A POINT;
THENCE N03°27'06"W, A DISTANCE OF 135.05' TO A POINT; THENCE
N05°27'27"W, A DISTANCE OF 122.67' TO A POINT; THENCE N47°04'04"E, A
DISTANCE OF 172.14' TO A POINT; THENCE N25°42'10"E, A DISTANCE OF 63.96'
TO A POINT; THENCE N09°48'48"W, A DISTANCE OF 64.58' TO A POINT; THENCE
N08°42'32"E, A DISTANCE OF 43.62' TO A POINT; THENCE N03°57'33"W, A
DISTANCE OF 129.19' TO A POINT; THENCE N10°23'07"W, A DISTANCE OF 77.31'
TO A POINT; THENCE N26°46'54"W, A DISTANCE OF 72.69' TO A POINT; THENCE
N22°37'52"W, A DISTANCE OF 55.37' TO A POINT; THENCE N37°29'12"W, A
DISTANCE OF 58.83' TO A POINT; THENCE N10°52'29"W, A DISTANCE OF 67.41'
TO A POINT; THENCE N06°43'58"W, A DISTANCE OF 75.29' TO A POINT; THENCE
N04°28'18"W, A DISTANCE OF 58.73' TO A POINT; THENCE N09°47'41"W, A
DISTANCE OF 66.40' TO A POINT; THENCE N07°46'48"W, A DISTANCE OF 125.00'
TO A POINT; THENCE N07°17'56"W, A DISTANCE OF 73.94' TO A POINT; THENCE
N27°48'16"E, A DISTANCE OF 63.33' TO A POINT; THENCE N09°40'25"W, A
DISTANCE OF 60.00' TO A POINT OF CURVATURE FOR A NON-TANGENT CURVE
IN A COUNTER CLOCKWISE DIRECTION HAVING A CENTRAL ANGLE OF
01°20'32", A RADIUS OF 2,561.35', AN ARC LENGTH OF 60.00', A CHORD LENGTH
OF 60.00', A TANGENT LENGTH OF 30.00', AND A CHORD BEARING OF
N09°40'25"W TO A POINT; THENCE N33°16'38"W, A DISTANCE OF 359.23' TO A
POINT; THENCE N26°02'51"W, A DISTANCE OF 110.11' TO A POINT; THENCE
N17°06'17"W, A DISTANCE OF 126.34' TO A POINT; THENCE N02°10'32"E, A
DISTANCE OF 68.29' TO A POINT; THENCE N78°49'25"E, A DISTANCE OF 43.20'
TO A POINT; THENCE N02°35'47"E, A DISTANCE OF 55.31' TO A POINT; THENCE
N09°32'31"W, A DISTANCE OF 131.09' TO A POINT; THENCE N34°23'41"W, A
DISTANCE OF 95.73' TO A POINT; THENCE N07°40'45"W, A DISTANCE OF 49.28'
TO A POINT; THENCE N28°07'03"E, A DISTANCE OF 129.56' TO A POINT;
THENCE N16°05'47"W, A DISTANCE OF 68.15' TO A POINT; THENCE N03°07'36"E,
A DISTANCE OF 68.13' TO A POINT; THENCE N10°57'17"W, A DISTANCE OF
54.40' TO A POINT; THENCE N25°49'52"W, A DISTANCE OF 34.53' TO A POINT;
THENCE N62°45'10"W, A DISTANCE OF 46.39' TO A POINT; THENCE
N59°47'29"W, A DISTANCE OF 72.37' TO A POINT; THENCE N26°58'04"W, A
DISTANCE OF 85.33' TO A POINT; THENCE N21°19'15"W, A DISTANCE OF 97.42'
TO A POINT; THENCE N30°47'37"E, A DISTANCE OF 57.50' TO A POINT; THENCE
N41°04'02"E, A DISTANCE OF 82.90' TO A POINT; THENCE N06°11'41"W, A
DISTANCE OF 171.08' TO A POINT; THENCE N29°41'32"W, A DISTANCE OF 90.55'
TO A POINT; THENCE N37°16'38"W, A DISTANCE OF 52.42' TO A POINT; THENCE
N21°28'53"W, A DISTANCE OF 83.79' TO A POINT; THENCE N54°42'56"W, A
DISTANCE OF 50.64' TO A POINT; THENCE N65°00'46"W, A DISTANCE OF 43.16'
TO A POINT; THENCE N39°10'44"W, A DISTANCE OF 43.81' TO A POINT; THENCE
N07°14'53"E, A DISTANCE OF 46.03' TO A POINT; THENCE N72°36'50"E, A
DISTANCE OF 84.07' TO A POINT; THENCE N77°02'57"E, A DISTANCE OF 44.45'
TO A POINT; THENCE N46°09'24"E, A DISTANCE OF 185.62' TO A POINT;
THENCE N18°22'33"E, A DISTANCE OF 45.89' TO A POINT; THENCE N23°26'06"W,
A DISTANCE OF 38.97' TO A POINT; THENCE N66°39'20"W, A DISTANCE OF
50.67' TO A POINT; THENCE N61°52'10"W, A DISTANCE OF 99.50' TO A POINT;
THENCE N70°00'40"W, A DISTANCE OF 100.72' TO A POINT; THENCE
N38°16'12"W, A DISTANCE OF 115.79' TO A POINT; THENCE N33°15'34"W, A
DISTANCE OF 70.74' TO A POINT; THENCE N27°44'18"E, A DISTANCE OF 63.59'
TO A POINT; THENCE N66°64'26"E, A DISTANCE OF 134.93' TO A POINT;

120
5

THENCE S88°40'22"E, A DISTANCE OF 81.27' TO A POINT; THENCE S63°01'04"E,
 A DISTANCE OF 107.93' TO A POINT; THENCE N78°46'29"E, A DISTANCE OF
 145.94' TO A POINT; THENCE N60°34'22"E, A DISTANCE OF 108.46' TO A POINT;
 THENCE N49°11'36"E, A DISTANCE OF 75.32' TO A POINT; THENCE N12°30'33"E,
 A DISTANCE OF 48.38' TO A POINT; THENCE N48°55'41"W, A DISTANCE OF
 53.92' TO A POINT; THENCE N18°24'44"W, A DISTANCE OF 76.72' TO A POINT;
 THENCE N04°23'43"W, A DISTANCE OF 57.60' TO A POINT; THENCE N03°59'55"E,
 A DISTANCE OF 21.63' TO A POINT; THENCE N23°05'27"E, A DISTANCE OF 38.03'
 TO A POINT; THENCE N03°44'50"E, A DISTANCE OF 60.33' TO A POINT; THENCE
 N12°58'25"W, A DISTANCE OF 42.68' TO A POINT; THENCE N11°00'12"W, A
 DISTANCE OF 26.97' TO A POINT; THENCE N17°02'34"W, A DISTANCE OF 140.77'
 TO A POINT; THENCE N20°05'52"W, A DISTANCE OF 115.09' TO A POINT;
 THENCE N32°44'26"W, A DISTANCE OF 89.17' TO A POINT; THENCE
 N18°00'55"W, A DISTANCE OF 92.11' TO A POINT; THENCE N04°10'18"W, A
 DISTANCE OF 76.54' TO A POINT; THENCE N01°48'32"E, A DISTANCE OF 42.01'
 TO A POINT; THENCE N33°35'47"W, A DISTANCE OF 16.82' TO A POINT; THENCE
 N07°46'47"E, A DISTANCE OF 29.88' TO A POINT; THENCE N24°28'39"W, A
 DISTANCE OF 69.00' TO A POINT; THENCE N11°30'22"W, A DISTANCE OF 50.93'
 TO A POINT; THENCE N01°54'25"W, A DISTANCE OF 59.78' TO A POINT; THENCE
 N22°58'42"E, A DISTANCE OF 72.04' TO A POINT; THENCE N34°42'36"E, A
 DISTANCE OF 101.34' TO A POINT; THENCE N08°40'54"E, A DISTANCE OF 99.11'
 TO A POINT; THENCE N73°29'17"W, A DISTANCE OF 99.17' TO A POINT; THENCE
 N66°13'58"W, A DISTANCE OF 140.99' TO A POINT; THENCE N82°25'28"W, A
 DISTANCE OF 118.34' TO A POINT; THENCE S16°33'53"W, A DISTANCE OF
 119.50' TO A POINT; THENCE S74°24'40"W, A DISTANCE OF 64.51' TO A POINT;
 THENCE S86°59'30"W, A DISTANCE OF 34.97' TO A POINT; THENCE S30°44'18"W,
 A DISTANCE OF 95.88' TO A POINT; THENCE S14°11'37"E, A DISTANCE OF
 183.91' TO A POINT; THENCE S19°16'04"E, A DISTANCE OF 155.64' TO A POINT;
 THENCE S06°17'31"W, A DISTANCE OF 90.91' TO A POINT; THENCE S10°27'19"E,
 A DISTANCE OF 112.37' TO A POINT; THENCE S25°29'57"E, A DISTANCE OF
 73.01' TO A POINT; THENCE S03°09'08"E, A DISTANCE OF 63.29' TO A POINT;
 THENCE S06°53'10"W, A DISTANCE OF 130.04' TO A POINT; THENCE
 S12°21'14"W, A DISTANCE OF 82.47' TO A POINT; THENCE S33°52'52"W, A
 DISTANCE OF 80.00' TO A POINT; THENCE S60°38'44"W, A DISTANCE OF 132.79'
 TO A POINT; THENCE S82°34'31"W, A DISTANCE OF 132.08' TO A POINT;
 THENCE N80°24'12"W, A DISTANCE OF 44.72' TO A POINT; THENCE
 N48°18'36"W, A DISTANCE OF 45.96' TO A POINT; THENCE N28°32'06"W, A
 DISTANCE OF 66.08' TO A POINT; THENCE N07°23'02"W, A DISTANCE OF 63.55'
 TO A POINT; THENCE N30°41'40"W, A DISTANCE OF 19.70' TO A POINT; THENCE
 N10°38'05"W, A DISTANCE OF 43.75' TO A POINT OF INTERSECTION WITH A
 LINE LOCATED 50.00' EAST OF THE CENTER LINE OF THE LOCATED RAILS OF
 AN EXISTING RAILROAD SPUR; THENCE N02°57'05"W, ON A LINE 50.00' EAST
 OF AND PARALLEL WITH THE CENTER LINE OF THE LOCATED RAILS, A
 DISTANCE OF 912.63' TO A POINT; THENCE N06°25'56"E, A DISTANCE OF 93.09'
 TO A POINT; THENCE N66°53'10"E, A DISTANCE OF 57.91' TO A POINT; THENCE
 N32°20'29"E, A DISTANCE OF 40.44' TO A POINT; THENCE N19°50'23"W, A
 DISTANCE OF 77.03' TO A POINT; THENCE N15°09'51"E, A DISTANCE OF 130.65'
 TO A POINT; THENCE N68°50'37"E, A DISTANCE OF 49.10' TO A POINT; THENCE
 N05°20'06"W, A DISTANCE OF 60.57' TO A POINT; THENCE N32°45'49"E, A
 DISTANCE OF 78.42' TO A POINT; THENCE N21°17'34"W, A DISTANCE OF 93.69'

TO A POINT; THENCE N33°00'02"W, A DISTANCE OF 108.42' TO A POINT; THENCE N07°51'25"E, A DISTANCE OF 54.14' TO A POINT; THENCE N33°45'06"W, A DISTANCE OF 50.43' TO A POINT; THENCE N19°16'01"W, A DISTANCE OF 109.25' TO A POINT; THENCE N10°18'06"E, A DISTANCE OF 23.32' TO A POINT; THENCE N60°59'43"E, A DISTANCE OF 99.36' TO A POINT; THENCE N26°16'52"W, A DISTANCE OF 84.98' TO A POINT; THENCE N04°50'29"E, A DISTANCE OF 25.75' TO A POINT; THENCE N33°42'54"W, A DISTANCE OF 49.10' TO A POINT; THENCE N21°51'54"W, A DISTANCE OF 125.93' TO A POINT; THENCE N13°11'13"W, A DISTANCE OF 54.68' TO A POINT; THENCE N07°39'29"W, A DISTANCE OF 50.53' TO A POINT; THENCE N21°19'55"W, A DISTANCE OF 59.31' TO A POINT; THENCE N07°24'43"W, A DISTANCE OF 67.47' TO A POINT; THENCE N19°50'31"E, A DISTANCE OF 58.29' TO A POINT; THENCE N58°18'18"E, A DISTANCE OF 96.48' TO A POINT; THENCE N63°38'10"E, A DISTANCE OF 170.94' TO A POINT; THENCE N44°47'50"E, A DISTANCE OF 43.35' TO A POINT; THENCE N07°21'24"W, A DISTANCE OF 49.56' TO A POINT; THENCE N13°46'11"E, A DISTANCE OF 67.21' TO A POINT; THENCE N39°26'45"E, A DISTANCE OF 44.85' TO A POINT; THENCE N29°15'12"E, A DISTANCE OF 75.38' TO A POINT; THENCE N10°28'04"E, A DISTANCE OF 73.56' TO A POINT; THENCE N17°12'10"E, A DISTANCE OF 33.77' TO A POINT; THENCE N08°11'44"W, A DISTANCE OF 67.36' TO A POINT; THENCE N24°16'02"W, A DISTANCE OF 82.72' TO A POINT; THENCE N15°47'53"W, A DISTANCE OF 77.35' TO A POINT; THENCE N15°35'21"W, A DISTANCE OF 80.94' TO A POINT; THENCE N25°22'28"E, A DISTANCE OF 91.75' TO A POINT; THENCE N87°14'15"W, A DISTANCE OF 101.90' TO A POINT; THENCE N53°40'39"W, A DISTANCE OF 85.44' TO A POINT; THENCE N28°17'23"W, A DISTANCE OF 140.79' TO A POINT; THENCE N06°14'39"W, A DISTANCE OF 134.20' TO A POINT; THENCE N26°48'33"W, A DISTANCE OF 77.99' TO A POINT; THENCE N28°08'11"E, A DISTANCE OF 67.82' TO A POINT; THENCE N04°09'50"W, A DISTANCE OF 107.64' TO A POINT; THENCE N28°45'03"W, A DISTANCE OF 87.17' TO A POINT; THENCE N27°54'31"E, A DISTANCE OF 60.73' TO A POINT; THENCE N01°34'07"W, A DISTANCE OF 190.85' TO A POINT; THENCE N21°00'46"E, A DISTANCE OF 214.06' TO A POINT; THENCE N70°50'31"E, A DISTANCE OF 195.42' TO A POINT; THENCE N85°48'32"E, A DISTANCE OF 133.71' TO A POINT; THENCE S89°02'37"E, A DISTANCE OF 89.83' TO A POINT; THENCE N83°29'22"E, A DISTANCE OF 84.69' TO A POINT; THENCE S82°51'41"E, A DISTANCE OF 62.25' TO A POINT; THENCE N89°15'52"E, A DISTANCE OF 63.96' TO A POINT; THENCE S84°51'50"E, A DISTANCE OF 118.11' TO A POINT; THENCE N87°17'44"E, A DISTANCE OF 117.75' TO A POINT; THENCE N76°34'38"E, A DISTANCE OF 66.50' TO A POINT; THENCE N87°06'34"E, A DISTANCE OF 55.80' TO A POINT; THENCE N78°43'18"E, A DISTANCE OF 89.72' TO A POINT; THENCE S84°28'34"E, A DISTANCE OF 93.15' TO A POINT; THENCE N81°32'26"E, A DISTANCE OF 30.16' TO A POINT; THENCE S85°20'51"E, A DISTANCE OF 50.84' TO A POINT; THENCE S78°10'19"E, A DISTANCE OF 109.82' TO A POINT; THENCE N74°01'25"E, A DISTANCE OF 46.89' TO A POINT; THENCE S85°43'45"E, A DISTANCE OF 20.69' TO A POINT; THENCE N64°52'15"E, A DISTANCE OF 15.26' TO A POINT; THENCE N83°18'39"E, A DISTANCE OF 69.46' TO THE POINT OF BEGINNING, SAID TRACT CONTAINS A CALCULATED AREA 19,397,772.78 SQUARE FEET OR 445.31 ACRES, MORE OR LESS.

EXCEPT THE FOLLOWING:

120
9

A TRACT OF LAND COMPOSED OF LOTS 30 THROUGH 41, LOTS 44 THROUGH 60, LOTS 145 THROUGH 161, AND LOT 164, ALL IN SANDY POINTE LAKE DEVELOPMENT ADDITION, OUTLOTS "F", "H", "I" AND "U", ALL IN SANDY POINTE LAKE DEVELOPMENT ADDITION, A PORTION OF OUTLOT "S", SANDY POINTE LAKE DEVELOPMENT ADDITION, A PORTION OF THE EAST HALF OF SECTION 13, TOWNSHIP 13 NORTH, RANGE 9 EAST OF THE 6TH P.M., A PORTION OF THE EAST HALF OF SECTION 24, TOWNSHIP 13 NORTH, RANGE 9 EAST OF THE 6TH P.M., A PORTION OF THE NORTHEAST QUARTER OF THE NORTHEAST QUARTER OF SECTION 25, TOWNSHIP 13 NORTH, RANGE 9 EAST OF THE 6TH P.M., A PORTION OF THE WEST HALF OF THE WEST HALF OF SECTION 18, TOWNSHIP 13 NORTH, RANGE 10 EAST OF THE 6TH P.M., A PORTION OF THE WEST HALF OF THE WEST HALF OF SECTION 19, TOWNSHIP 13 NORTH, RANGE 10 EAST OF THE 6TH P.M., AND A PORTION OF THE NORTHWEST QUARTER OF THE NORTHWEST QUARTER OF SECTION 30, TOWNSHIP 13 NORTH, RANGE 10 EAST OF THE 6TH P.M., ALL IN SAUNDERS COUNTY, NEBRASKA, AND MORE PARTICULARLY DESCRIBED AS FOLLOWS:

COMMENCING AT THE NORTHWEST CORNER OF THE SOUTHWEST QUARTER OF THE NORTHEAST QUARTER OF SECTION 13, TOWNSHIP 13 NORTH, RANGE 9 EAST OF THE 6TH P.M.; THENCE EASTERLY ON THE NORTH LINE OF SOUTH HALF OF THE NORTHEAST QUARTER OF SAID SECTION 13 ON AN ASSUMED BEARING OF N87°21'42"E, A DISTANCE OF 2,648.41' THE NORTHEAST CORNER OF THE SOUTHWEST QUARTER OF THE NORTHEAST QUARTER OF SAID SECTION 13; THENCE S02°20'13"E, A DISTANCE OF 404.90' TO THE TRUE POINT OF BEGINNING; THENCE N47°47'57"E, A DISTANCE OF 17.95' TO A POINT; THENCE N13°28'17"E, A DISTANCE OF 95.10' TO A POINT; THENCE N05°37'00"E, A DISTANCE OF 95.00' TO A POINT; THENCE N87°27'28"E, A DISTANCE OF 456.62' TO A POINT; THENCE S45°15'22"E, A DISTANCE OF 141.56' TO A POINT; THENCE S43°40'55"E, A DISTANCE OF 158.55' TO A POINT; THENCE S35°00'54"E, A DISTANCE OF 110.45' TO A POINT; THENCE S27°15'03"E, A DISTANCE OF 183.30' TO A POINT; THENCE S13°11'18"E, A DISTANCE OF 153.88' TO A POINT; THENCE S00°49'26"E, A DISTANCE OF 148.60' TO A POINT; THENCE S06°26'01"W, A DISTANCE OF 149.74' TO A POINT; THENCE S23°30'39"W, A DISTANCE OF 111.02' TO A POINT; THENCE S18°20'54"W, A DISTANCE OF 110.11' TO A POINT; THENCE S13°08'35"W, A DISTANCE OF 110.11' TO A POINT; THENCE S10°19'05"W, A DISTANCE OF 73.19' TO A POINT; THENCE S10°14'54"E, A DISTANCE OF 74.78' TO A POINT; THENCE S14°06'23"E, A DISTANCE OF 110.45' TO A POINT; THENCE S10°58'20"E, A DISTANCE OF 163.82' TO A POINT; THENCE S05°43'12"E, A DISTANCE OF 127.16' TO A POINT; THENCE S04°36'28"W, A DISTANCE OF 68.65' TO A POINT; THENCE S50°13'39"W, A DISTANCE OF 196.77' TO A POINT; THENCE S36°21'05"W, A DISTANCE OF 125.21' TO A POINT; THENCE S21°36'14"W, A DISTANCE OF 87.55' TO A POINT; THENCE S11°58'35"W, A DISTANCE OF 100.83' TO A POINT; THENCE S30°34'16"E, A DISTANCE OF 73.69' TO A POINT; THENCE S07°30'56"W, A DISTANCE OF 29.20' TO A POINT; THENCE S62°36'55"E, A DISTANCE OF 24.55' TO A POINT; THENCE S21°17'25"E, A DISTANCE OF 59.09' TO A POINT; THENCE S28°21'06"E, A DISTANCE OF 56.89' TO A POINT; THENCE S13°12'07"E, A DISTANCE OF 146.26' TO A POINT; THENCE S08°44'22"W, A DISTANCE OF 98.98' TO A POINT; THENCE S35°50'34"W, A DISTANCE OF 85.13' TO A POINT; THENCE

S13°13'47"E, A DISTANCE OF 67.26' TO A POINT; THENCE S32°10'06"E, A DISTANCE OF 146.45' TO A POINT; THENCE S25°47'45"E, A DISTANCE OF 93.00' TO A POINT; THENCE S05°03'25"E, A DISTANCE OF 91.30' TO A POINT; THENCE S24°09'34"E, A DISTANCE OF 39.60' TO A POINT; THENCE S45°27'40"W, A DISTANCE OF 172.32' TO A POINT; THENCE S02°31'38"W, A DISTANCE OF 55.35' TO A POINT; THENCE S20°56'16"E, A DISTANCE OF 63.43' TO A POINT; THENCE S25°52'34"E, A DISTANCE OF 68.99' TO A POINT; THENCE S20°07'11"W, A DISTANCE OF 56.08' TO A POINT; THENCE S30°49'42"W, A DISTANCE OF 109.35' TO A POINT; THENCE S50°18'31"W, A DISTANCE OF 115.15' TO A POINT; THENCE S06°48'48"W, A DISTANCE OF 80.00' TO A POINT; THENCE S58°33'29"E, A DISTANCE OF 146.54' TO A POINT; THENCE S48°49'35"E, A DISTANCE OF 138.26' TO A POINT; THENCE S31°53'12"E, A DISTANCE OF 71.45' TO A POINT; THENCE S33°17'19"W, A DISTANCE OF 245.23' TO A POINT; THENCE S44°45'04"W, A DISTANCE OF 169.40' TO A POINT; THENCE S44°12'35"W, A DISTANCE OF 84.40' TO A POINT; THENCE S66°21'34"W, A DISTANCE OF 47.13' TO A POINT; THENCE S12°16'57"E, A DISTANCE OF 68.79' TO A POINT; THENCE S79°02'17"E, A DISTANCE OF 189.14' TO A POINT; THENCE S61°11'00"E, A DISTANCE OF 119.39' TO A POINT; THENCE S42°36'08"E, A DISTANCE OF 141.28' TO A POINT; THENCE S01°57'02"E, A DISTANCE OF 135.43' TO A POINT; THENCE S20°24'06"W, A DISTANCE OF 122.56' TO A POINT; THENCE S39°50'25"W, A DISTANCE OF 132.82' TO A POINT; THENCE S51°47'54"W, A DISTANCE OF 135.92' TO A POINT; THENCE S39°29'22"W, A DISTANCE OF 110.53' TO A POINT; THENCE S04°27'41"W, A DISTANCE OF 76.83' TO A POINT; THENCE S82°24'12"E, A DISTANCE OF 138.23' TO A POINT; THENCE S60°42'05"E, A DISTANCE OF 23.94' TO A POINT; THENCE S62°02'50"E, A DISTANCE OF 114.57' TO A POINT; THENCE S57°31'41"E, A DISTANCE OF 129.45' TO A POINT; THENCE S35°28'05"E, A DISTANCE OF 71.93' TO A POINT; THENCE S11°49'36"E, A DISTANCE OF 124.97' TO A POINT; THENCE S18°08'13"W, A DISTANCE OF 59.95' TO A POINT; THENCE S27°53'59"W, A DISTANCE OF 145.90' TO A POINT; THENCE S14°08'16"W, A DISTANCE OF 19.46' TO A POINT; THENCE S06°37'09"E, A DISTANCE OF 37.92' TO A POINT; THENCE S32°12'22"E, A DISTANCE OF 46.37' TO A POINT; THENCE S33°55'40"E, A DISTANCE OF 158.36' TO A POINT; THENCE S06°35'28"E, A DISTANCE OF 153.42' TO A POINT; THENCE S07°03'50"E, A DISTANCE OF 110.28' TO A POINT; THENCE S12°37'25"E, A DISTANCE OF 58.67' TO A POINT; THENCE S02°07'26"E, A DISTANCE OF 73.25' TO A POINT; THENCE S10°24'10"W, A DISTANCE OF 114.69' TO A POINT; THENCE S25°59'10"W, A DISTANCE OF 62.66' TO A POINT; THENCE S04°44'06"W, A DISTANCE OF 197.29' TO A POINT; THENCE S02°30'30"W, A DISTANCE OF 145.15' TO A POINT; THENCE S06°03'34"W, A DISTANCE OF 164.99' TO A POINT; THENCE S25°04'21"W, A DISTANCE OF 57.86' TO A POINT; THENCE S38°41'02"W, A DISTANCE OF 86.03' TO A POINT; THENCE S48°15'01"W, A DISTANCE OF 69.82' TO A POINT; THENCE S69°54'54"W, A DISTANCE OF 85.45' TO A POINT; THENCE S74°23'12"W, A DISTANCE OF 44.49' TO A POINT; THENCE S32°16'21"W, A DISTANCE OF 54.46' TO A POINT; THENCE S09°47'06"E, A DISTANCE OF 29.83' TO A POINT; THENCE S44°28'17"E, A DISTANCE OF 50.85' TO A POINT; THENCE S76°16'01"E, A DISTANCE OF 22.20' TO A POINT; THENCE N43°24'25"E, A DISTANCE OF 35.47' TO A POINT; THENCE S71°12'52"E, A DISTANCE OF 23.15' TO A POINT; THENCE S08°34'40"E, A DISTANCE OF 36.52' TO A POINT; THENCE S42°03'45"W, A DISTANCE OF 55.89' TO A POINT; THENCE S53°17'23"W, A DISTANCE OF 156.44' TO A POINT; THENCE S62°15'35"W, A DISTANCE OF 82.22'

120
9

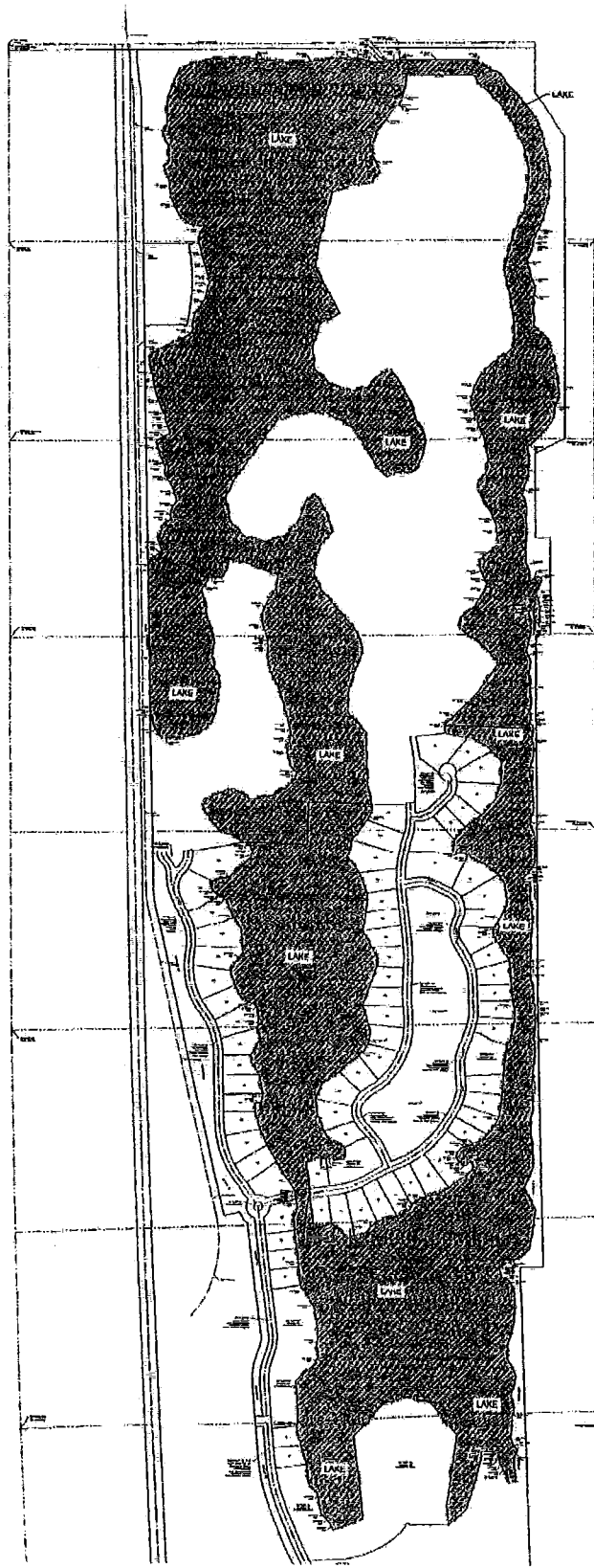
TO A POINT; THENCE S76°55'45"W, A DISTANCE OF 83.80' TO A POINT; THENCE
 S66°47'29"W, A DISTANCE OF 79.28' TO A POINT; THENCE S33°42'07"W, A
 DISTANCE OF 40.41' TO A POINT; THENCE S28°00'22"W, A DISTANCE OF 22.11'
 TO A POINT; THENCE S61°28'10"W, A DISTANCE OF 106.25' TO A POINT;
 THENCE S75°36'19"W, A DISTANCE OF 138.86' TO A POINT; THENCE
 S60°02'48"W, A DISTANCE OF 108.82' TO A POINT; THENCE S73°23'29"W, A
 DISTANCE OF 72.47' TO A POINT; THENCE N82°30'12"W, A DISTANCE OF 57.84'
 TO A POINT; THENCE N58°33'00"W, A DISTANCE OF 117.47' TO A POINT;
 THENCE S78°36'30"W, A DISTANCE OF 125.49' TO A POINT; THENCE
 N08°19'53"W, A DISTANCE OF 197.73' TO A POINT; THENCE N03°34'04"W, A
 DISTANCE OF 60.21' TO A POINT; THENCE N08°19'53"W, A DISTANCE OF 180.77'
 TO A POINT; THENCE N67°38'11"E, A DISTANCE OF 71.89' TO A POINT; THENCE
 S87°14'07"E, A DISTANCE OF 71.59' TO A POINT; THENCE N85°33'21"E, A
 DISTANCE OF 35.94' TO A POINT; THENCE S87°05'11"E, A DISTANCE OF 85.26'
 TO A POINT; THENCE N02°09'31"E, A DISTANCE OF 80.00' TO A POINT; THENCE
 N68°08'29"W, A DISTANCE OF 107.06' TO A POINT; THENCE N36°27'28"W, A
 DISTANCE OF 74.49' TO A POINT; THENCE N22°23'05"W, A DISTANCE OF 125.53'
 TO A POINT; THENCE N06°36'41"W, A DISTANCE OF 118.64' TO A POINT;
 THENCE N23°29'33"E, A DISTANCE OF 116.17' TO A POINT; THENCE
 N56°11'12"E, A DISTANCE OF 135.14' TO A POINT; THENCE N40°58'02"E, A
 DISTANCE OF 74.86' TO A POINT; THENCE N56°09'28"E, A DISTANCE OF 98.31'
 TO A POINT; THENCE N37°19'48"E, A DISTANCE OF 54.54' TO A POINT; THENCE
 N31°02'04"E, A DISTANCE OF 47.70' TO A POINT; THENCE N16°14'30"E, A
 DISTANCE OF 67.17' TO A POINT; THENCE N16°59'12"W, A DISTANCE OF 63.81'
 TO A POINT; THENCE N19°17'04"W, A DISTANCE OF 132.97' TO A POINT;
 THENCE N19°52'54"E, A DISTANCE OF 137.94' TO A POINT; THENCE
 N19°10'30"E, A DISTANCE OF 137.35' TO A POINT; THENCE N00°47'36"E, A
 DISTANCE OF 63.36' TO A POINT; THENCE N30°01'26"W, A DISTANCE OF 71.46'
 TO A POINT; THENCE N31°54'33"W, A DISTANCE OF 134.45' TO A POINT;
 THENCE N08°48'15"E, A DISTANCE OF 136.26' TO A POINT; THENCE
 N03°46'56"E, A DISTANCE OF 134.22' TO A POINT; THENCE N24°37'21"W, A
 DISTANCE OF 146.51' TO A POINT; THENCE N38°22'06"W, A DISTANCE OF
 135.83' TO A POINT; THENCE N13°25'46"E, A DISTANCE OF 108.82' TO A POINT;
 THENCE N36°24'28"E, A DISTANCE OF 171.64' TO A POINT; THENCE
 N26°57'38"E, A DISTANCE OF 60.02' TO A POINT; THENCE N01°15'43"W, A
 DISTANCE OF 52.84' TO A POINT; THENCE N13°23'22"W, A DISTANCE OF 131.27'
 TO A POINT; THENCE N04°31'34"W, A DISTANCE OF 126.96' TO A POINT;
 THENCE N03°58'40"W, A DISTANCE OF 130.03' TO A POINT; THENCE
 N03°41'08"W, A DISTANCE OF 107.19' TO A POINT; THENCE N42°10'01"W, A
 DISTANCE OF 190.47' TO A POINT; THENCE N00°31'33"E, A DISTANCE OF
 130.81' TO A POINT; THENCE N14°34'33"E, A DISTANCE OF 135.68' TO A POINT;
 THENCE N19°21'33"E, A DISTANCE OF 132.31' TO A POINT; THENCE
 N02°13'07"W, A DISTANCE OF 72.46' TO A POINT; THENCE N27°08'34"W, A
 DISTANCE OF 110.68' TO A POINT; THENCE N43°27'11"W, A DISTANCE OF
 130.00' TO A POINT; THENCE N44°21'45"W, A DISTANCE OF 207.01' TO A POINT;
 THENCE N27°16'04"W, A DISTANCE OF 122.81' TO A POINT; THENCE
 N05°41'40"E, A DISTANCE OF 122.45' TO A POINT; THENCE N17°21'41"E, A
 DISTANCE OF 96.85' TO A POINT; THENCE N41°14'00"E, A DISTANCE OF 108.44'
 TO A POINT; THENCE N10°11'31"W, A DISTANCE OF 80.55' TO A POINT; THENCE
 N27°06'07"W, A DISTANCE OF 131.38' TO A POINT; THENCE N38°34'29"W, A

DISTANCE OF 69.57' TO A POINT; THENCE S81°39'48"W, A DISTANCE OF 74.49' TO A POINT; THENCE S18°08'53"W, A DISTANCE OF 129.37' TO A POINT; THENCE S37°31'13"W, A DISTANCE OF 147.79' TO A POINT; THENCE S70°32'39"W, A DISTANCE OF 147.79' TO A POINT; THENCE N76°25'55"W, A DISTANCE OF 147.79' TO A POINT; THENCE N43°24'29"W, A DISTANCE OF 147.79' TO A POINT; THENCE N14°43'16"W, A DISTANCE OF 151.63' TO A POINT; THENCE N26°58'36"E, A DISTANCE OF 151.63' TO A POINT; THENCE N32°43'27"E, A DISTANCE OF 126.55' TO A POINT; THENCE N37°34'49"E, A DISTANCE OF 131.12' TO A POINT; THENCE N30°25'45"E, A DISTANCE OF 104.62' TO A POINT; THENCE N38°53'48"E, A DISTANCE OF 111.25' TO A POINT; THENCE N70°02'04"E, A DISTANCE OF 117.82' TO A POINT; THENCE N79°28'07"E, A DISTANCE OF 117.87' TO A POINT; THENCE S85°57'31"E, A DISTANCE OF 108.45' TO A POINT; THENCE S66°21'05"E, A DISTANCE OF 107.11' TO A POINT; THENCE S62°46'15"E, A DISTANCE OF 66.64' TO A POINT; THENCE S41°37'23"E, A DISTANCE OF 89.59' TO A POINT; THENCE S32°25'04"E, A DISTANCE OF 170.66' TO A POINT; THENCE S39°25'20"E, A DISTANCE OF 135.54' TO A POINT; THENCE N68°10'14"E, A DISTANCE OF 80.84' TO A POINT; THENCE N87°13'32"E, A DISTANCE OF 113.22' TO A POINT; THENCE N31°14'35"E, A DISTANCE OF 91.61' TO A POINT; THENCE N18°16'38"E, A DISTANCE OF 81.75' TO A POINT; THENCE N01°34'29"E, A DISTANCE OF 89.21' TO A POINT; THENCE N33°04'10"W, A DISTANCE OF 124.05' TO A POINT; THENCE N21°14'07"W, A DISTANCE OF 131.89' TO A POINT; THENCE N32°51'05"W, A DISTANCE OF 247.97' TO A POINT; THENCE S60°56'40"W, A DISTANCE OF 80.00' TO A POINT; THENCE S39°38'45"W, A DISTANCE OF 126.08' TO A POINT; THENCE S74°56'17"W, A DISTANCE OF 121.96' TO A POINT; THENCE N79°53'25"W, A DISTANCE OF 68.43' TO A POINT; THENCE N65°55'39"W, A DISTANCE OF 81.36' TO A POINT; THENCE N47°32'06"W, A DISTANCE OF 154.67' TO A POINT; THENCE N06°30'54"W, A DISTANCE OF 158.46' TO A POINT; THENCE N16°24'45"E, A DISTANCE OF 167.87' TO A POINT; THENCE N61°46'22"E, A DISTANCE OF 145.13' TO A POINT; THENCE N29°00'17"W, A DISTANCE OF 257.64' TO A POINT; THENCE N29°35'33"W, A DISTANCE OF 103.31' TO A POINT; THENCE N07°35'01"E, A DISTANCE OF 135.67' TO A POINT; THENCE N12°00'35"E, A DISTANCE OF 237.26' TO A POINT; THENCE N13°57'40"E, A DISTANCE OF 127.27' TO A POINT; THENCE N68°18'39"E, A DISTANCE OF 151.66' TO A POINT; THENCE N81°08'49"E, A DISTANCE OF 117.45' TO A POINT; THENCE N39°44'22"E, A DISTANCE OF 85.08' TO A POINT; THENCE N03°45'17"W, A DISTANCE OF 65.35' TO A POINT; THENCE N29°31'40"W, A DISTANCE OF 76.39' TO A POINT; THENCE N03°54'04"W, A DISTANCE OF 80.23' TO A POINT; THENCE N16°43'58"E, A DISTANCE OF 82.44' TO A POINT; THENCE N34°01'53"E, A DISTANCE OF 208.19' TO A POINT; THENCE N47°47'57"E, A DISTANCE OF 34.10' TO THE POINT OF BEGINNING, SAID TRACT CONTAINS A CALCULATED AREA 7,917,969.43 SQUARE FEET OR 181.77 ACRES, MORE OR LESS.

120
11

THE TOTAL AREA OF SANDY POINT LAKE CONTAINS A CALCULATED AREA OF 11,479,803.35 SQUARE FEET OR 263.54 ACRES, MORE OR LESS.

4650107J



220
12