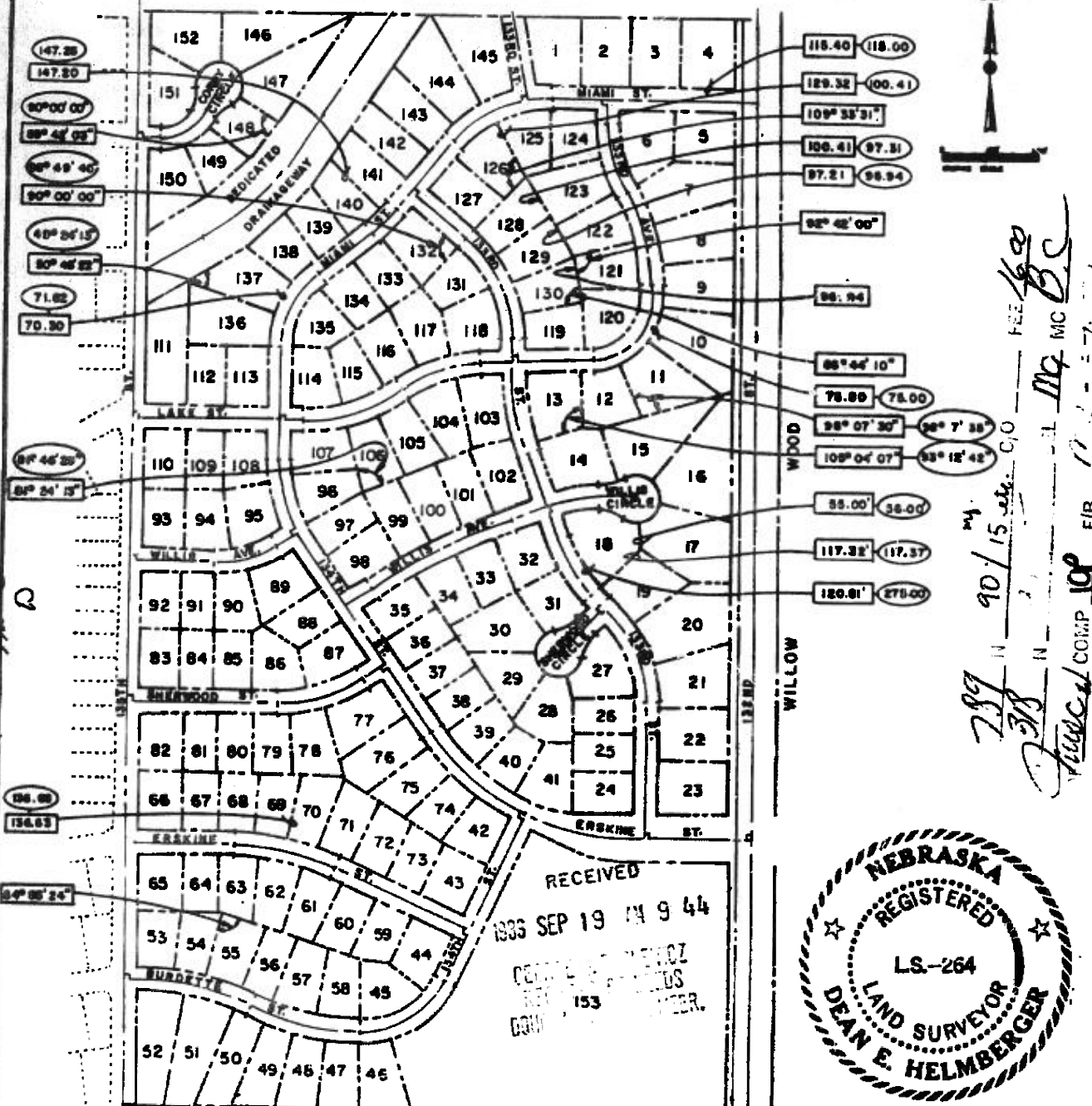


AFFIDAVIT

SUNRIDGE

This is a correction to Lots 4, 10, 11, 13, 17, 18, 19, 55, 69, 70, 106, 121, 125, 126, 128, 129, 130, 132, 137, 140, 141 and 148 of Sunridge, a subdivision located in part of the East Half (E 1/2) of the Southeast Quarter (SE 1/4) of Section 12, Township 15 North, Range 11 East of the 6th P.M., Douglas County, Nebraska, as platted and recorded.



This is to certify that the lot dimensions and angles encircled on this plat were shown in error on the original platting of Sunridge and I further certify that the lot dimensions and angles enclosed within a rectangle as shown on this affidavit are the true, correct and originally intended lot dimensions and angles.

July 17, 1986
Date

Dean E. Helmsberger
Dean E. Helmsberger, LS-264

LEGEND

- 147.25 INFORMATION TO BE CORRECTED
- 146.50 CORRECTED INFORMATION



289 N 90/15
338 N 27
FEE \$60
M.C. BC
FIB 108-574-10

SHEET 1/1
DATE 7-17-86
K.M.A. NO. 8840339

AFFIDAVIT
CORRECTION PLAT

KIRKHAM, MICHAEL AND ASSOCIATES
ARCHITECTS ENGINEERS PLANNERS

18062 June 6
148.07
148.01
SHEET 1/1