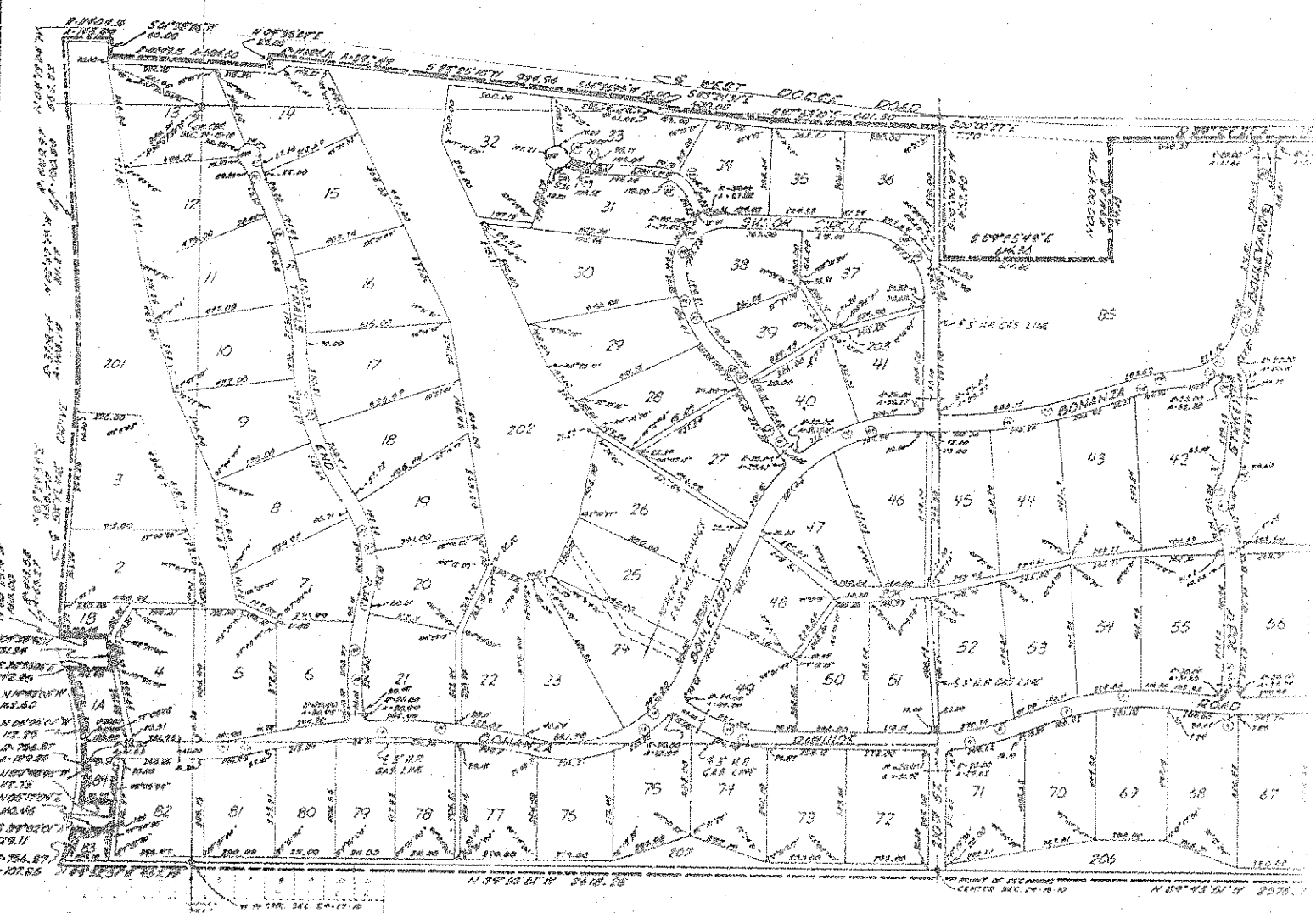


SKYLINE RANCHES

A SUBDIVISION LOCATED IN THE NORTHWEST QUARTER OF SECTION 24, THE NORTHWEST QUARTER OF SECTION 24, A PART OF THE NORTHEAST QUARTER OF SECTION 23, A PART OF THE SOUTHWEST QUARTER OF SECTION 24, A PART OF THE SOUTHWEST QUARTER OF SECTION 23, LYING SOUTH OF WEST COUSE ROAD, ALL IN TOWNSHIP 13 NORTH, RANGE 10 EAST OF THE 6TH P.M., DOUGLAS COUNTY, NEBRASKA



WARRANTY OF MERCHANTABILITY

THIS IS TO CERTIFY THAT I FIND NO RECORD OR SPECIAL NOTES OR DEEDS AGAINST THE PROPERTY DESCRIBED IN THE SUBDIVISION'S CERTIFICATE AND EMBODIED WITHIN THIS PLAT AS SHOWN BY THE RECORDS OF THIS OFFICE.

DATE June 9, 1971

[Signature]
 COUNTY CLERK

WARRANTY OF TITLE

THIS PLAT OF SKYLINE RANCHES WAS APPROVED BY THE DOUGLAS COUNTY PLANNING COMMISSION THIS 11th DAY OF July, 1971.

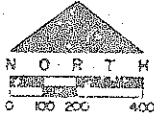
[Signature]
 COUNTY CLERK

WARRANTY OF RECORDS

THE LOCATION OF THIS PLAT OF LOTS 1, 2, 4, 5, AND 6 EAST WADSWORTH ADDITION, ALSO KNOWN AS ALL EXCEPT LOT 3 OF THE EAST WADSWORTH ADDITION, AND LOTS 7 THROUGH 13, 14, 15, 16, 17, 18, 19, 20, 21, 22, 23, 24, 25, 26, 27, 28, 29, 30, 31, 32, 33, 34, 35, 36, 37, 38, 39, 40, 41, 42, 43, 44, 45, 46, 47, 48, 49, 50, 51, 52, 53, 54, 55, 56, 57, 58, 59, 60, 61, 62, 63, 64, 65, 66, 67, 68, 69, 70, 71, 72, 73, 74, 75, 76, 77, 78, 79, 80, 81, 82, AND THIS PLAT OF SKYLINE RANCHES WAS APPROVED BY THE DOUGLAS COUNTY BOARD OF COMMISSIONERS ON THIS 11th DAY OF July, A.D., 1971.

[Signature]
 COUNTY CLERK

CURVE DATA											
NO.	DELTA	T	R	D	L	NO.	DELTA	T	R	D	L
1	0-30-11	101.72	2222.22	3.13374	101.72	70	101-11-46	231.33	186.00	101.72	101.72
2	0-30-11	89.35	1737.05	3.13370	126.16	11	101-11-36	270.00	140.00	101.72	101.72
3	0-30-11	12.82	1272.57	4.14464	97.17	16	11-51-54	166.75	114.00	101.72	101.72
4	0-30-11	31.33	1373.34	4.14701	102.33	17	11-51-54	180.50	108.00	101.72	101.72
5	0-30-11	28.25	134.04	14.01147	87.23	18	11-51-54	180.50	108.00	101.72	101.72
6	0-30-11	241.02	2526.83	4.13723	423.02	20	11-51-54	110.85	600.00	101.72	101.72
7	0-30-11	217.03	165.00	11.01051	141.00	40	11-51-54	170.00	111.00	101.72	101.72
8	11-31-51	155.29	321.30	7.02232	305.38	41	11-51-54	116.72	661.00	101.72	101.72
9	11-31-51	168.23	421.30	6.23253	321.30	42	11-51-54	432.44	647.00	101.72	101.72
10	11-31-51	161.41	521.30	10.12310	351.30	43	11-51-54	312.33	1142.00	101.72	101.72
11	11-31-51	223.25	181.30	8.76805	301.20	44	11-51-54	315.33	725.00	101.72	101.72
12	11-31-51	321.54	451.00	11.72140	431.70	45	11-51-54	112.75	521.00	101.72	101.72
13	11-31-51	421.50	311.00	11.22847	701.20	46	11-51-54	201.44	1071.00	101.72	101.72
14	11-31-51	305.00	205.00	2.10131	101.41	47	11-51-54	101.72	101.72	101.72	101.72
15	11-31-51	451.00	301.00	2.10340	101.72	48	11-51-54	101.72	101.72	101.72	101.72
16	11-31-51	71.88	810.00	0.10331	201.30	49	11-51-54	201.44	1071.00	101.72	101.72
17	11-31-51	104.00	820.00	0.10331	211.00	50	11-51-54	101.72	101.72	101.72	101.72
18	11-31-51	107.00	734.00	0.10343	201.00	51	11-51-54	101.72	101.72	101.72	101.72
19	11-31-51	153.43	1223.00	0.10346	320.00	52	11-51-54	101.72	101.72	101.72	101.72
20	11-31-51	101.00	401.00	10.10341	101.00	53	11-51-54	101.72	101.72	101.72	101.72
21	11-31-51	355.72	411.00	12.10240	701.00	54	11-51-54	101.72	101.72	101.72	101.72
22	11-31-51	211.72	011.00	0.10344	101.55	55	11-51-54	101.72	101.72	101.72	101.72
23	11-31-51	270.00	871.00	0.10340	101.17	56	11-51-54	101.72	101.72	101.72	101.72
24	11-31-51	268.00	1150.00	0.10343	101.00	57	11-51-54	101.72	101.72	101.72	101.72
25	11-31-51	270.00	1400.00	0.10250	101.72	58	11-51-54	101.72	101.72	101.72	101.72
26	11-31-51	451.00	201.00	10.10340	101.72	59	11-51-54	101.72	101.72	101.72	101.72
27	11-31-51	451.00	201.00	10.10340	101.72	60	11-51-54	101.72	101.72	101.72	101.72
28	11-31-51	20.30	80.00	10.10340	101.72	61	11-51-54	101.72	101.72	101.72	101.72
29	11-31-51	31.00	80.00	10.10340	101.72	62	11-51-54	101.72	101.72	101.72	101.72
30	11-31-51	31.00	80.00	10.10340	101.72	63	11-51-54	101.72	101.72	101.72	101.72
31	11-31-51	31.00	80.00	10.10340	101.72	64	11-51-54	101.72	101.72	101.72	101.72
32	11-31-51	31.00	80.00	10.10340	101.72	65	11-51-54	101.72	101.72	101.72	101.72
33	11-31-51	80.00	101.00	10.10340	101.72						



DWG. NO. 376-71A
DATE: 4 JUNE, 1971

SECTION'S CERTIFICATE:

I HEREBY CERTIFY THAT WE HAVE MADE A RECORDED SURVEY OF THE ADDITION DESCRIBED HEREIN AND THAT TEMPORARY MONUMENTS HAVE BEEN PLACED AS SHOWN ON THE WITHIN PLAT AND THAT A BOUND HAS BEEN FURNISHED TO DAKOTA COUNTY IN ORDER TO INSURE THE PLACING OF PERMANENT MONUMENTS AND CORNERS. SAID ADDITION IS KNOWN AS THE RANGES AND IS LOCATED IN THE NORTHWEST QUARTER OF SECTION 24, THE NORTHWEST QUARTER OF SECTION 24, A PART OF THE NORTHEAST QUARTER OF SECTION 23, A PART OF THE SOUTHWEST QUARTER OF SECTION 14, A PART OF THE SOUTHWEST QUARTER OF SECTION 13, LINDSEY SOUTH OF WEST BROAD ROAD, ALL IN TOWNSHIP 15 NORTH, RANGE 4 EAST OF THE 6TH P.M., PONDOLA COUNTY, NEBRASKA MORE PARTICULARLY DESCRIBED AS FOLLOWS:

BEGINNING AT THE CENTER OF SAID SECTION 24, THENCE NORTH 02°52'13" WEST (ASSUMED BEARING) A DISTANCE OF 2518.29 FEET TO THE MOST CURVED CORNER OF SAID SECTION 24; THENCE CONTINUING NORTH 02°52'13" WEST A DISTANCE OF 452.14 FEET TO A POINT ON THE EAST RIGHT OF WAY LINE OF SUTCLIFF DRIVE; THENCE NORTHEASTERLY ON A 256.87 FOOT RADIUS CURVE TO THE LEFT A DISTANCE OF 202.05 FEET; THENCE SOUTH 02°52'13" EAST A DISTANCE OF 128.11 FEET; THENCE NORTH 02°52'13" EAST A DISTANCE OF 110.00 FEET; THENCE NORTH 02°52'13" WEST A DISTANCE OF 112.72 FEET; THENCE NORTHERLY ON A 756.87 FOOT RADIUS CURVE TO THE LEFT A DISTANCE OF 189.88 FEET; THENCE NORTH 02°52'13" WEST A DISTANCE OF 112.29 FEET; THENCE NORTH 14°42'02" WEST A DISTANCE OF 162.60 FEET; THENCE SOUTH 02°52'13" EAST A DISTANCE OF 142.55 FEET; THENCE NORTH 02°52'13" WEST A DISTANCE OF 121.34 FEET; THENCE NORTH 02°52'13" WEST A DISTANCE OF 160.00 FEET; THENCE NORTHERLY ON A 413.58 FOOT RADIUS CURVE TO THE RIGHT A DISTANCE OF 64.17 FEET; THENCE NORTH 02°52'13" EAST A DISTANCE OF 656.70 FEET; THENCE NORTHERLY ON A 2018.44 FOOT RADIUS TO THE LEFT A DISTANCE OF 469.15 FEET; THENCE NORTH 02°52'13" WEST A DISTANCE OF 311.33 FEET; TO A POINT OF CONJUNCTION; THENCE NORTHERLY ON A 413.58 FOOT RADIUS CURVE TO THE LEFT A DISTANCE OF 100.80 FEET; THENCE NORTH 02°52'13" WEST A DISTANCE OF 553.32 FEET; THENCE EASTERLY ON A 11,409.16 FOOT RADIUS CURVE TO THE LEFT A DISTANCE OF 146.52 FEET; THENCE SOUTH 01°50'00" WEST A DISTANCE OF 60 FEET; THENCE EASTERLY ON A 11,409.16 FOOT RADIUS CURVE TO THE RIGHT A DISTANCE OF 184.80 FEET; THENCE NORTH 02°52'13" EAST A DISTANCE OF 25.00 FEET; THENCE EASTERLY ON A 11,409.16 FOOT RADIUS CURVE TO THE RIGHT A DISTANCE OF 188.49 FEET; THENCE SOUTH 02°52'13" EAST A DISTANCE OF 202.05 FEET; THENCE SOUTH 02°52'13" WEST A DISTANCE OF 12.00 FEET; THENCE SOUTH 02°52'13" EAST A DISTANCE OF 461.30 FEET; THENCE SOUTH 02°52'13" EAST A DISTANCE OF 7.70 FEET; THENCE SOUTH 02°52'13" EAST A DISTANCE OF 642.00 FEET; THENCE SOUTH 02°52'13" EAST A DISTANCE OF 614.362 FEET; THENCE NORTH 02°52'13" WEST A DISTANCE OF 428.03 FEET; THENCE NORTH 02°52'13" EAST A DISTANCE OF 1300.14 FEET; THENCE NORTH 02°52'13" EAST A DISTANCE OF 150.00 FEET; THENCE NORTH 02°52'13" EAST A DISTANCE OF 300.00 FEET; THENCE SOUTH 02°52'13" WEST A DISTANCE OF 300.00 FEET; THENCE SOUTH 02°52'13" EAST A DISTANCE OF 166.49 FEET; THENCE SOUTH 02°52'13" WEST A DISTANCE OF 2240.00 FEET; THENCE NORTH 02°52'13" WEST A DISTANCE OF 2576.79 FEET TO THE POINT OF BEGINNING.

DATE: 16 June, 1971

William B. Quinn
LAND SURVEYOR 25-286



SATISFACTION OF REPLAT AND PETITION FOR VACATION

KNOW ALL MEN BY THESE PRESENTS: THAT WESTBANK DEVELOPMENT CO., A NEBRASKA CORPORATION (EMER 1), AND THE UNITED STATES NATIONAL BANK OF OMAHA (EMER 2) BEING THE SOLE OWNERS AND PROPRIETORS OF THE LAND DESCRIBED IN THE SURVEYERS CERTIFICATE AND PROBONOED WITHIN THIS PLAT WAS CAUSED BY THE SAME TO BE SUBDIVIDED IN 10 LOTS SAID LOTS BEING AS SHOWN ON THIS REPLAT AND BY FURTHER PETITION THE NEBRASKA LEGISLATIVE BODY OF LAW BEING PASSED TO VACATE THE PRIOR PLATTING OF SAID LAND AND VACATE TO THE SUTCLIFF CORNERS TO THE CENTER OF THE VACATED STREET. THE UNDERSIGNED FURTHER DECLARE SAID PRIOR PLATTING AND SAID STREETS TO BE VACATED.

IN WITNESS WHEREOF I DO HEREBY SET OUR HAND THIS 5 DAY OF June, A.D., 1971.

UNITED STATES NATIONAL BANK OF OMAHA
WESTBANK DEVELOPMENT CO.
R. P. Miller vs. L. A. Thornton, President
L. A. Thornton, President
L. A. Thornton, President
ATTEST: P. P. Wilson, P.C. ATTEST: Paul Decker

ACKNOWLEDGMENT OF NOTARY
STATE OF NEBRASKA
COUNTY OF PONDOLA
ON THIS 7 DAY OF June, A.D., 1971, BEFORE ME A NOTARY PUBLIC DUTY COMMISSIONED AND QUALIFIED IN AND FOR SAID COUNTY AND STATE, PERSONALLY MET R. P. Miller, PRESIDENT OF WESTBANK DEVELOPMENT CO., A NEBRASKA CORPORATION, WHO IS PERSONALLY KNOWN TO ME TO BE THE IDENTICAL PERSON AND CALCULATED THE FIDUCIARY OBLIGATION AND HE ACKNOWLEDGED THAT HE EXECUTED SAID INDICATION AS AN VOLUNTARY ACT AND TRUED AS SUCH OFFICER, AND THE SEAL OF SAID COMMISSIONER WAS THEREBY AFFIXED BY HIS AUTHORITY.

WITNESSE ME HARRY ANN NOTARIAL SEAL AT Omaha, NEBRASKA IN SAID COUNTY THE DATE LAST AFORESAID.
Harvey E. Dorman, Notary Public

MY COMMISSION EXPIRES ON THE 5 DAY OF June, 1971.

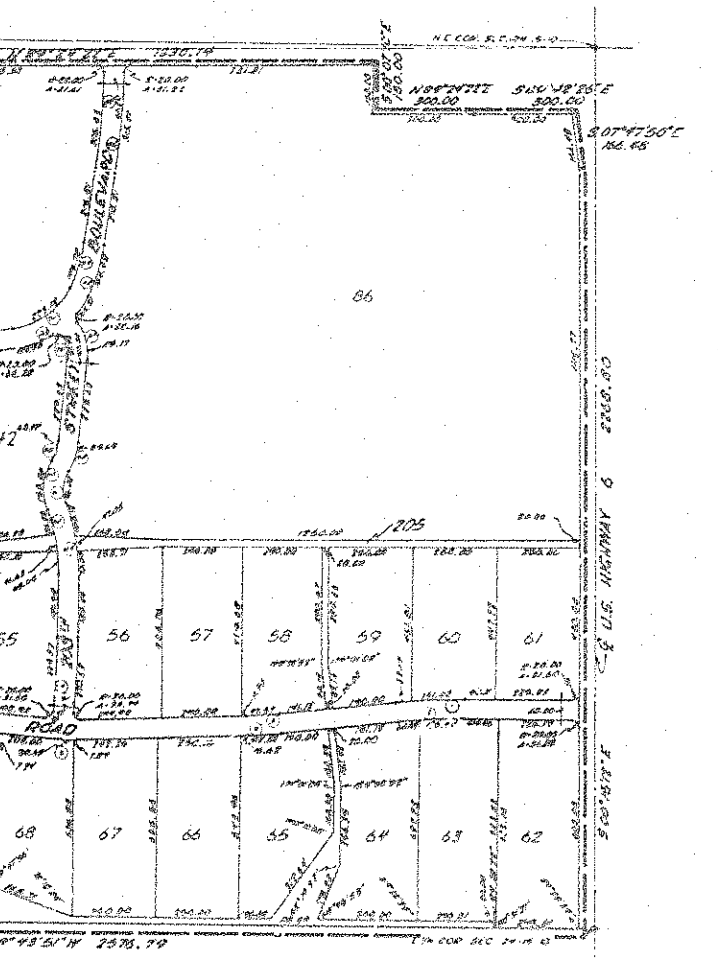
ACKNOWLEDGMENT OF NOTARY
STATE OF NEBRASKA
COUNTY OF PONDOLA
ON THIS 10 DAY OF June, A.D., 1971, BEFORE ME A NOTARY PUBLIC DUTY COMMISSIONED AND QUALIFIED IN AND FOR SAID COUNTY AND STATE, PERSONALLY MET R. P. Miller, PRESIDENT OF THE UNITED STATES NATIONAL BANK OF OMAHA, WHO IS PERSONALLY KNOWN TO ME TO BE THE IDENTICAL PERSON AND CALCULATED THE FIDUCIARY OBLIGATION AND HE ACKNOWLEDGED THAT HE EXECUTED SAID INDICATION AS AN VOLUNTARY ACT AND TRUED AS SUCH OFFICER AND THE SEAL OF SAID COMMISSIONER WAS THEREBY AFFIXED BY HIS AUTHORITY.

WITNESSE ME HARRY ANN NOTARIAL SEAL AT Omaha, NEBRASKA IN SAID COUNTY THE DATE LAST AFORESAID.
Joseph H. Hester, Notary Public

MY COMMISSION EXPIRES ON THE 24 DAY OF March, 1972.

APPROVAL OF COUNTY SUPERVISOR
I HEREBY APPROVE OF THIS PLAT OF SUTCLIFF AVENUE ON THIS 22 DAY OF June, A.D., 1971.
Raymond C. Hillard, County Supervisor

GOLLETON, SCHIMMER & ASSOCIATES, INC.
ARCHITECTS - ENGINEERS - PLANNERS
OMAHA, NEBRASKA DAVENPORT, IOWA



T	R	D	L
51.31	198.00	34,113.14	335.59
70.88	140.00	67,026.28	247.22
48.75	315.00	15,125.33	331.52
39.36	455.00	22,327.57	291.11
19.20	310.00	4,060.23	216.79
23.15	640.00	8,120.46	219.73
73.46	211.70	6,201.73	213.44
16.77	865.00	8,125.72	232.41
72.44	640.00	8,120.46	248.73
33.33	363.77	9,736.12	670.90
39.31	223.70	29,366.79	347.57
12.05	375.00	24,330.03	429.07
56.84	171.23	3,326.83	462.20
18.78	1637.87	3,525.04	623.37
15.40	1170.54	4,197.02	289.76
42.04	1210.00	4,516.12	253.63
15.45	280.00	20,423.78	381.83
12.22	216.00	18,045.53	223.11
12.00	587.44	10,274.60	264.12
73.78	647.34	13,511.03	246.72
63.78	2107.47	2,880.27	124.76
38.18	2247.37	3,567.52	375.78
14.72	39.37	52,120.77	84.04
72.78	359.32	35,962.20	174.40
52.24	144.00	39,336.52	67.44
48.52	205.00	27,943.16	83.69
81.24	103.00	21,721.71	159.68
31.15	192.00	59,067.63	94.82
16.83	517.88	12,010.91	124.76
18.09	365.68	8,274.35	117.21
14.24	2005.09	1,484.50	240.46
17.26	812.00	1,230.42	218.34

40. ENTERED IN NEBRASKA INDEX AND RECORDS IN THE REGISTER OF DEEDS OFFICE OF PONDOLA COUNTY, NEBRASKA.
27 DAY OF June 1971 No. 144 M. S. PONDOLA DISTLER, REGISTER OF DEEDS 58-75