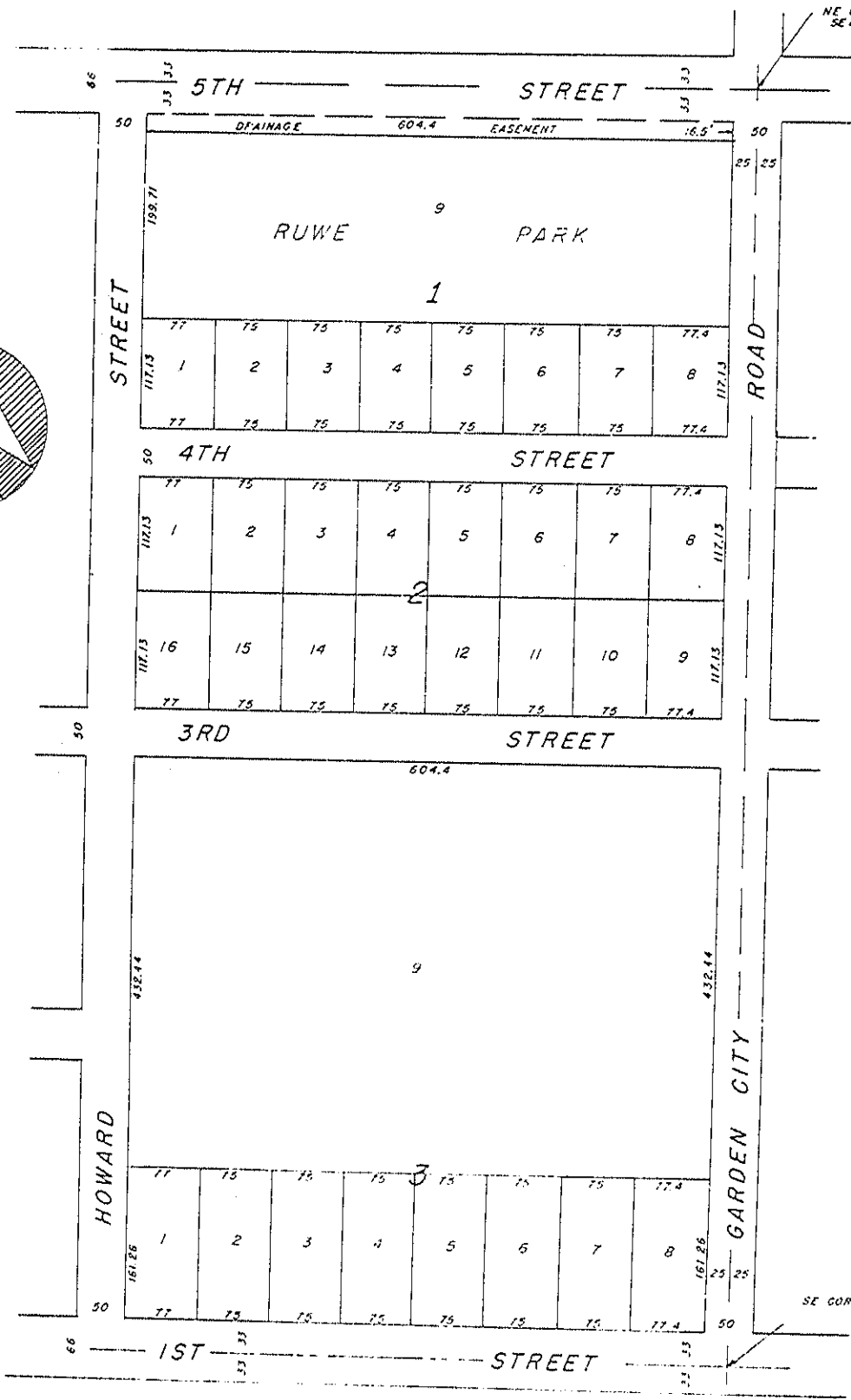
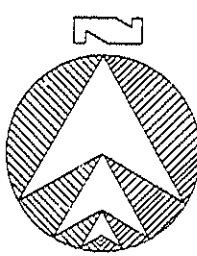


RUWE'S ADDITION

TO
FREMONT, NEBRASKA

SCALE 1" = 100'

NE CORNER OF WEST 1/2 OF SE 1/4 - NE 1/4 SECTION 24-17-8



KNOW ALL MEN BY THESE PRESENTS, That I, Albert J. Ruwe, of the County of Dodge, State of Nebraska, do hereby certify that the West 1/2 of the SE 1/4 of the NE 1/4 of Section 24-17-8, Being the record title owners, Addition, consists of 3 blocks. Said blocks are dedicated for perpetual use as the south half of 5TH STREET, which is 50 FEET WIDE, and the north 33 FEET of 5TH STREET, which is 50 FEET WIDE, by the City, is hereby re-dedicated to the City of Fremont, Nebraska. The North 33 feet of 5TH STREET is also confirmed. We herewith dedicate to the City of Fremont, Nebraska, the RUWE PARK. We hereby grant to the City of Fremont, Nebraska, across the rear Ten Feet of all lots in Block 2, the right of way for a public street. By affixing our signatures hereunto, and the seal of said Corporation and its seal is hereby confirmed.

Albert J. Ruwe
ALBERT J. RUWE, a single person

STATE OF NEBRASKA)
COUNTY OF DODGE)^{SS}

On this 27th day of May, 1911,
I, Albert J. Ruwe, a single person, and Alfred W. Christensen,
affixed hereto as grantors, do hereby certify that the above is a true and correct copy of the original of said Corporation.

My Commission expires Oct 1, 1911

I hereby certify that I am a Rec-
Fremont, Nebraska. I further state that the above is true and in accordance with an actual survey.

On this 31st day of May, 1911,
City Council on the above date

Dwight A. Holt
MAYOR

SE CORNER OF WEST 1/2 OF SE 1/4 - NE 1/4 SECTION 24-17-8

ADDITION

NEBRASKA

100'

WEST CORNER OF WEST 1/2 OF SE 1/4 - NE 1/4 SECTION 24 - 17 - 8

DEDICATION

KNOW ALL MEN BY THESE PRESENTS: That ALBERT J. RUWE, a single person, and PARKSIDE CORPORATION are the owners of the West 1/2 of the SE 1/4 of the NE 1/4 and the West 25 feet of the E 1/2 of the SE 1/4 of NE 1/4 of Sec 24, Township 17 North, Range 8 East of the 6th P.M. Being the record title owners, we herewith subdivide and plat said tract as RUWE'S ADDITION to the City of Fremont, Nebraska. This Addition consists of 3 blocks. Said blocks are subdivided into lots with their number and dimensions shown on this plat. We dedicate for perpetual use by the public; 4TH STREET and GARDEN CITY ROAD, which are each 50 feet in width; the North 33 feet of said tract as the south half of 5TH STREET and the South 33 feet of said tract as the north half of 1ST STREET. THIRD STREET, which is 50 feet in width, previously dedicated by virtue of plats 288, 296 and 300 but which has never been accepted by the City, is hereby re-dedicated to the City of Fremont for perpetual use by the public. The North 33 feet of 5TH STREET has also been dedicated to the public by its public use and County road records and its public dedication is also confirmed.

We herewith dedicate to the City of Fremont, Lot 9, BLOCK 1, for perpetual use as a public park and recreational area to be known as RUWE PARK. We hereby grant to the City of Fremont, any public or private utility company and for reciprocal use by abutting property owners, an easement across the rear Ten Feet of all lots in this Addition for the sole purpose of constructing and maintaining utility lines and pipes. By affixing our signatures hereto, we acknowledge this dedication and platting to be our voluntary act and deed and the deed of the above named Corporation and its seal is hereby affixed by its authorities.

Albert J. Ruwe
ALBERT J. RUWE, a single person

Alfred Christensen
ALFRED CHRISTENSEN, president of Parkside Corporation

David L. Christensen
Attest: DAVID L. CHRISTENSEN Secretary

NOTARY

STATE OF NEBRASKA)
COUNTY OF DODGE) SS

On this 27th day of May, 1961, before me, a Notary Public in and for said County, personally came ALBERT J. RUWE, a single person, and ALFRED CHRISTENSEN, President of Parkside Corporation, to me personally known to be the identical persons whose names are affixed hereto as grantors, do hereby acknowledge this dedication and platting to be their voluntary act and deed and the voluntary act and deed of said Corporation.

My Commission expires Oct 1, 1965

Bernard T. Schumann
NOTARY

SURVEYOR'S CERTIFICATE

I hereby certify that I am a Registered Land Surveyor and that I personally supervised the survey and platting of RUWE'S ADDITION to Fremont, Nebraska. I further state that gaspips were driven at all lot and block corners in this addition; that all measurements as shown on this plat are true and in accordance with an actual survey made under my supervision.

Jacob W. Pasch
Registered Land Surveyor

APPROVAL

On this 31st day of May, 1961, this plat is approved by the undersigned, Mayor and City Clerk, as instructed by a resolution passed by the City Council on the above date.

Dwight A. Hollins
MAYOR

Frank C. Chesman
CITY CLERK

WEST CORNER OF WEST 1/2 OF SE 1/4 - NE 1/4 SECTION 24 - 17 - 8

SEARCHED INDEXED
SERIALIZED FILED
JUN 8 1961
FREMONT, NEB.
Kitty A. Roush
Bernard T. Schumann