

THE RIDGES REPLAT II

S 1/4 CORNER
SEC. 28-15-11

U.S. HIGHWAY NO. 275

SEC. COR.
28-15-11

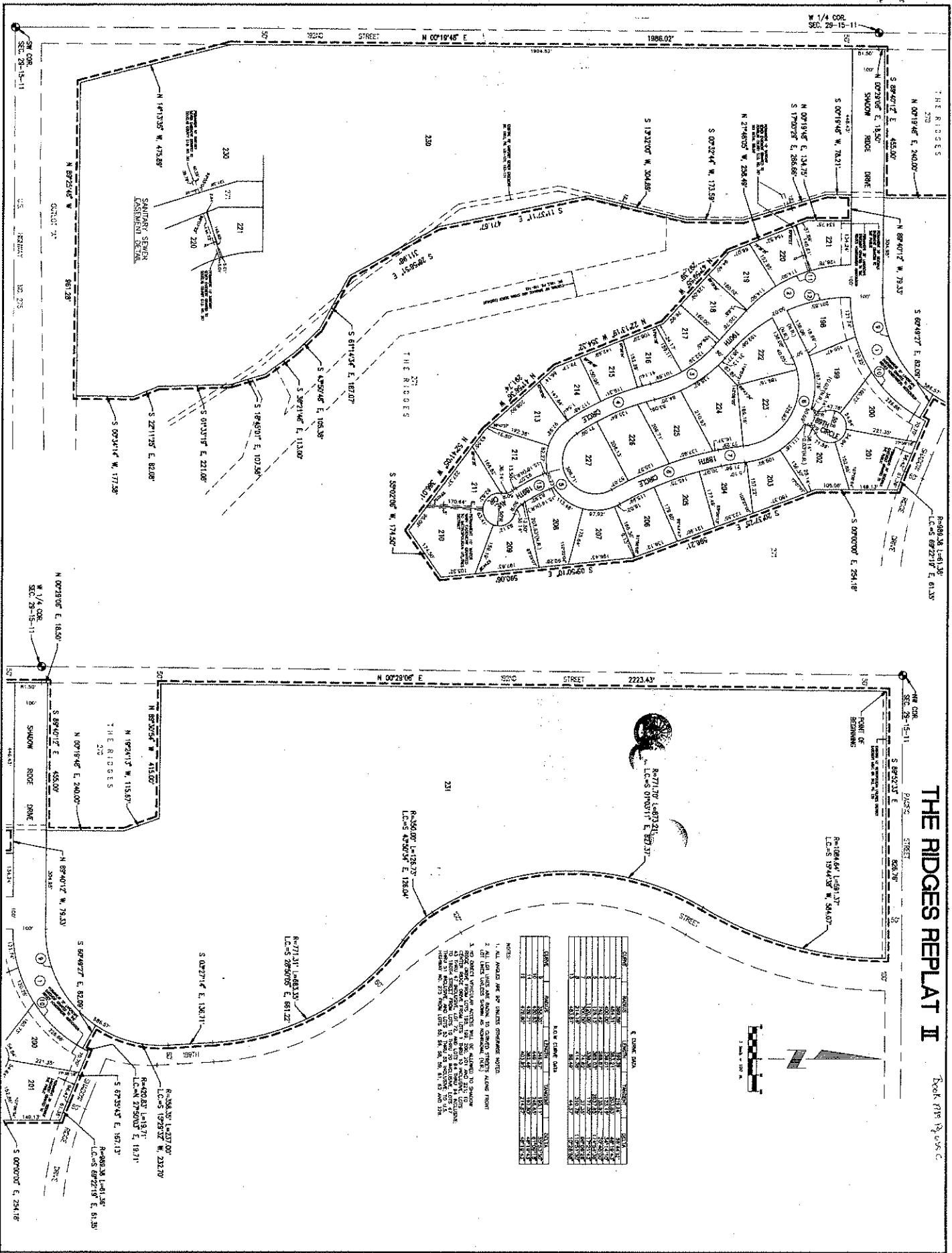
850614	11-20-20
17-100	191
275	189

FINAL PLAT

THE RIDGES REPLAT II
OMAHA, NEBRASKA

ELLIOTT & ASSOCIATES
5310 SOUTH 132ND STREET • OMAHA, NE 68137 • (402)885-4700





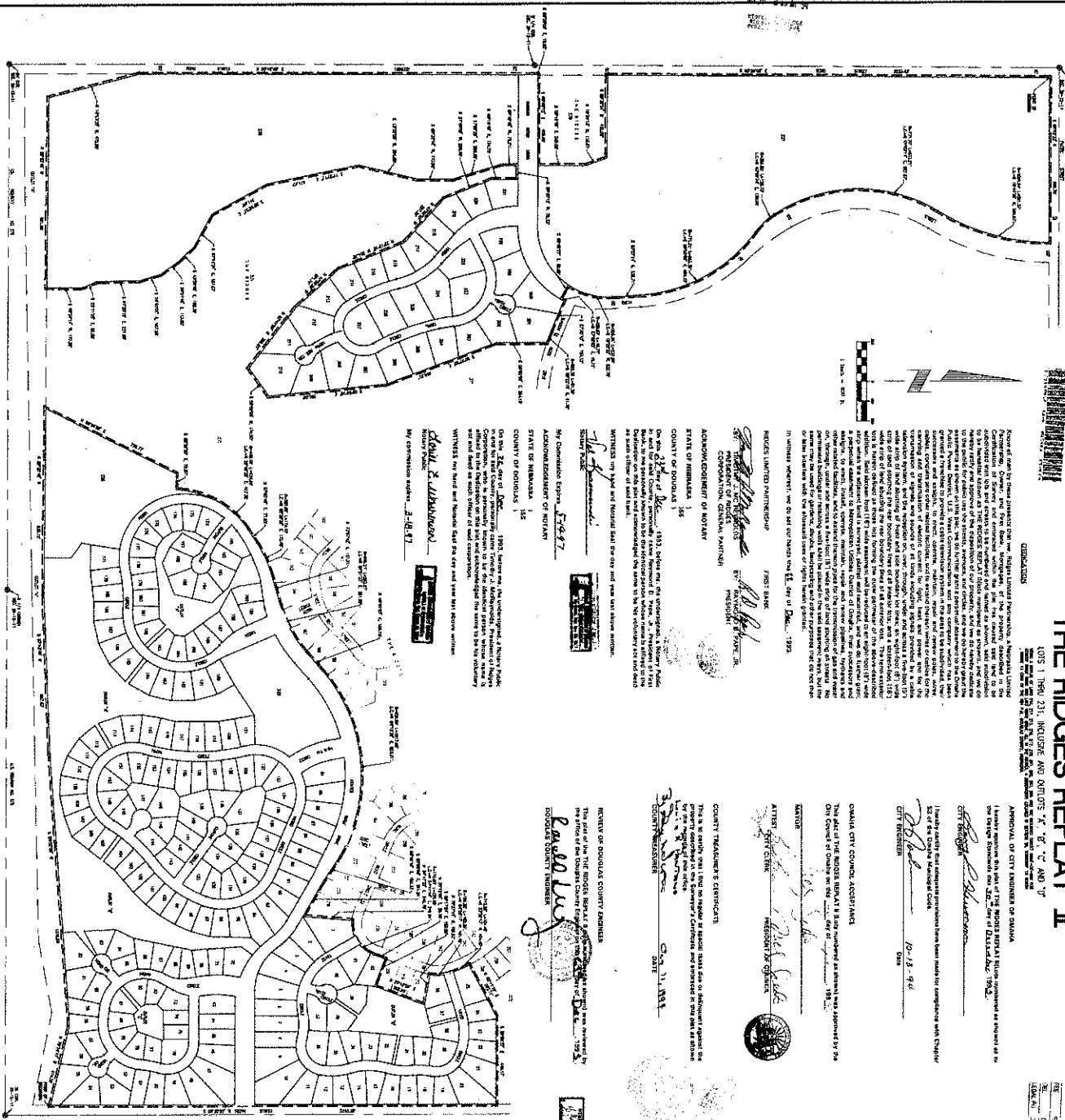
THE RIDGES REPLAT II
Book 111, Page 2

NOTE:

1. ALL MEASUREMENTS ARE PER THE LATEST MEASUREMENT NOTES.
2. ALL LOTS ARE TO BE CONVEYED FROM THE CENTER OF THE STREET TO THE CENTER OF THE LOT.
3. NO DIRECT MEASUREMENT ACCESS SHALL BE ALLOWED TO ADJACENT LOTS.
4. CENTER POINTS OF CURVED LINES TO BE LOCATED BY THE SURVEYOR.
5. ALL LOTS ARE TO BE CONVEYED TO THE CENTER OF THE STREET TO THE CENTER OF THE LOT.
6. THE SURVEYOR SHALL BE RESPONSIBLE FOR OBTAINING ALL NECESSARY RECORDS AND RECORDING THIS PLAT.
7. THE SURVEYOR SHALL BE RESPONSIBLE FOR OBTAINING ALL NECESSARY RECORDS AND RECORDING THIS PLAT.

STATION	BEARING	DISTANCE	STATION	BEARING	DISTANCE
1	N 00°18'46" E	423.00'	10	S 89°40'12" W	78.33'
2	N 00°18'46" E	240.00'	11	S 89°40'12" W	78.33'
3	N 00°18'46" E	423.00'	12	S 89°40'12" W	78.33'
4	N 00°18'46" E	240.00'	13	S 89°40'12" W	78.33'
5	N 00°18'46" E	423.00'	14	S 89°40'12" W	78.33'
6	N 00°18'46" E	240.00'	15	S 89°40'12" W	78.33'
7	N 00°18'46" E	423.00'	16	S 89°40'12" W	78.33'
8	N 00°18'46" E	240.00'	17	S 89°40'12" W	78.33'
9	N 00°18'46" E	423.00'	18	S 89°40'12" W	78.33'
10	N 00°18'46" E	240.00'	19	S 89°40'12" W	78.33'
11	N 00°18'46" E	423.00'	20	S 89°40'12" W	78.33'
12	N 00°18'46" E	240.00'	21	S 89°40'12" W	78.33'
13	N 00°18'46" E	423.00'	22	S 89°40'12" W	78.33'
14	N 00°18'46" E	240.00'	23	S 89°40'12" W	78.33'
15	N 00°18'46" E	423.00'	24	S 89°40'12" W	78.33'
16	N 00°18'46" E	240.00'	25	S 89°40'12" W	78.33'
17	N 00°18'46" E	423.00'	26	S 89°40'12" W	78.33'
18	N 00°18'46" E	240.00'	27	S 89°40'12" W	78.33'
19	N 00°18'46" E	423.00'	28	S 89°40'12" W	78.33'
20	N 00°18'46" E	240.00'	29	S 89°40'12" W	78.33'
21	N 00°18'46" E	423.00'	30	S 89°40'12" W	78.33'
22	N 00°18'46" E	240.00'	31	S 89°40'12" W	78.33'
23	N 00°18'46" E	423.00'	32	S 89°40'12" W	78.33'
24	N 00°18'46" E	240.00'	33	S 89°40'12" W	78.33'
25	N 00°18'46" E	423.00'	34	S 89°40'12" W	78.33'
26	N 00°18'46" E	240.00'	35	S 89°40'12" W	78.33'
27	N 00°18'46" E	423.00'	36	S 89°40'12" W	78.33'
28	N 00°18'46" E	240.00'	37	S 89°40'12" W	78.33'
29	N 00°18'46" E	423.00'	38	S 89°40'12" W	78.33'
30	N 00°18'46" E	240.00'	39	S 89°40'12" W	78.33'
31	N 00°18'46" E	423.00'	40	S 89°40'12" W	78.33'
32	N 00°18'46" E	240.00'	41	S 89°40'12" W	78.33'
33	N 00°18'46" E	423.00'	42	S 89°40'12" W	78.33'
34	N 00°18'46" E	240.00'	43	S 89°40'12" W	78.33'
35	N 00°18'46" E	423.00'	44	S 89°40'12" W	78.33'
36	N 00°18'46" E	240.00'	45	S 89°40'12" W	78.33'
37	N 00°18'46" E	423.00'	46	S 89°40'12" W	78.33'
38	N 00°18'46" E	240.00'	47	S 89°40'12" W	78.33'
39	N 00°18'46" E	423.00'	48	S 89°40'12" W	78.33'
40	N 00°18'46" E	240.00'	49	S 89°40'12" W	78.33'
41	N 00°18'46" E	423.00'	50	S 89°40'12" W	78.33'
42	N 00°18'46" E	240.00'	51	S 89°40'12" W	78.33'
43	N 00°18'46" E	423.00'	52	S 89°40'12" W	78.33'
44	N 00°18'46" E	240.00'	53	S 89°40'12" W	78.33'
45	N 00°18'46" E	423.00'	54	S 89°40'12" W	78.33'
46	N 00°18'46" E	240.00'	55	S 89°40'12" W	78.33'
47	N 00°18'46" E	423.00'	56	S 89°40'12" W	78.33'
48	N 00°18'46" E	240.00'	57	S 89°40'12" W	78.33'
49	N 00°18'46" E	423.00'	58	S 89°40'12" W	78.33'
50	N 00°18'46" E	240.00'	59	S 89°40'12" W	78.33'
51	N 00°18'46" E	423.00'	60	S 89°40'12" W	78.33'
52	N 00°18'46" E	240.00'	61	S 89°40'12" W	78.33'
53	N 00°18'46" E	423.00'	62	S 89°40'12" W	78.33'
54	N 00°18'46" E	240.00'	63	S 89°40'12" W	78.33'
55	N 00°18'46" E	423.00'	64	S 89°40'12" W	78.33'
56	N 00°18'46" E	240.00'	65	S 89°40'12" W	78.33'
57	N 00°18'46" E	423.00'	66	S 89°40'12" W	78.33'
58	N 00°18'46" E	240.00'	67	S 89°40'12" W	78.33'
59	N 00°18'46" E	423.00'	68	S 89°40'12" W	78.33'
60	N 00°18'46" E	240.00'	69	S 89°40'12" W	78.33'
61	N 00°18'46" E	423.00'	70	S 89°40'12" W	78.33'
62	N 00°18'46" E	240.00'	71	S 89°40'12" W	78.33'
63	N 00°18'46" E	423.00'	72	S 89°40'12" W	78.33'
64	N 00°18'46" E	240.00'	73	S 89°40'12" W	78.33'
65	N 00°18'46" E	423.00'	74	S 89°40'12" W	78.33'
66	N 00°18'46" E	240.00'	75	S 89°40'12" W	78.33'
67	N 00°18'46" E	423.00'	76	S 89°40'12" W	78.33'
68	N 00°18'46" E	240.00'	77	S 89°40'12" W	78.33'
69	N 00°18'46" E	423.00'	78	S 89°40'12" W	78.33'
70	N 00°18'46" E	240.00'	79	S 89°40'12" W	78.33'
71	N 00°18'46" E	423.00'	80	S 89°40'12" W	78.33'
72	N 00°18'46" E	240.00'	81	S 89°40'12" W	78.33'
73	N 00°18'46" E	423.00'	82	S 89°40'12" W	78.33'
74	N 00°18'46" E	240.00'	83	S 89°40'12" W	78.33'
75	N 00°18'46" E	423.00'	84	S 89°40'12" W	78.33'
76	N 00°18'46" E	240.00'	85	S 89°40'12" W	78.33'
77	N 00°18'46" E	423.00'	86	S 89°40'12" W	78.33'
78	N 00°18'46" E	240.00'	87	S 89°40'12" W	78.33'
79	N 00°18'46" E	423.00'	88	S 89°40'12" W	78.33'
80	N 00°18'46" E	240.00'	89	S 89°40'12" W	78.33'
81	N 00°18'46" E	423.00'	90	S 89°40'12" W	78.33'
82	N 00°18'46" E	240.00'	91	S 89°40'12" W	78.33'
83	N 00°18'46" E	423.00'	92	S 89°40'12" W	78.33'
84	N 00°18'46" E	240.00'	93	S 89°40'12" W	78.33'
85	N 00°18'46" E	423.00'	94	S 89°40'12" W	78.33'
86	N 00°18'46" E	240.00'	95	S 89°40'12" W	78.33'
87	N 00°18'46" E	423.00'	96	S 89°40'12" W	78.33'
88	N 00°18'46" E	240.00'	97	S 89°40'12" W	78.33'
89	N 00°18'46" E	423.00'	98	S 89°40'12" W	78.33'
90	N 00°18'46" E	240.00'	99	S 89°40'12" W	78.33'
91	N 00°18'46" E	423.00'	100	S 89°40'12" W	78.33'
92	N 00°18'46" E	240.00'	101	S 89°40'12" W	78.33'
93	N 00°18'46" E	423.00'	102	S 89°40'12" W	78.33'
94	N 00°18'46" E	240.00'	103	S 89°40'12" W	78.33'
95	N 00°18'46" E	423.00'	104	S 89°40'12" W	78.33'
96	N 00°18'46" E	240.00'	105	S 89°40'12" W	78.33'
97	N 00°18'46" E	423.00'	106	S 89°40'12" W	78.33'
98	N 00°18'46" E	240.00'	107	S 89°40'12" W	78.33'
99	N 00°18'46" E	423.00'	108	S 89°40'12" W	78.33'
100	N 00°18'46" E	240.00'	109	S 89°40'12" W	78.33'
101	N 00°18'46" E	423.00'	110	S 89°40'12" W	78.33'
102	N 00°18'46" E	240.00'	111	S 89°40'12" W	78.33'
103	N 00°18'46" E	423.00'	112	S 89°40'12" W	78.33'
104	N 00°18'46" E	240.00'	113	S 89°40'12" W	78.33'
105	N 00°18'46" E	423.00'	114	S 89°40'12" W	78.33'
106	N 00°18'46" E	240.00'	115	S 89°40'12" W	78.33'
107	N 00°18'46" E	423.00'	116	S 89°40'12" W	78.33'
108	N 00°18'46" E	240.00'	117	S 89°40'12" W	78.33'
109	N 00°18'46" E	423.00'	118	S 89°40'12" W	78.33'
110	N 00°18'46" E	240.00'	119	S 89°40'12" W	78.33'
111	N 00°18'46" E	423.00'	120	S 89°40'12" W	78.33'
112	N 00°18'46" E	240.00'	121	S 89°40'12" W	78.33'
113	N 00°18'46" E	423.00'	122	S 89°40'12" W	78.33'
114	N 00°18'46" E	240.00'	123	S 89°40'12" W	78.33'
115	N 00°18'46" E	423.00'	124	S 89°40'12" W	78.33'
116	N 00°18'46" E	240.00'	125	S 89°40'12" W	78.33'
117	N 00°18'46" E	423.00'	126	S 89°40'12" W	78.33'
118	N 00°18'46" E	240.00'	127	S 89°40'12" W	78.33'
119	N 00°18'46" E	423.00'	128	S 89°40'12" W	78.33'
120	N 00°18'46" E	240.00'	129	S 89°40'12" W	78.33'
121	N 00°18'46" E	423.00'	130	S 89°40'12" W	78.33'
122	N 00°18'46" E	240.00'	131	S 89°40'12" W	78.33'
123	N 00°18'46" E	423.00'	132	S 89°40'12" W	78.33'
124	N 00°18'46" E	240.00'	133	S 89°40'12" W	78.33'
125	N 00°18'46" E	423.00'	134	S 89°40'12" W	78.33'
126	N 00°18'46" E	240.00'	135	S 89°40'12" W	78.33'
127	N 00°18'46" E	423.00'	136	S 89°40'12" W	78.33'
128	N 00°18'46" E	240.00'	137	S 89°40'12" W	78.33'
129	N 00°18'46" E	423.00'	138	S 89°40'12" W	78.33'
130	N 00°18'46" E	240.00'	139	S 89°40'12" W	78.33'
131	N 00°18'46" E	423.00'	140	S 89°40'12" W	78.33'
132	N 00°18'46" E	240.00'	141	S 89°40'12" W	78.33'
133	N 00°18'46" E	423.00'	142	S 89°40'12" W	78.33'
134	N 00°18'46" E	240.00'	143	S 89°40'12" W	78.33'
135	N 00°18'46" E	423.00'	144	S 89°40'12" W	78.33'
136	N 00°18'46" E	240.00'	145	S 89°40'12" W	78.33'
137	N 00°18'46" E	423.00'	146	S 89°40'12" W	78.33'
138	N 00°18'46" E	240.00'	147	S 89°40'12" W	78.33'
139	N 00°18'46" E	423.00'	148	S 89°40'12" W	78.33'
140	N 00°18'46" E	240.00'	149	S 89°40'12" W	78.33'
141	N 00°18'46" E	423.00'	150	S 89°40'12" W	78.33'
142	N 00°18'46" E	240.00'	151	S 89°40'12" W	78.33'
143	N 00°18'46" E	423.00'	152	S 89°40'12" W	78.33'
144	N 00°18'46" E	240.00'	153	S 89°40'12" W	78.33'
145	N 00°18'46" E	423.00'	154	S 89°40'12" W	78.33'
146	N 00°18'46" E	240.00'	155	S 89°40'12" W	78.33'
147	N 00°18'46" E	423.00'	156	S 89°40'12" W	78

RECORDED
PLAT 1188-21



THE RIDGES REPLAT II

PLAT 1188-21, AMENDMENT AND OCTOBER 14, 1974, MAP 17
THE RIDGES REPLAT II, AMENDMENT AND OCTOBER 14, 1974, MAP 17
THE RIDGES REPLAT II, AMENDMENT AND OCTOBER 14, 1974, MAP 17

Know all men by these presents that we, **Ridges United Partnership**, a Nebraska Limited Partnership, and **James E. Dill**, its General Partner, do hereby certify that the following is a true and correct copy of the original plat and map of the Ridges Replat II, as amended, as shown and contained within the plat hereinafter set forth. We do hereby certify that the original plat and map of the Ridges Replat II, as amended, are on file in the office of the County Clerk of Omaha, Nebraska, and that the same are available for public inspection and copying at all reasonable times. We do hereby certify that the original plat and map of the Ridges Replat II, as amended, are on file in the office of the County Clerk of Omaha, Nebraska, and that the same are available for public inspection and copying at all reasonable times. We do hereby certify that the original plat and map of the Ridges Replat II, as amended, are on file in the office of the County Clerk of Omaha, Nebraska, and that the same are available for public inspection and copying at all reasonable times.

RIDGES UNITED PARTNERSHIP
FIRST BANK
ATTORNEY AT LAW
CORPORATION, GENERAL PARTNER

STATE OF NEBRASKA
COUNTY OF DOUGLAS

Witness my hand and official seal this 14th day of October, 1974.

James E. Dill
General Partner

Don & Libby
Plat Surveyors

APPROVAL OF CITY ENGINEER OF OMAHA
I hereby approve this plat of THE RIDGES REPLAT II, as amended, as shown and contained within the plat hereinafter set forth, and as the same conform to the provisions of the City Ordinance of Omaha, Nebraska, relating to the replating of land.

City Engineer
10-13-74

OMAHA CITY COUNCIL APPROVAL
This plat of THE RIDGES REPLAT II, as amended, as shown and contained within the plat hereinafter set forth, is approved by the City Council of Omaha, Nebraska, on this 13th day of October, 1974.

City Council
10-13-74

ATTORNEY AT LAW
10-13-74

COUNTY TREASURER'S CERTIFICATE
This plat of THE RIDGES REPLAT II, as amended, as shown and contained within the plat hereinafter set forth, is approved by the County Clerk of Douglas County, Nebraska, on this 13th day of October, 1974.

County Clerk
10-13-74

RECORD OF DOUGLAS COUNTY ENGINEER
This plat of THE RIDGES REPLAT II, as amended, as shown and contained within the plat hereinafter set forth, is approved by the County Engineer of Douglas County, Nebraska, on this 13th day of October, 1974.

County Engineer
10-13-74

1188-21, MAP 17, THE RIDGES REPLAT II, AMENDMENT AND OCTOBER 14, 1974, MAP 17. This plat shows the original plat and map of the Ridges Replat II, as amended, as shown and contained within the plat hereinafter set forth. The original plat and map of the Ridges Replat II, as amended, are on file in the office of the County Clerk of Omaha, Nebraska, and that the same are available for public inspection and copying at all reasonable times. The original plat and map of the Ridges Replat II, as amended, are on file in the office of the County Clerk of Omaha, Nebraska, and that the same are available for public inspection and copying at all reasonable times. The original plat and map of the Ridges Replat II, as amended, are on file in the office of the County Clerk of Omaha, Nebraska, and that the same are available for public inspection and copying at all reasonable times.